

| | | |
|-------------|----------|-------------|
| APP CRS | Rwy Ldg | 4997 |
| 076° | TDZE | 24 |
| | Apt Elev | 26 |

RNAV (GPS) RWY 8

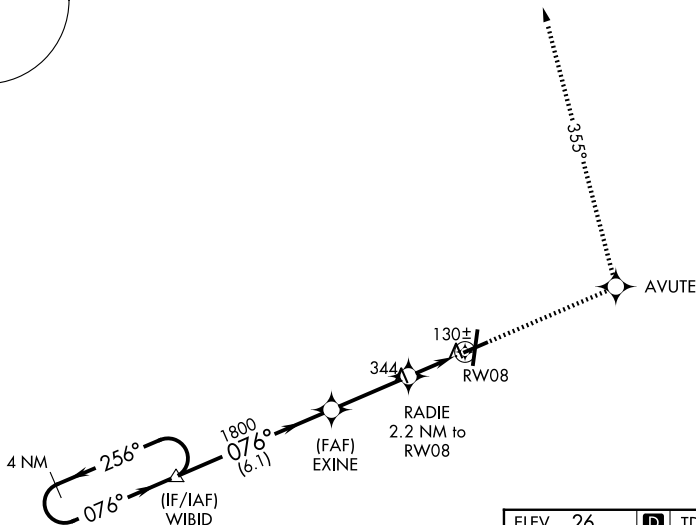
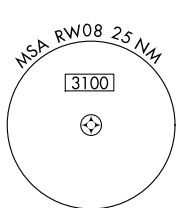
PITT-GREENVILLE (PGV)

RNP APCH - GPS.

⚠ Rwy 8 helicopter visibility reduction below $\frac{3}{4}$ SM NA. When local altimeter setting not received use Washington altimeter setting and increase all MDAs 60 feet, LNAV visibility Cat C and D $\frac{1}{2}$ SM and Circling visibility Cat D $\frac{1}{4}$ SM.

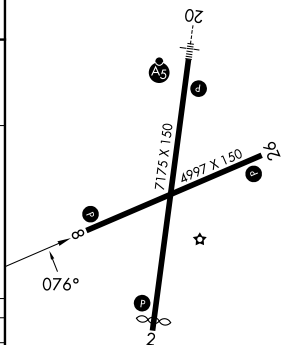
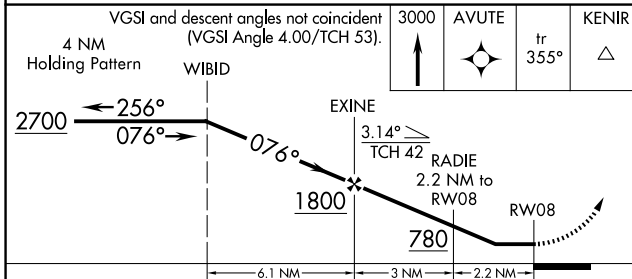
MISSED APPROACH: Climb to 3000 direct AVUTE and via 355° track to KENIR and hold.

| | | |
|--------------------------|---|---------------------------------|
| AWOS-3 128.425 | WASHINGTON CENTER 123.85 279.65 | UNICOM 122.8 (CTAF) 0 |
|--------------------------|---|---------------------------------|



NoPT for arrivals on V157 southbound.

| | |
|---------|------------------|
| ELEV 26 | D TDZE 24 |
|---------|------------------|



| CATEGORY | A | B | C | D |
|----------|----------------------|----------------------|----------------------|---|
| LNAV MDA | 500-1 | 476 (500-1) | 500-1 $\frac{3}{8}$ | 476 (500-1 $\frac{3}{8}$) |
| CIRCLING | 600-1 574 (600-1) | 620-1 594 (600-1) | 700-2 674 (700-2) | 800-2 $\frac{1}{2}$ 774 (800-2 $\frac{1}{2}$) |

HIRL Rwy 2-20 **0**
MIRL Rwy 8-26 **0**
REIL Rws 2, 8, and 26

SE-2, 16 APR 2026 to 14 MAY 2026

SE-2, 16 APR 2026 to 14 MAY 2026