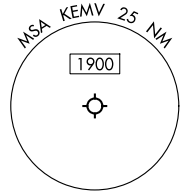


LOC/DME I-EMV <b>108.75</b> Chan <b>24(Y)</b>	APP CRS <b>335°</b>	Rwy Ldg TDZE <b>122</b> Apt Elev <b>127</b>
---	------------------------	---

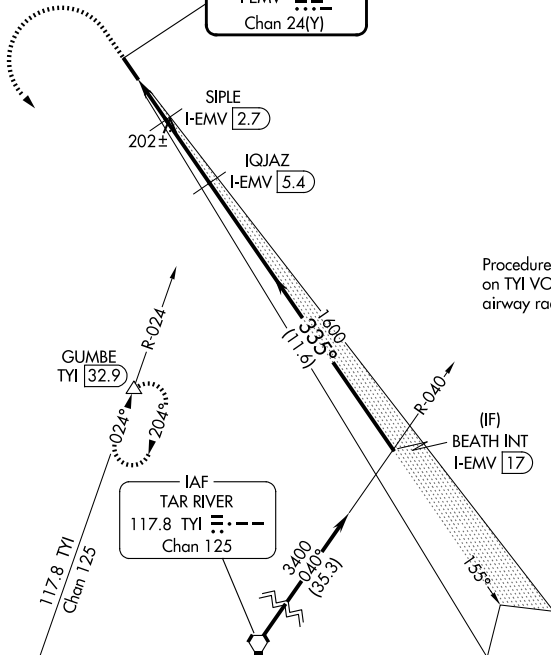
# LOC RWY 34

EMPORIA-GREENSVILLE RGNL (EMV)

DME required.		MISSED APPROACH: Climb to 600 then climbing left turn to 3000 on heading 160° and TY1 VORTAC R-024 to GUMBE/TY1 32.9 DME and hold, continue climb-in-hold to 3000.
AWOS-3 <b>124.175</b>	WASHINGTON CENTER <b>132.025 290.425</b>	UNICOM <b>123.0 (CTAF) 0</b>



LOCALIZER 108.75  
I-EMV  
Chan 24(Y)

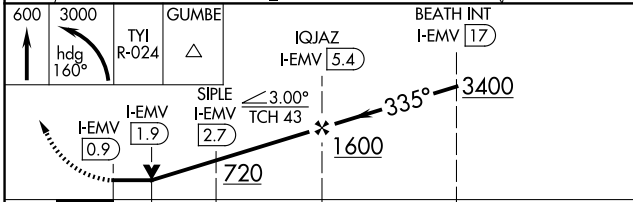
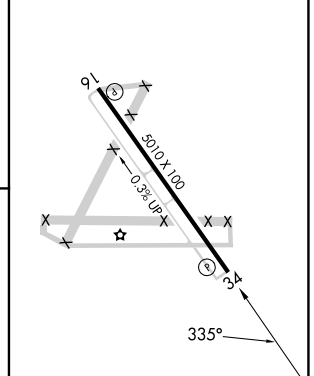


Procedure NA for arrival on TY1 VORTAC airway radials 024 CW 082.

NE-3, 16 APR 2026 to 14 MAY 2026

NE-3, 16 APR 2026 to 14 MAY 2026

ELEV 127	TDZE 122
----------	----------



REIL Rwy 16 and 34	0
MIRL Rwy 16-34	0
FAF to MAP 4.6 NM	
Knots	60 90 120 150 180
Min:Sec	4:36 3:04 2:18 1:50 1:32

CATEGORY	A	B	C	D
S-LOC 34	480-1	358 (400-1)	680-1½	NA
CIRCLING	580-1	453 (500-1)	553 (600-1½)	NA