

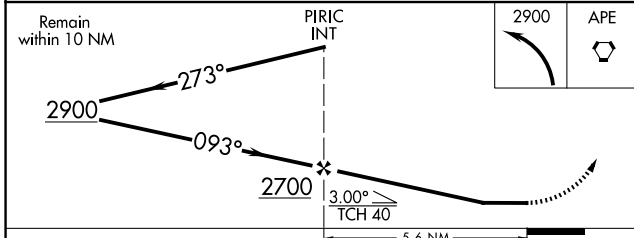
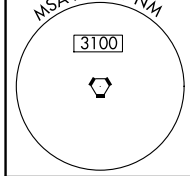
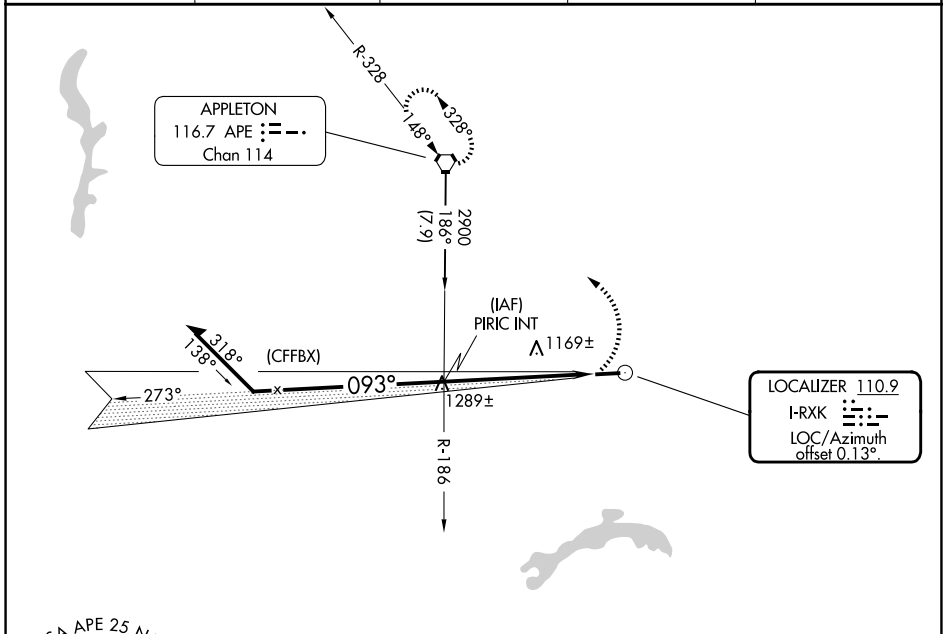
LOC I-RXK <b>110.9</b>	APP CRS <b>093°</b>	Rwy Ldg TDZE Apt Elev	<b>4192</b> <b>884</b> <b>884</b>
---------------------------	------------------------	-----------------------------	---

# LOC RWY 9

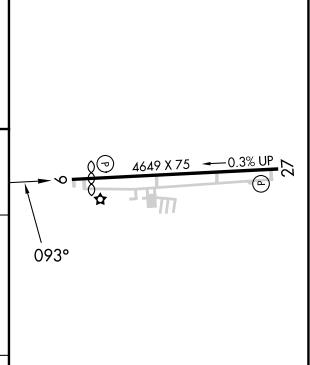
LICKING COUNTY RGNL (VTA)

**▼** Rwy 9 helicopter visibility reduction below 1 SM NA. Straight-in and Circling Rwy 9 NA at night.  
**▲ NA** MISSED APPROACH: Climbing left turn to 2900 direct APE VORTAC and hold.

ASOS <b>121.125</b>	COLUMBUS APP CON <b>125.95 317.775</b>	CLNC DEL <b>125.175</b>	UNICOM <b>122.7</b> (CTAF)	<b>123.3</b> <b>0</b>
------------------------	---	----------------------------	-------------------------------	-----------------------



ELEV 884	TDZE 884
----------	----------



CATEGORY	A	B	C	D
S-9	1420-1	536 (600-1)	1420-1½	536 (600-1½)
CIRCLING	1480-1	596 (600-1)	1760-2½ 876 (900-2½)	1760-2¾ 876 (900-2¾)

MIRL Rwy 9-27 <b>0</b>	
REIL Rwy 9 and 27 <b>0</b>	
FAF to MAP 5.6 NM	
Knots	60 90 120 150 180
Min:Sec	5:36 3:44 2:48 2:14 1:52

EC-2, 16 APR 2026 to 14 MAY 2026

EC-2, 16 APR 2026 to 14 MAY 2026