

WAAS CH <b>53606</b> <b>W36A</b>	APP CRS <b>357°</b>	Rwy Ldg TDZE Apt Elev	<b>5500</b> <b>1245</b> <b>1245</b>
--	------------------------	-----------------------------	---

# RNAV (GPS) RWY 36

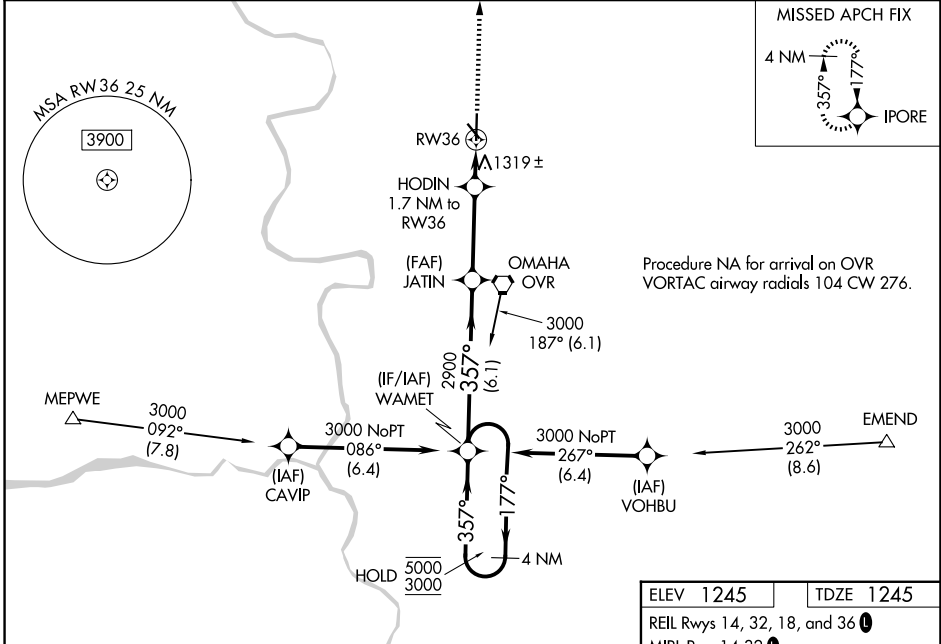
COUNCIL BLUFFS MUNI (CBF)

RNP APCH.

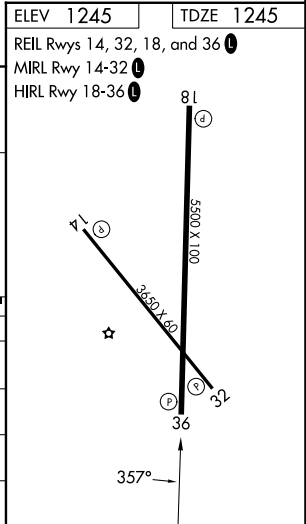
Baro-VNAV and VDP NA when using Eppley Airfield altimeter setting. For uncompensated Baro-VNAV systems, LNAV/VNAV NA below -17°C or above 54°C. When local altimeter setting not received, use Eppley Airfield altimeter setting and increase LPV DA to 1498 feet, LNAV/VNAV DA to 1548 feet, and all MDA 60 feet and increase LNAV/VNAV all Cats visibility 1/2 SM, LNAV Cat C and D visibility 1/4 SM, and Circling Cat C and D visibility 1/4 SM.

MISSED APPROACH: Climb to 3000 direct IPORE and hold.

AWOS-3 <b>126.575</b>	OMAHA APP CON <b>124.5 263.0</b>	UNICOM <b>122.725 (CTAF)</b>
--------------------------	-------------------------------------	---------------------------------



4 NM Holding Pattern	5000 ← 177°	3000 → 357°	357°	2900	*1820	3000 IPORE
	GP 3.00° TCH 50	6.1 NM	3.4 NM	0.8 NM	0.9 NM	*0.9 NM to RW36
CATEGORY	A	B	C	D		
LPV DA		1445-3/4	200 (200-3/4)			
LNAV/VNAV DA		1495-3/4	250 (300-3/4)			
LNAV MDA		1580-1	335 (400-1)			
CIRCLING	1780-1 535 (600-1)	1840-1 595 (600-1)	1840-1 1/2 595 (600-1 1/2)	1880-2 635 (700-2)		



NC-3, 16 APR 2026 to 14 MAY 2026

NC-3, 16 APR 2026 to 14 MAY 2026