

APP CRS	Rwy Ldg	<b>4352</b>
<b>225°</b>	TDZE	<b>289</b>
	Apt Elev	<b>290</b>

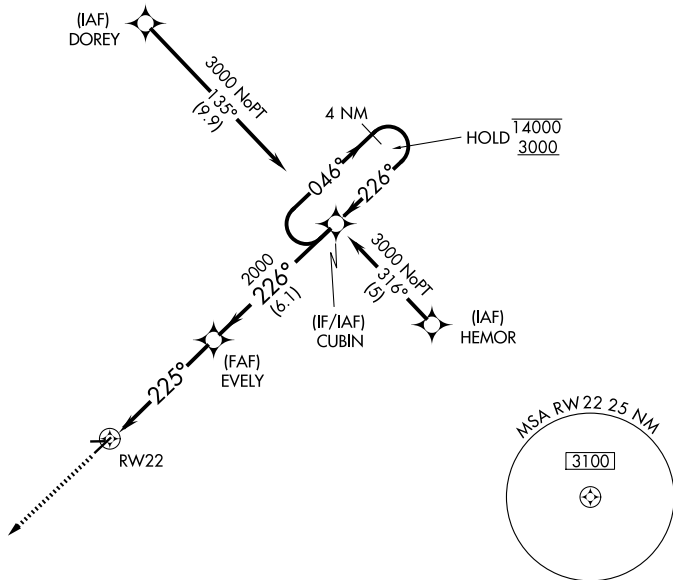
# RNAV (GPS) RWY 22

KIRK FLD (PGR)

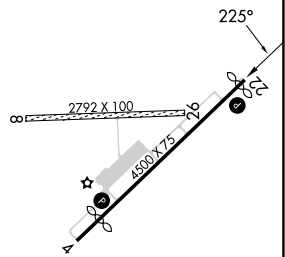
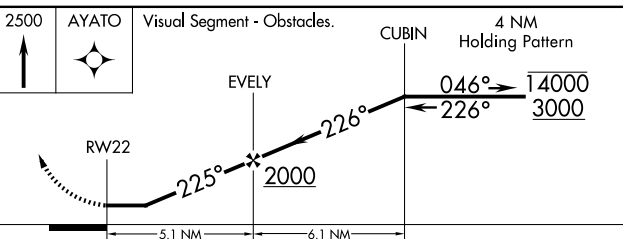
RNP APCH - GPS.  
 ⚠️ NA Circling NA to Rwy 8 and 26. Rwy 22 helicopter visibility reduction below 1/4 SM NA. Use Jonesboro altimeter setting; when not received, use Walnut Ridge altimeter setting and increase all MDA 20 feet.

MISSED APPROACH: Climb to 2500 direct AYATO and hold.

JBR ASOS <b>118.525</b>	MEMPHIS CENTER <b>120.075 289.4</b>	UNICOM <b>122.8 (CTAF) 0</b>
----------------------------	--	---------------------------------



ELEV 290	TDZE 289
----------	----------



CATEGORY	A	B	C	D
LNVA MDA	820-1 1/4	531 (600-1 1/4)	NA	
CIRCLING	860-1 1/4 570 (600-1 1/4)	1000-1 1/4 710 (800-1 1/4)	NA	

MIRL Rwy 4-22 0  
 REIL Rwy 4 and 22 0

SC-1, 16 APR 2026 to 14 MAY 2026

SC-1, 16 APR 2026 to 14 MAY 2026