

(KER4.KER) 24081
KERMIT FOUR DEPARTURE

AL-5551 (FAA)

MID-CAROLINA RGNL (RUQ)
 SALISBURY, NORTH CAROLINA

CHARLOTTE DEP CON
 128.325 307.8
 AWOS-3
 118.175
 CLNC DEL
 127.35
 UNICOM
 122.725

RADAR and DME required.

**TOP ALTITUDE:
 3000**

PULASKI
 116.8 PSK
 Chan 115

BARRETT'S MOUNTAIN
 113.75 BZM
 Chan 84(Y)

LIBERTY
 113.0 LB
 Chan 77

RALEIGH/DURHAM
 117.2 RDU
 Chan 119

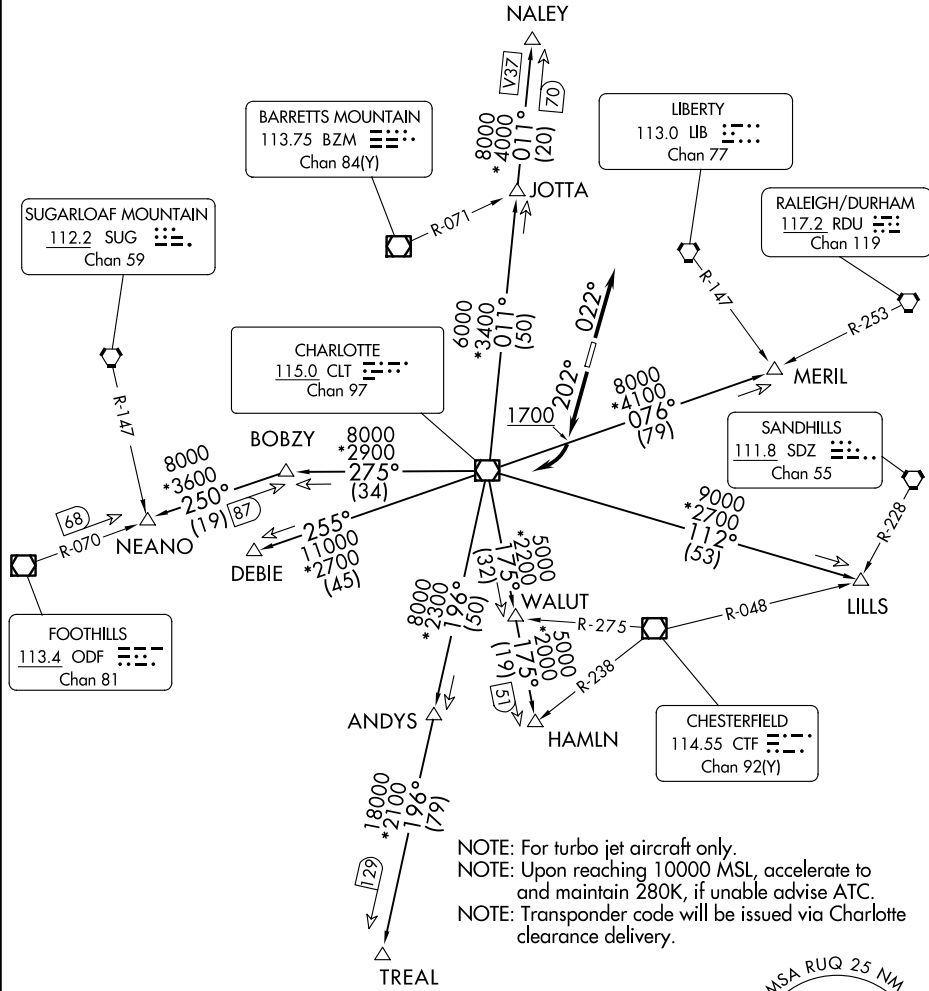
SUGARLOAF MOUNTAIN
 112.2 SUG
 Chan 59

CHARLOTTE
 115.0 CLT
 Chan 97

SANDHILLS
 111.8 SDZ
 Chan 55

FOOTHILLS
 113.4 ODF
 Chan 81

CHESTERFIELD
 114.55 CTF
 Chan 92(Y)



SE-2, 16 APR 2026 to 14 MAY 2026

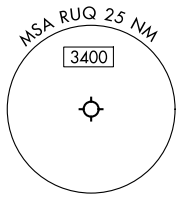
SE-2, 16 APR 2026 to 14 MAY 2026

TAKEOFF MINIMUMS

Rwy 2: Standard.
 Rwy 20: 400-2¾ or standard with minimum climb of 205' per NM to 1300, or alternatively, with standard takeoff minimums and a normal 200' per NM climb gradient, takeoff must occur no later than 1200' prior to DER.

NOTE: Chart not to scale.

(CONTINUED ON FOLLOWING PAGE)



KERMIT FOUR DEPARTURE
 (KER4.KER) 21MAR24

SALISBURY, NORTH CAROLINA
 MID-CAROLINA RGNL (RUQ)

KERMIT FOUR DEPARTURE



DEPARTURE ROUTE DESCRIPTION

TAKEOFF RUNWAY 2: Climb on heading 022°, thence

TAKEOFF RUNWAY 20: Climb on heading 202° to 1700 before turning right, thence

. . . . on RADAR vectors to intercept filed/assigned transition or enroute fix/navaid.
Maintain 3000, expect filed altitude/flight level 10 minutes after departure.

ANDYS TRANSITION (KER4.ANDYS): From over CLT VOR/DME on CLT R-196 to ANDYS.

DEBIE TRANSITION (KER4.DEBIE): From over CLT VOR/DME on CLT R-255 to DEBIE.

HAMLN TRANSITION (KER4.HAMLN): From over CLT VOR/DME on CLT R-175 to HAMLN.

JOTTA TRANSITION (KER4.JOTTA): From over CLT VOR/DME on CLT R-011 to JOTTA.

LILLS TRANSITION (KER4.LILLS): From over CLT VOR/DME on CLT R-112 to LILLS.

MERIL TRANSITION (KER4.MERIL): From over CLT VOR/DME on CLT R-076 to MERIL.

NALEY TRANSITION (KER4.NALEY): From over CLT VOR/DME on CLT R-011 to NALEY.

NEANO TRANSITION (KER4.NEANO): From over CLT VOR/DME on CLT R-275 to BOBZY,
then on ODF R-070 to NEANO.

TREAL TRANSITION (KER4.TREAL): From over CLT VOR/DME on CLT R-196 to TREAL.

SE-2, 16 APR 2026 to 14 MAY 2026

SE-2, 16 APR 2026 to 14 MAY 2026