

WAAS CH <b>9933Z</b> <b>W35A</b>	APP CRS <b>346°</b>	Rwy Ldg TDZE Apt Elev	<b>5318</b> <b>4729</b> <b>4734</b>
--	------------------------	-----------------------------	---

# RNAV (GPS) RWY 35

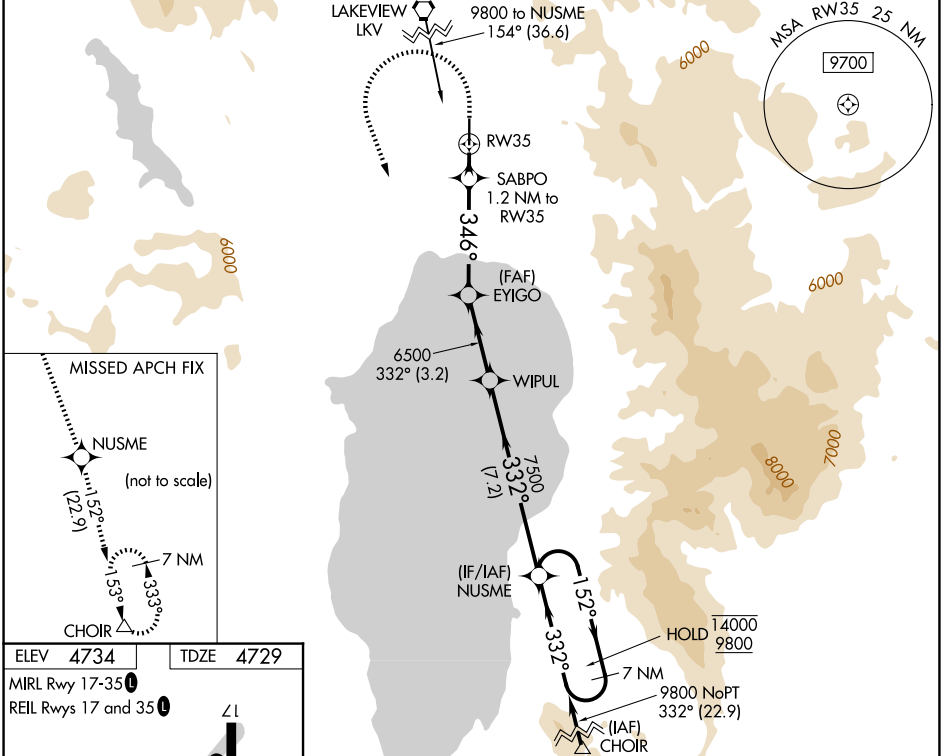
LAKE COUNTY (LKV)

RNP APCH. MISSED APPROACH: (Do not exceed 235K until NUSME) Climb to 5200 then climbing left turn to 11000 direct NUSME and on track 152° to CHOIR and hold.

**⚠** For uncompensated Baro-VNAV systems, LNAV/VNAV NA below -24°C or above 50°C. Circling NA east of Rwy 17-35.

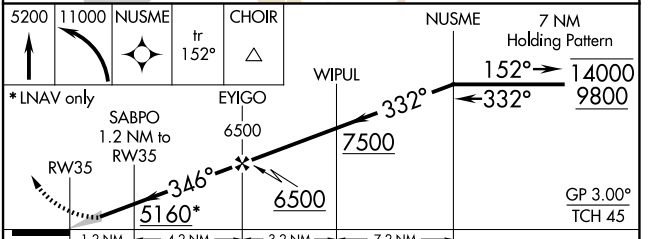
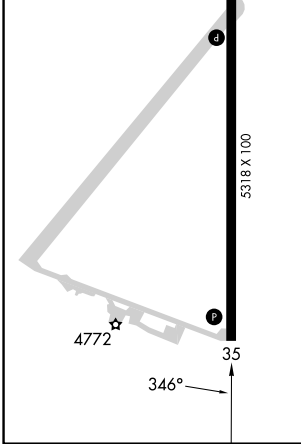
**⚠** -26°C

AWOS-3PT <b>135.525</b>	SEATTLE CENTER <b>127.6 346.35</b>	UNICOM <b>122.8 (CTAF) 0</b>
----------------------------	---------------------------------------	---------------------------------



ELEV <b>4734</b>	TDZE <b>4729</b>
------------------	------------------

MIRL Rwy 17-35 **0**  
REIL Rwys 17 and 35 **0**



5200	11000	NUSME	tr 152°	CHOIR	NUSME	7 NM Holding Pattern
* LNAV only		SABPO 1.2 NM to RW35	EYIGO 6500	WIPUL 7500	152° → 14000 9800	GP 3.00° TCH 45
1.2 NM	4.2 NM	3.2 NM	7.2 NM			
CATEGORY	A	B	C	D		
LPV DA	4979-1 250 (300-1)					
LNAV/ VNAV DA	5121-1½ 392 (400-1½)					
LNAV MDA	5080-1 351 (400-1)					
CIRCLING	5160-1 426 (500-1)	5220-1 486 (500-1)	5320-2 586 (600-2)	5480-2½ 746 (800-2½)		

NW-1, 16 APR 2026 to 14 MAY 2026

NW-1, 16 APR 2026 to 14 MAY 2026