

WAAS CH <b>82134</b> <b>W26A</b>	APP CRS <b>258°</b>	Rwy Ldg TDZE Apt Elev	<b>5000</b> <b>209</b> <b>239</b>
--	------------------------	-----------------------------	---

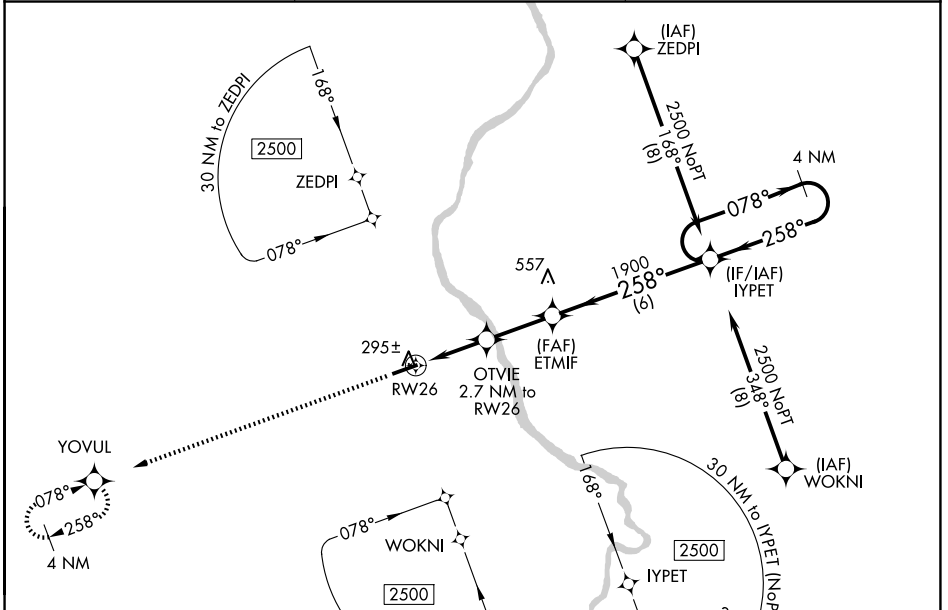
# RNAV (GPS) RWY 26

CHERAW MUNI/LYNCH BELLINGER FLD (CQW)

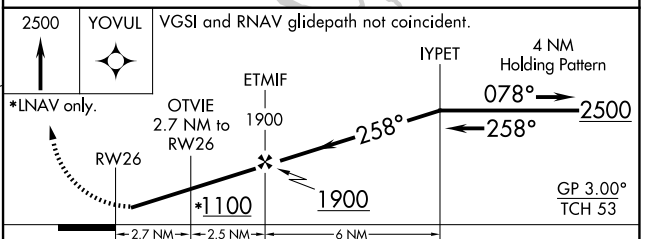
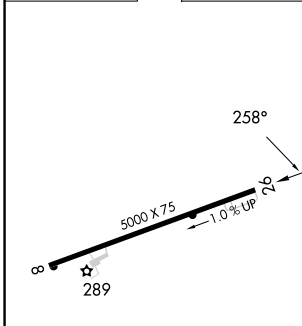
**▼** **▲** DME/DME RNP-0.3 NA. When local altimeter setting not received, use Darlington altimeter setting and increase all DA 44 feet, all MDA 60 feet, LNAV/VNAV all Cats visibility 1/8 mile, LNAV Cat C/D and Circling Cat C/D visibility 1/4 mile. Helicopter visibility reduction below 1 SM NA. For uncompensated Baro-VNAV systems, LNAV/VNAV NA below -15°C (5°F) or above 54°C (130°F). Procedure NA at night.

**MISSED APPROACH:**  
Climb to 2500 direct YOVUL and hold.

AWOS-3 <b>124.825</b>	FLORENCE APP CON * <b>118.6 341.7</b>	UNICOM <b>122.8 (CTAF) 0</b>
--------------------------	--	---------------------------------



ELEV 239	TDZE 209
----------	----------



CATEGORY	A	B	C	D
LPV DA		459-1	250 (300-1)	
LNAV/VNAV DA		578-1 1/4	369 (400-1 1/4)	
LNAV MDA		560-1	351 (400-1)	
CIRCLING	700-1	461 (500-1)	1060-2 1/2 821 (900-2 1/2)	1060-2 3/4 821 (900-2 3/4)

REIL Rwy 8 and 26 0  
MIRL Rwy 8-26 0

SE-2, 16 APR 2026 to 14 MAY 2026

SE-2, 16 APR 2026 to 14 MAY 2026