

MILLERSBURG, OHIO

AL-5561 (FAA)

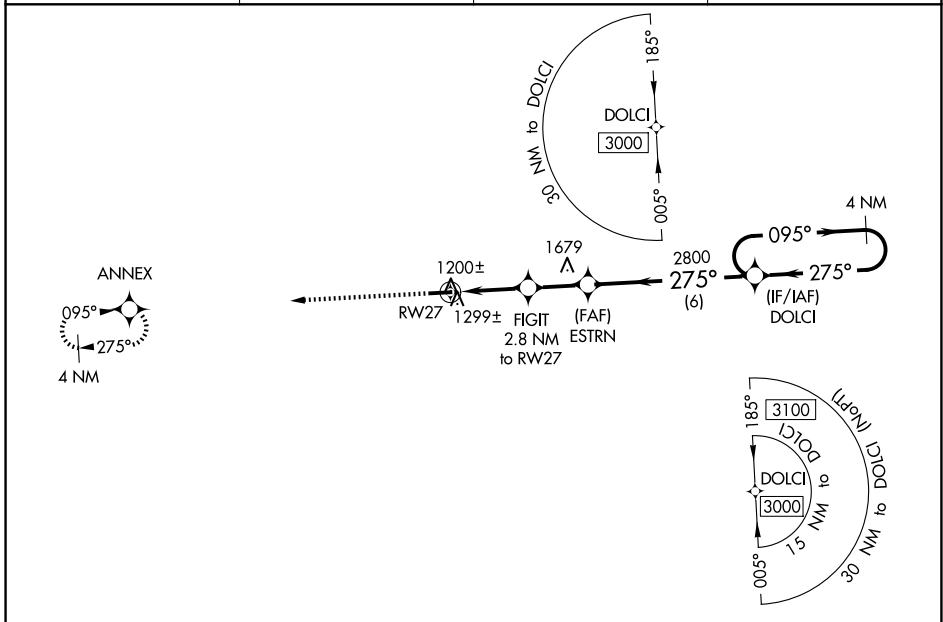
26078

|  |                        |   |
|--|------------------------|---|
| WAAS<br>CH <b>57937</b><br><b>W27A</b> | APP CRS<br><b>275°</b> | Rwy Ldg<br>TDZE <b>1215</b><br>Apt Elev <b>1227</b> |
|--|------------------------|---|

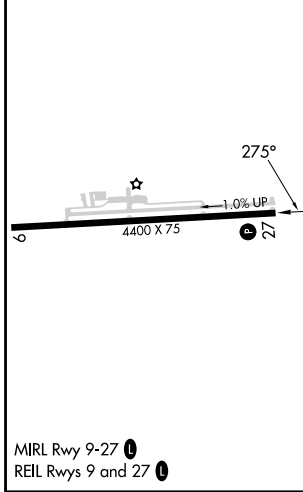
# RNAV (GPS) RWY 27

HOLMES COUNTY (10G)

|                          |  |                               |  |
|--------------------------|--|-------------------------------|--|
| RNP APCH - GPS.          |  |                               | MISSED APPROACH:<br>Climb to 3000 direct ANNEX and hold. |
| AWOS-3<br><b>128.325</b> | INDIANAPOLIS CENTER<br><b>124.45 323.275</b> | UNICOM<br><b>123.0 (CTAF)</b> |  |



|           |           |
|-----------|-----------|
| ELEV 1227 | TDZE 1215 |
|-----------|-----------|



|          |        |  |                         |                       |
|----------|--------|--|-------------------------|-----------------------|
| 3000     | ANNEX  | VGSIs and descent angles not coincident (VGSIs Angle 3.00/TCH 25). |                         | 4 NM Holding Pattern  |
| 3000     | ANNEX  | FIGIT 2.8 NM to RWY 27   | ESTRN                   | DOLCI                 |
| 2100     | 2800   | 0.9 NM to RWY 27   | 1.9 NM                  | 2.2 NM                |
| 275°     | 275°   | 0.9  | 1.9                     | 2.2                   |
| 3000     | 3000   | 4 NM Holding Pattern   |                         |                       |
| CATEGORY | A      | B  | C                       | D                     |
| LP MDA   | 1480-1 |  | 265 (300-1)             |                       |
| LNAV MDA | 1560-1 |  | 345 (400-1)             |                       |
| CIRCLING | 1760-1 | 533 (600-1)  | 1840-1¾<br>613 (700-1¾) | 1860-2<br>633 (700-2) |

MILLERSBURG, OHIO  
Orig-C 29DEC22

40°32'N-81°57'W

# HOLMES COUNTY (10G) RNAV (GPS) RWY 27

EC-2, 16 APR 2026 to 14 MAY 2026

EC-2, 16 APR 2026 to 14 MAY 2026