

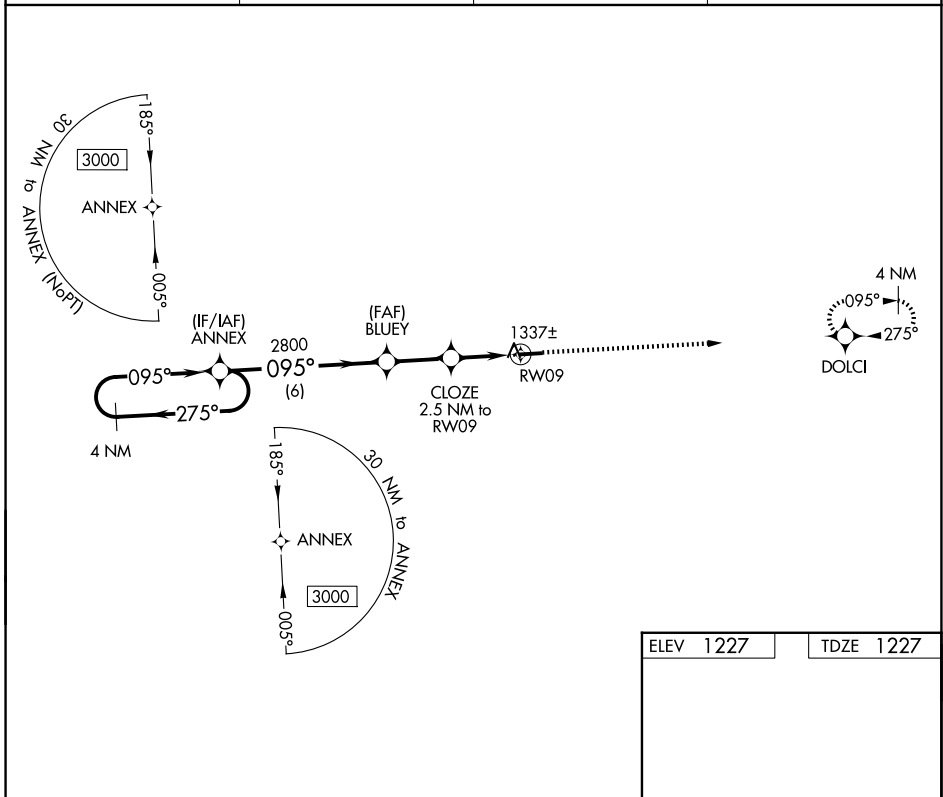
APP CRS	Rwy Ldg	4400
095°	TDZE	1227
	Apt Elev	1227

RNAV (GPS) RWY 9

HOLMES COUNTY (10G)

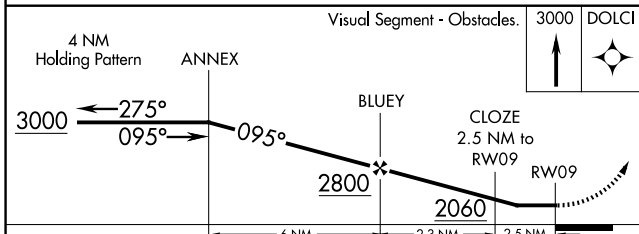
RNP APCH - GPS.	MISSED APPROACH: Climb to 3000 direct DOLCI and hold.
Rwy 9 helicopter visibility reduction below $\frac{3}{4}$ SM NA. When local altimeter setting not received, use Wayne County altimeter setting: increase all MDA 60 feet and visibility LNAV and Circling Cats C and D $\frac{1}{4}$ SM.	

AWOS-3 128.325	INDIANAPOLIS CENTER 124.45 323.275	UNICOM 123.0 (CTAF)	123.4 0
--------------------------	--	-------------------------------	-----------------------

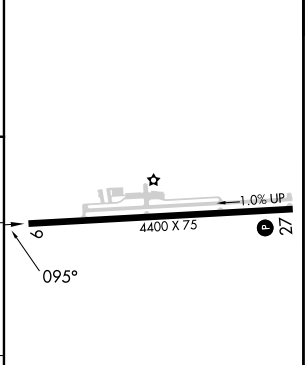


EC-2, 16 APR 2026 to 14 MAY 2026

EC-2, 16 APR 2026 to 14 MAY 2026



ELEV 1227	TDZE 1227
-----------	-----------



CATEGORY	A	B	C	D
LNAV MDA	1620-1	393 (400-1)	1620-1 $\frac{1}{8}$	393 (400-1 $\frac{1}{8}$)
CIRCLING	1760-1	533 (600-1)	1840-1 $\frac{3}{4}$ 613 (700-1 $\frac{3}{4}$)	1860-2 633 (700-2)

MIRL Rwy 9-27 **0**
REIL Rwy 9 and 27 **0**