

|  |                        |                             |   |
|--|------------------------|-----------------------------|---|
| WAAS<br>CH <b>99701</b><br><b>W24A</b> | APP CRS<br><b>240°</b> | Rwy Ldg<br>TDZE<br>Apt Elev | <b>5500</b><br><b>545</b><br><b>547</b> |
|--|------------------------|-----------------------------|---|

# RNAV (GPS) RWY 24

MUSCATINE MUNI (MUT)

RNP APCH

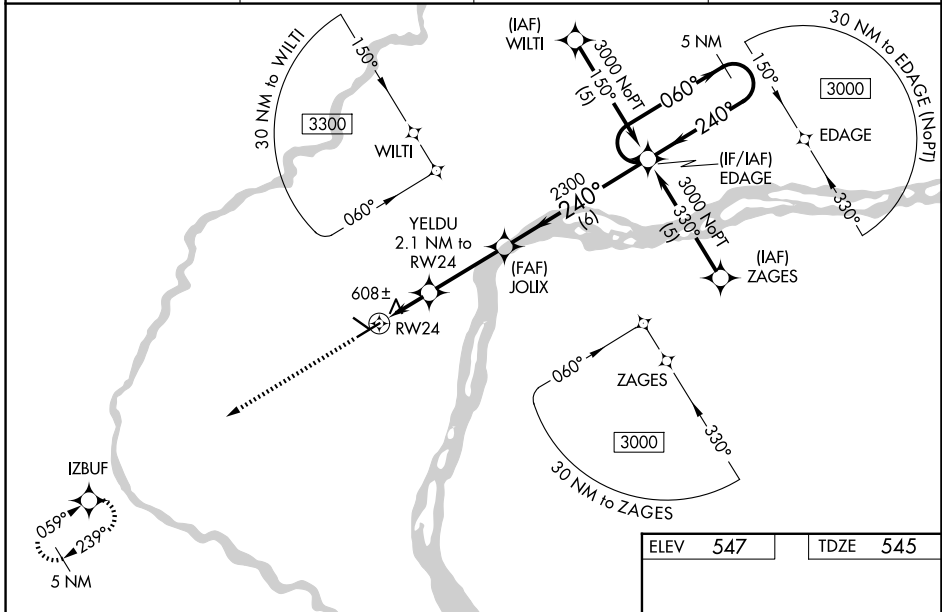
**▼** For uncompensated Baro-VNAV systems, LNAV/VNAV NA below -16°C (4°F) or above 48°C (118°F). For inop ALS, increase LPV all visibilities to 1 SM, increase LNAV/VNAV all Cats and LNAV Cats C visibility to 1½ SM, and increase LNAV Cat D visibility to 1¼ SM. When local altimeter setting not received, use Iowa City altimeter setting and increase LPV DA to 992 and all visibilities ½ SM; increase LNAV/VNAV DA to 1030 feet and all visibilities ¼ SM; increase all MDA 80 feet and LNAV Cats C and D visibility ¼ SM and Circling Cat C visibility ¼ SM. For inop ALS when using Iowa City altimeter setting, increase LPV all visibilities to 1 SM, LNAV/VNAV all visibilities to 1½ SM, LNAV Cats A and B visibility to 1 SM, and LNAV Cats C and D visibility to 1½ SM. Baro-VNAV and VDP NA when using Iowa City altimeter setting.

MALSR



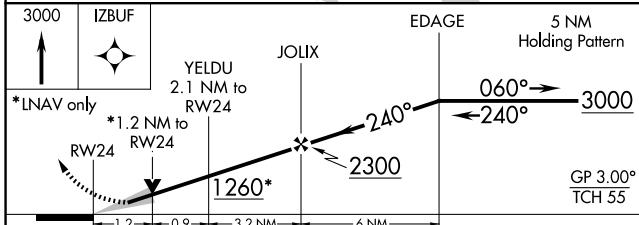
MISSED APPROACH:  
Climb to 3000 direct  
IZBUF and hold.

|                           |   |                            |                               |
|---------------------------|---|----------------------------|-------------------------------|
| AWOS-3P<br><b>120.625</b> | QUAD CITY APP CON *<br><b>133.275 257.8</b> | CLNC DEL<br><b>119.125</b> | UNICOM<br><b>122.7 (CTAF)</b> |
|---------------------------|---|----------------------------|-------------------------------|

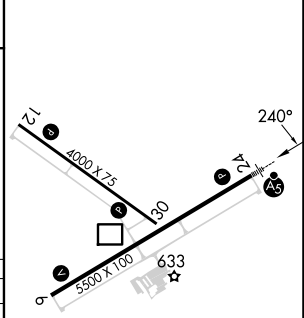


NC-3, 16 APR 2026 to 14 MAY 2026

NC-3, 16 APR 2026 to 14 MAY 2026



|          |          |
|----------|----------|
| ELEV 547 | TDZE 545 |
|----------|----------|



| CATEGORY     | A                       | B                       | C                       | D                      |
|--------------|-------------------------|-------------------------|-------------------------|------------------------|
| LPV DA       |                         | 812-½                   | 267 (300-½)             |                        |
| LNAV/VNAV DA |                         | 950-¾                   | 405 (500-¾)             |                        |
| LNAV MDA     | 960-½                   | 415 (500-½)             | 960-¾<br>415 (500-¾)    | 960-1<br>415 (500-1)   |
| CIRCLING     | 1080-1¼<br>533 (600-1¼) | 1200-1¼<br>653 (700-1¼) | 1200-1¾<br>653 (700-1¾) | 1500-3<br>953 (1000-3) |

REIL Rws 6, 12, and 30  
MIRL Rws 6-24 and 12-30