

WAAS CH 58307 W16A	APP CRS 161°	Rwy Ldg TDZE 168 Apt Elev 168	4002
--	------------------------	---	-------------

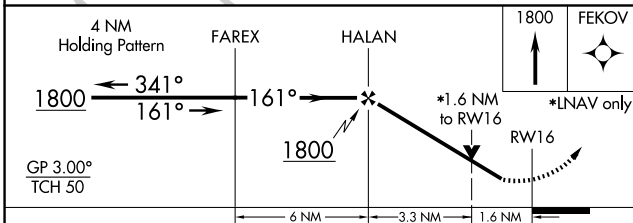
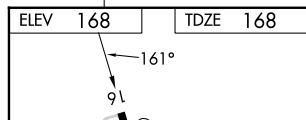
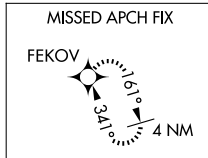
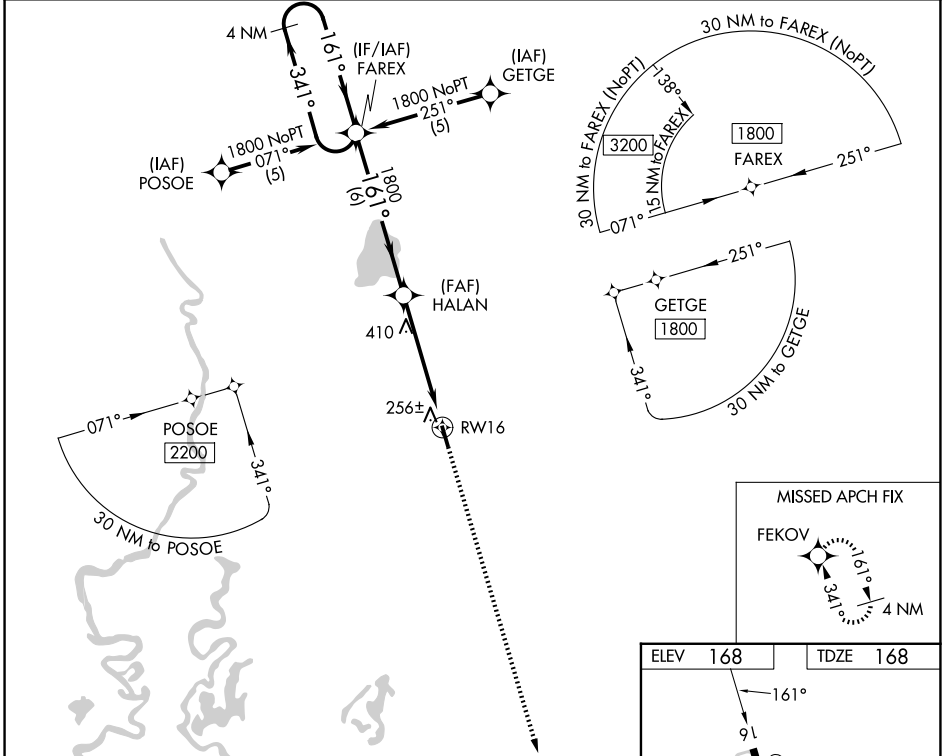
RNAV (GPS) RWY 16

MOREHOUSE MEML (BQP)

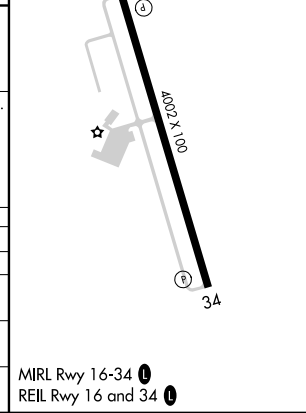
⚠ For uncompensated Baro-VNAV systems, LNAV/VNAV NA below -15°C (5°F) or above 34°C (130°F). DME/DME RNP-0.3 NA. Visibility reduction by helicopters NA. When local altimeter setting not received, use Monroe altimeter setting and increase LPV DA to 550, LNAV/VNAV DA to 577 and all MDA 60 feet; increase LNAV Cat C visibility 1/8 SM and Circling Cat C visibility 1/4 SM. Baro-VNAV NA when using Monroe altimeter setting. VDP NA when using Monroe altimeter setting.

MISSED APPROACH:
Climb to 1800 direct FEKOV and hold.

AWOS-3PT 118.375	MONROE APP CON ★ 126.9 307.9	UNICOM 122.8 (CTAF) 0
----------------------------	--	---------------------------------



CATEGORY	A	B	C	D
LPV DA	499-1¼	331 (400-1¼)		NA
LNAV/VNAV DA	526-1¼	358 (400-1¼)		NA
LNAV MDA	720-1	552 (600-1)	720-1⅝ 552 (600-1⅝)	NA
CIRCLING	720-1 552 (600-1)	780-1 612 (700-1)	820-1¾ 652 (700-1¾)	NA



SC-4, 16 APR 2026 to 14 MAY 2026

SC-4, 16 APR 2026 to 14 MAY 2026