

WAAS CH 90308 W34A	APP CRS 341°	Rwy Ldg 4002 TDZE 168 Apt Elev 168
--	------------------------	---

RNAV (GPS) RWY 34

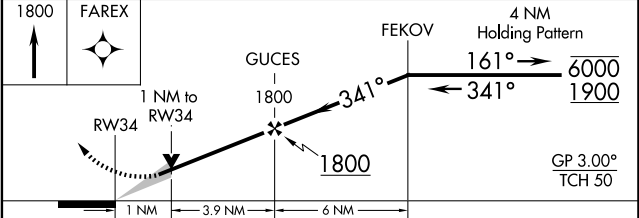
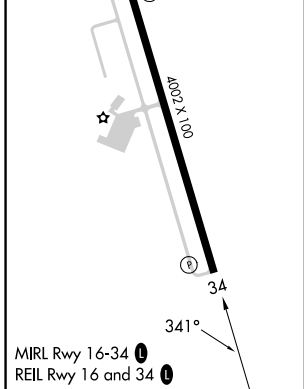
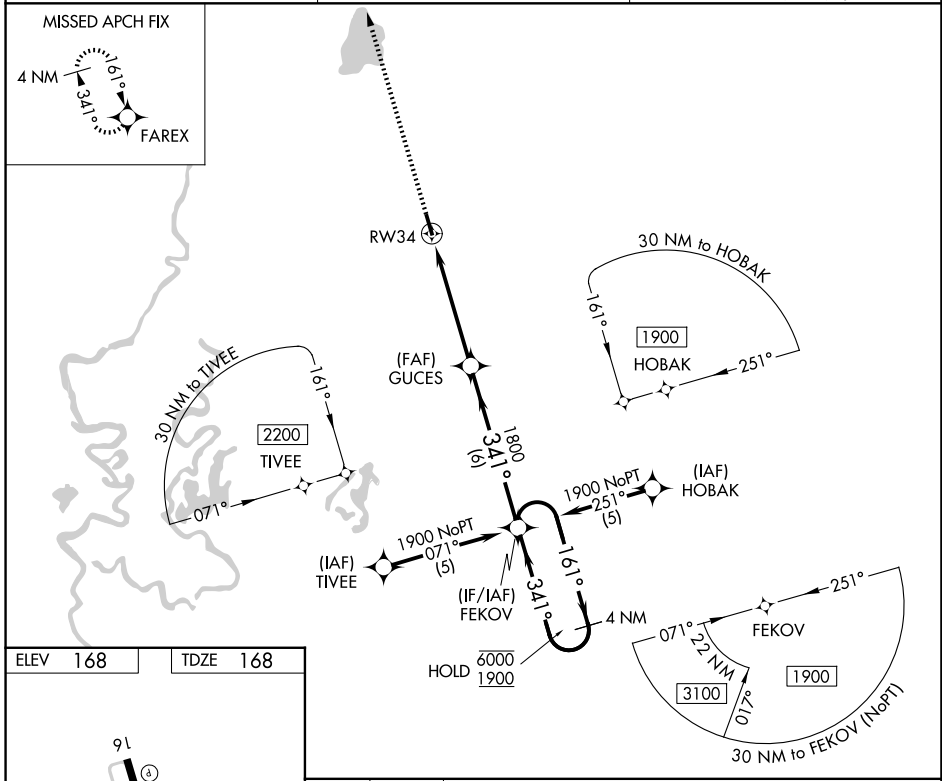
MOREHOUSE MEML (BQP)

RNP APCH-GPS.

▼ For uncompensated Baro-VNAV systems, LNAV/VNAV NA below -15°C or above 54°C. Baro-VNAV and VDP NA when using MLU altimeter setting. When local altimeter setting not received, use MLU altimeter setting and increase LPV DA to 559 feet and all visibilities 1/8 SM; increase LNAV/VNAV DA to 602 feet and all visibilities 1/8 SM; increase all MDA's 60 feet and visibility Cat C 1/4 SM.

MISSED APPROACH: Climb to 1800 direct FAREX and hold.

AWOS-3PT 118.375	MONROE APP CON ★ 126.9 307.9	UNICOM 122.8 (CTAF) 0
----------------------------	--	---------------------------------



CATEGORY	A	B	C	D
LPV DA		508-1	340 (400-1)	NA
LNAV/VNAV DA		540-1 1/8	372 (400-1 1/8)	NA
LNAV MDA		540-1	372 (400-1)	NA
CIRCLING	720-1 552 (600-1)	780-1 612 (700-1)	820-1 3/4 652 (700-1 3/4)	NA

RNAV (GPS) RWY 34

SC-4, 16 APR 2026 to 14 MAY 2026

SC-4, 16 APR 2026 to 14 MAY 2026