

(OHDEA.OHDEA2) 25107

OHDEA TWO ARRIVAL (RNAV) AL-5570 (FAA)

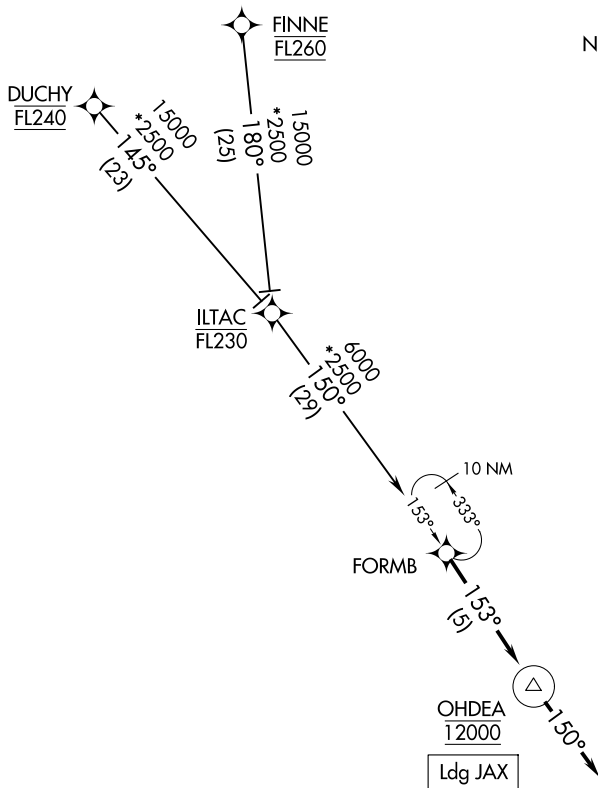
JACKSONVILLE INTL (JAX)
JACKSONVILLE, FLORIDA

JACKSONVILLE APP CON
119.0 127.0 269.9 292.15 (270°-090°)
127.775 377.075 (181°-269°)
124.9 308.4 (091°-180°)
D-ATIS 125.85

RNAV 1 - DME/DME/IRU or GPS.

RADAR required.

NOTE: Jet aircraft only.



NOTE: Chart not to scale.

ARRIVAL ROUTE DESCRIPTION

DUCHY TRANSITION (DUCHY.OHDEA2)

FINNE TRANSITION (FINNE.OHDEA2)

From FORMB on track 153° to cross OHDEA at 12000, then on track 150°.

Expect RADAR vectors to final approach course.

OHDEA TWO ARRIVAL (RNAV)

(OHDEA.OHDEA2) 17APR25

JACKSONVILLE, FLORIDA
JACKSONVILLE INTL (JAX)

SE-3, 16 APR 2026 to 14 MAY 2026

SE-3, 16 APR 2026 to 14 MAY 2026