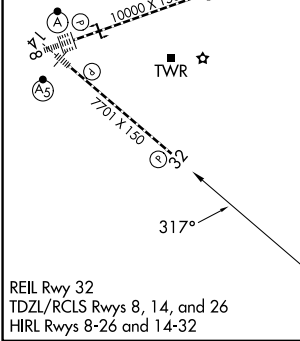
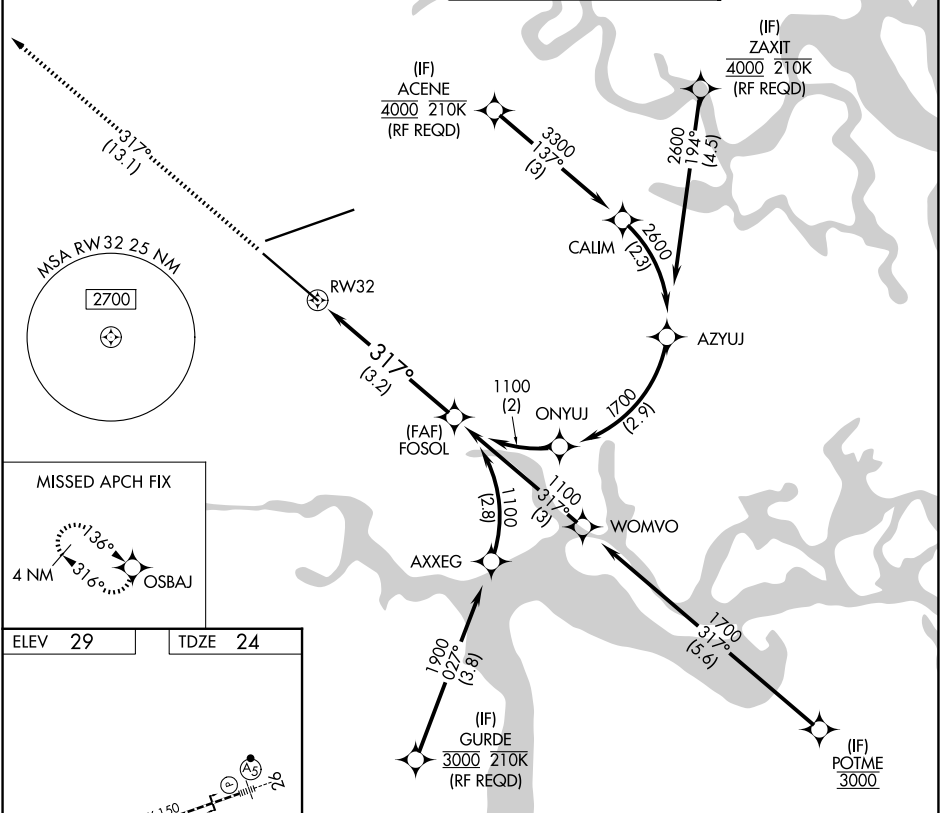


APP CRS	Rwy Ldg	7701
317°	TDZE	24
	Apt Elev	29

RNAV (RNP) Y RWY 32

JACKSONVILLE INTL (JAX)

<p>▼ For uncompensated Baro-VNAV systems, procedure NA below -5°C (23°F) or above 54°C (130°F). GPS required.</p>		<p>MISSED APPROACH: Climb to 2000 on track 317° to OSBAJ and hold.</p>	
D-ATIS	JACKSONVILLE APP CON	JACKSONVILLE TOWER	GND CON
125.85	119.0 269.9	118.3 317.7	121.9 348.6



ELEV 29	TDZE 24	<p>2000 OSBAJ VGSi and RNAV glidepath not coincident (VGSi Angle 3.00/TCH 67).</p>	
<p>tr 317°</p>		<p>FOSOL 1100</p>	
<p>RW32</p>		<p>1100</p>	
<p>See planview for multiple IF locations.</p>			
<p>3.2 NM</p>			
GP 3.00° TCH 50			
CATEGORY	A	B	C
RNP 0.11 DA		359-1½	334 (400-1½)
RNP 0.30 DA		423-1½	399 (400-1½)

AUTHORIZATION REQUIRED

SE-3, 16 APR 2026 to 14 MAY 2026

SE-3, 16 APR 2026 to 14 MAY 2026