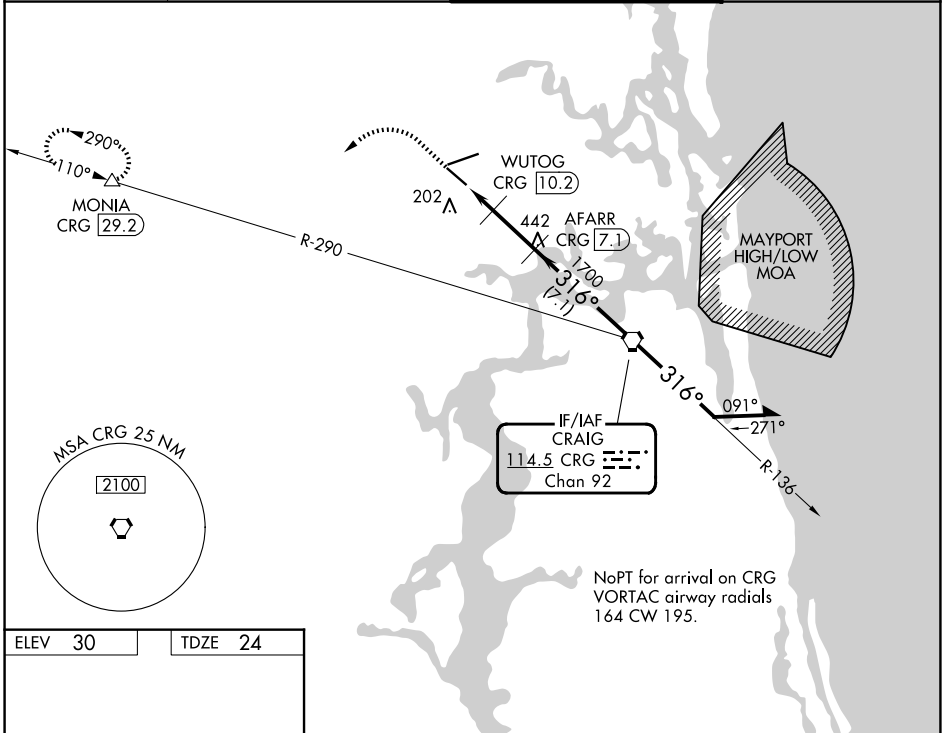


VORTAC CRG <b>114.5</b> Chan <b>92</b>	APP CRS <b>316°</b>	Rwy Ldg TDZE <b>24</b> Apt Elev <b>30</b>	<b>7701</b>
--	------------------------	---	-------------

# VOR/DME RWY 32

JACKSONVILLE INTL (JAX)

<p><b>▼</b> Rwy 32 helicopter visibility reduction by below ¼ SM NA. <b>▲</b> Cat E procedure turn NA.</p>		<p>MISSED APPROACH: Climb to 1000 then climbing left turn to 3000 on heading 250° and on CRG VORTAC R-290 to MONIA/CRG 29.2 DME and hold.</p>	
D-ATIS <b>125.85</b>	JACKSONVILLE APP CON <b>119.0 269.9</b>	JACKSONVILLE TOWER <b>118.3 317.7</b>	GND CON <b>121.9 348.6</b>



SE-3, 16 APR 2026 to 14 MAY 2026

SE-3, 16 APR 2026 to 14 MAY 2026