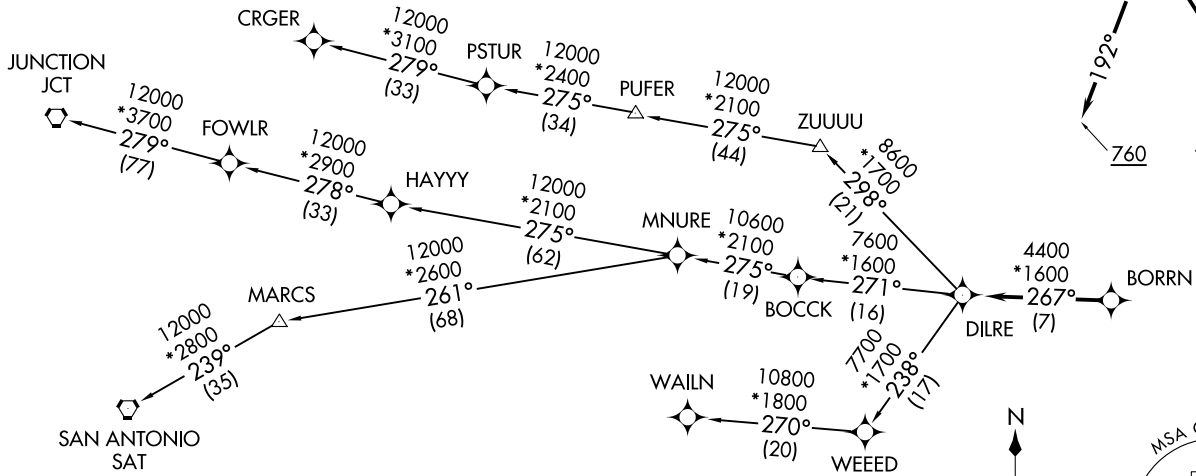
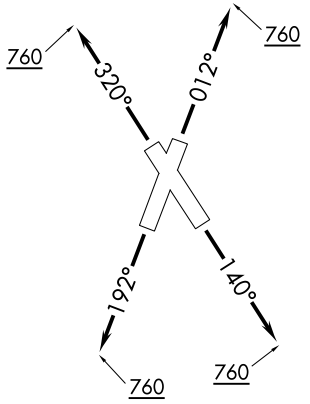


**TOP ALTITUDE:  
ASSIGNED BY ATC**

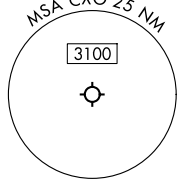
RNAV 1 - DME/DME/IRU or GPS.  
RADAR required.

ATIS  
118.325  
CLNC DEL  
120.45  
CLNC DEL (When twr closed)  
119.55  
GND CON  
120.45  
CONROE TOWER \*  
124.125 (CTAF)  
HOUSTON DEP CON  
119.7 281.4

**TAKEOFF MINIMUMS**  
Rwys 1, 14, 19, 32: Standard with  
minimum climb of 500'/NM to 760.



NOTE: CRGER-TRANSITION ATC assigned only  
for aircraft departing 54T, AXH, EFD, GLS,  
HPY, IWS, LBX, LVJ, SGR, TME, TØØ, T41.



NOTE: Chart not to scale.

(CONTINUED ON FOLLOWING PAGE)

BORRN SIX DEPARTURE (RNAV) (BORRN6.BORRN) 30NOV23  
 CONROE/NORTH HOUSTON RGNL (CXO) HOUSTON, TEXAS

(BORRN6.BORRN) 25051  
 BORRN SIX DEPARTURE (RNAV)  
 AL-5573 (FAA) CONROE/NORTH HOUSTON RGNL (CXO) HOUSTON, TEXAS

# BORRN SIX DEPARTURE (RNAV)



## DEPARTURE ROUTE DESCRIPTION

TAKEOFF RUNWAY 1: Climb on heading 012° to 760, for RADAR vectors to BORRN, thence. . . .

TAKEOFF RUNWAY 14: Climb on heading 140° to 760, for RADAR vectors to BORRN, thence. . . .

TAKEOFF RUNWAY 19: Climb on heading 192° to 760, for RADAR vectors to BORRN, thence. . . .

TAKEOFF RUNWAY 32: Climb on heading 320° to 760, for RADAR vectors to BORRN, thence. . . .

. . . .on track 267° to DILRE, then on (transition). Maintain ATC assigned altitude. Expect filed altitude 10 minutes after departure.

CRGER TRANSITION (BORRN6.CRGER)

JUNCTION TRANSITION (BORRN6.JCT)

MNURE TRANSITION (BORRN6.MNURE)

SAN ANTONIO TRANSITION (BORRN6.SAT)

WAILN TRANSITION (BORRN6.WAILN)

SC-5, 16 APR 2026 to 14 MAY 2026

SC-5, 16 APR 2026 to 14 MAY 2026