

WAAS CH <b>48816</b> <b>W26A</b>	APP CRS <b>257°</b>	Rwy Idg TDZE Apt Elev	<b>5205</b> <b>2586</b> <b>2591</b>
--	------------------------	-----------------------------	---

# RNAV (GPS) RWY 26

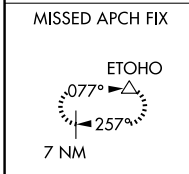
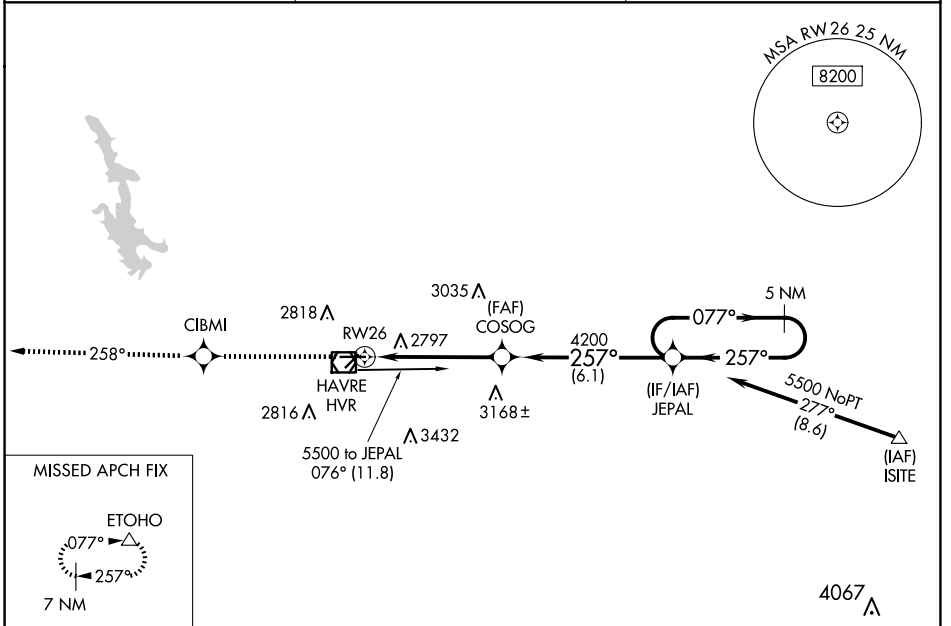
HAVRE CITY-COUNTY (HVR)

RNP APCH-GPS.

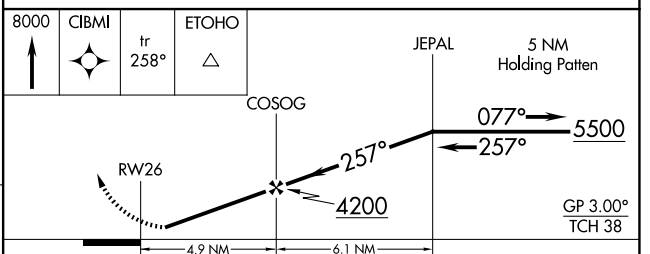
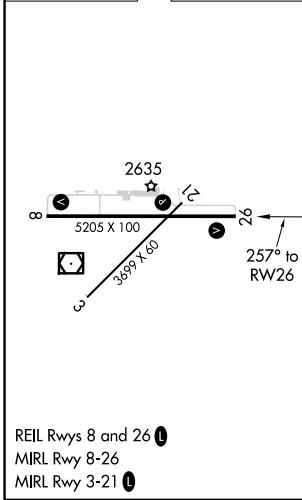
**⚠** For uncompensated Baro-VNAV systems, LNAV/VNAV NA below -20°C or above 54°C.

MISSED APPROACH: Climb to 8000 direct CIBMI and on track 258° to ETOHO and hold, continue climb-in-hold to 8000.

ASOS <b>135.225</b>	SALT LAKE CENTER <b>133.4 285.4</b>	UNICOM <b>122.8 (CTAF) 0</b>
------------------------	--	---------------------------------



ELEV 2591	<b>D</b>	TDZE 2586
-----------	----------	-----------



CATEGORY	A	B	C	D
LPV DA	2836- <sup>3</sup> / <sub>4</sub>		250 (300- <sup>3</sup> / <sub>4</sub> )	
LNAV/VNAV DA	3097-1 <sup>3</sup> / <sub>4</sub>		511 (600-1 <sup>3</sup> / <sub>4</sub> )	
LNAV MDA	3060-1	474 (500-1)	3060-1 <sup>1</sup> / <sub>4</sub> 474 (500-1 <sup>1</sup> / <sub>4</sub> )	3060-1 <sup>1</sup> / <sub>2</sub> 474 (500-1 <sup>1</sup> / <sub>2</sub> )
CIRCLING	3080-1 489 (500-1)	3120-1 529 (600-1)	3360-2 <sup>1</sup> / <sub>4</sub> 769 (800-2 <sup>1</sup> / <sub>4</sub> )	3740-3 1149 (1200-3)

NW-1, 16 APR 2026 to 14 MAY 2026

NW-1, 16 APR 2026 to 14 MAY 2026