

HAVRE, MONTANA

AL-5575 (FAA)

21 280

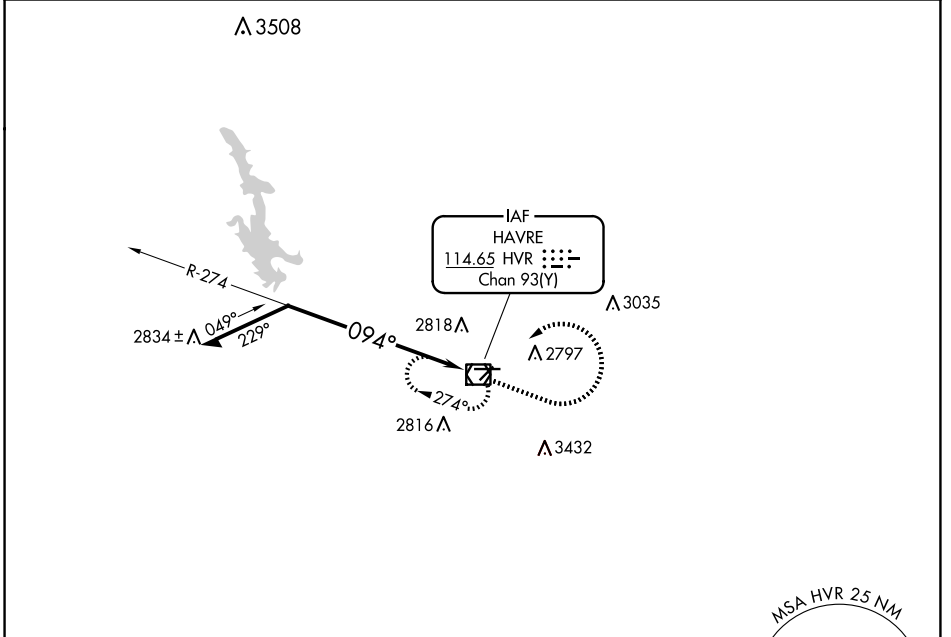
VOR/DME HVR <b>114.65</b> Chan 93(Y)	APP CRS <b>094°</b>	Rwy Idg TDZE Apt Elev	<b>5205</b> <b>2585</b> <b>2591</b>
--	------------------------	-----------------------------	---

# VOR RWY 8

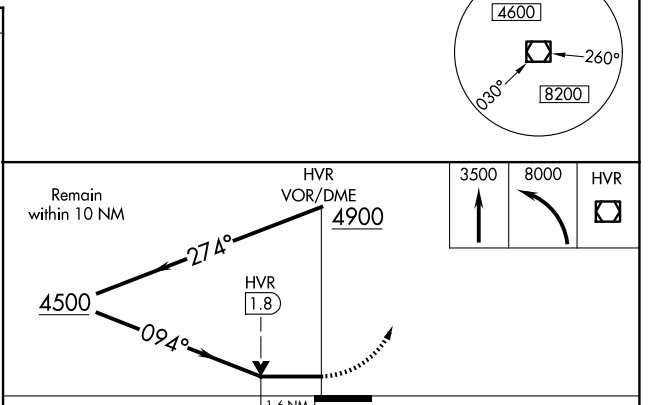
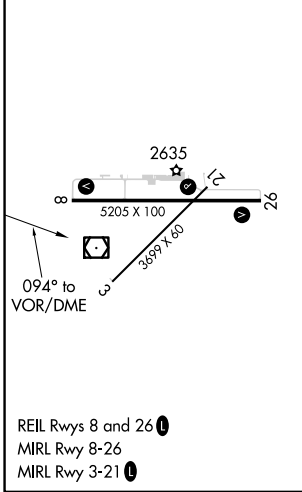
HAVRE CITY-COUNTY (HVR)

**MISSED APPROACH:** Climb to 3500 then climbing left turn to 8000 direct HVR VOR/DME and hold, continue climb-in-hold to 8000.

ASOS <b>135.225</b>	SALT LAKE CENTER <b>133.4 285.4</b>	UNICOM <b>122.8 (CTAF)</b>
------------------------	--	-------------------------------



ELEV 2591	<b>D</b>	TDZE 2585
-----------	----------	-----------



CATEGORY	A	B	C	D
S-8	3140-1	555 (600-1)	3140-1½	555 (600-1½)
CIRCLING	3140-1	549 (600-1)	3360-2¼ 769 (800-2¼)	3740-3 1149 (1200-3)

HAVRE, MONTANA  
Amdt 7B 07OCT21

48°33'N-109°46'W

# HAVRE CITY-COUNTY (HVR)

## VOR RWY 8

NW-1, 16 APR 2026 to 14 MAY 2026

NW-1, 16 APR 2026 to 14 MAY 2026