

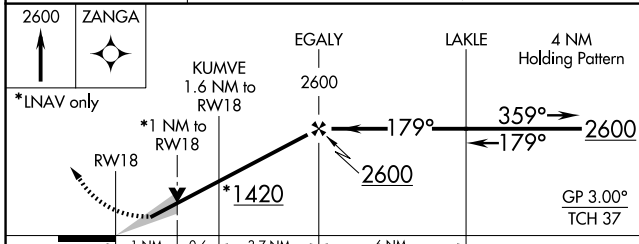
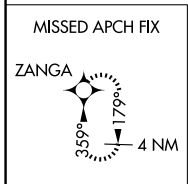
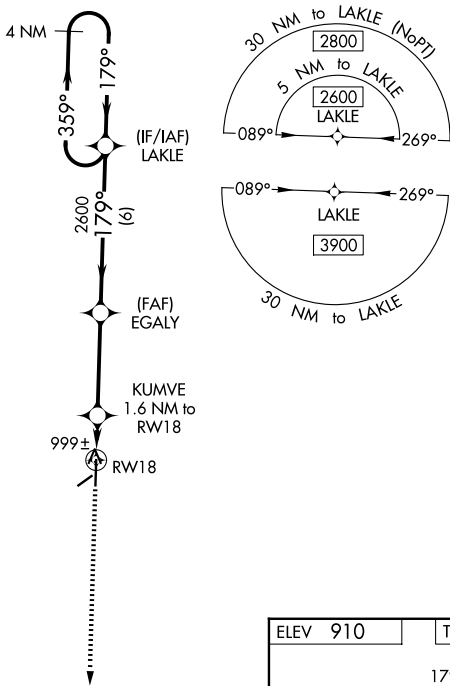
WAAS CH 61133 W18A	APP CRS 179°	Rwy Ldg 5500 TDZE 883 Apt Elev 910
--	------------------------	---

RNAV (GPS) RWY 18
SEDALIA RGNL (DMO)

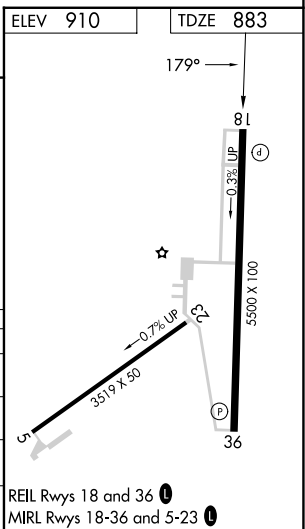
⚠ DME/DME RNP-0.3 NA. When local altimeter setting not received, use Whiteman AFB altimeter setting; increase all DA 46 feet and LNAV/VNAV visibility 1/8 mile; increase all MDA 60 feet and Cats C and D visibilities 1/4 mile. For uncompensated Baro-VNAV systems, LNAV/VNAV NA below -16°C (3°F) or above 54°C (130°F). Baro-VNAV and VDP NA when using Whiteman AFB altimeter setting. Night Landing Rwy 5, 23 NA.

MISSED APPROACH:
Climb to 2600 direct ZANGA and hold.

ASOS 120.525	WHITEMAN APP CON* 127.45 284.0	UNICOM 122.8 (CTAF) 0
------------------------	--	---------------------------------



CATEGORY	A	B	C	D
LPV DA		1133-1	250 (300-1)	
LNAV/VNAV DA		1155-1	272 (300-1)	
LNAV MDA		1260-1	377 (400-1)	
CIRCLING	1360-1 450 (500-1)	1460-1 550 (600-1)	1640-2 730 (800-2)	1640-2 1/4 730 (800-2 1/4)



NC-3, 16 APR 2026 to 14 MAY 2026

NC-3, 16 APR 2026 to 14 MAY 2026