


WAAS CH 56213 W24A	APP CRS 244°	Rwy ldg TDZE Apt Elev	5130 817 823
--	------------------------	-----------------------------	---

RNAV (GPS) RWY 24

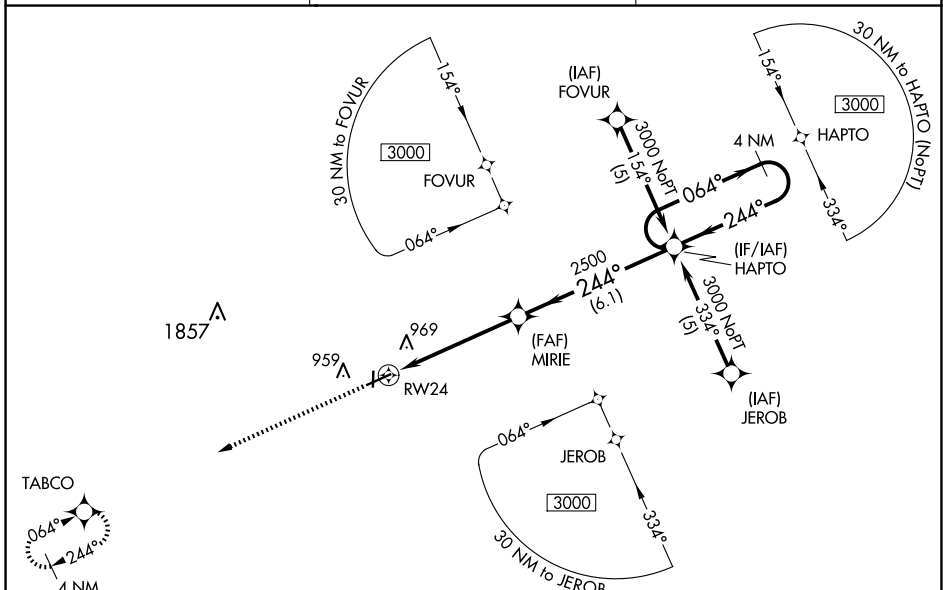
MEXICO MEML (MYJ)

NA Helicopter visibility reduction below 3/4 SM NA. Inoperative table does not apply. DME/DME RNP-0.3 NA. For uncompensated Baro-VNAV systems, LNAV/VNAV NA below -16°C (4°F) or above 54°C (130°F). When local altimeter setting not received, use Columbia Rgnl altimeter setting; increase LPV DA to 1200 feet; increase LNAV/VNAV DA to 1352 feet; increase all MDAs 80 feet and Circling visibility Cat C 1/2 SM. Baro-VNAV NA when using Columbia Rgnl altimeter setting.

MALS 

MISSED APPROACH: Climb to 3000 direct TABCO and hold.

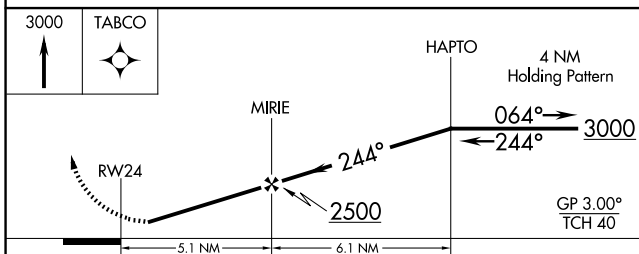
AWOS-3PT 120.575	MIZZU APP CON 124.375	CTAF 122.9
----------------------------	---------------------------------	----------------------



NC-3, 16 APR 2026 to 14 MAY 2026


NC-3, 16 APR 2026 to 14 MAY 2026

ELEV 823	TDZE 817
----------	----------



CATEGORY	A	B	C	D
LPV DA	1126-1	309 (400-1)		NA
LNAV/VNAV DA	1278-1 3/4	461 (500-1 3/4)		NA
LNAV MDA	1220-1	403 (400-1)	1220-1 1/4 403 (400-1 1/4)	NA
CIRCLING	1280-1	457 (500-1)	1420-1 1/2 597 (600-1 1/2)	NA

The obstacle diagram shows a 3200 X 50 obstacle at 81 MSL. A 5501 X 100 obstacle is shown with a 0.3% UP slope. Other obstacles are marked with MSL and AGL altitudes. The diagram also shows the 244° heading and the 0.3% UP slope.

REIL Rwy 18 
MRL Rwy 6-24 and 18-36 