

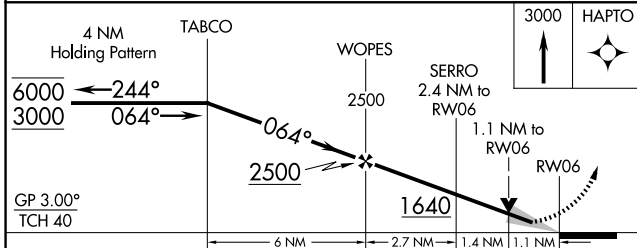
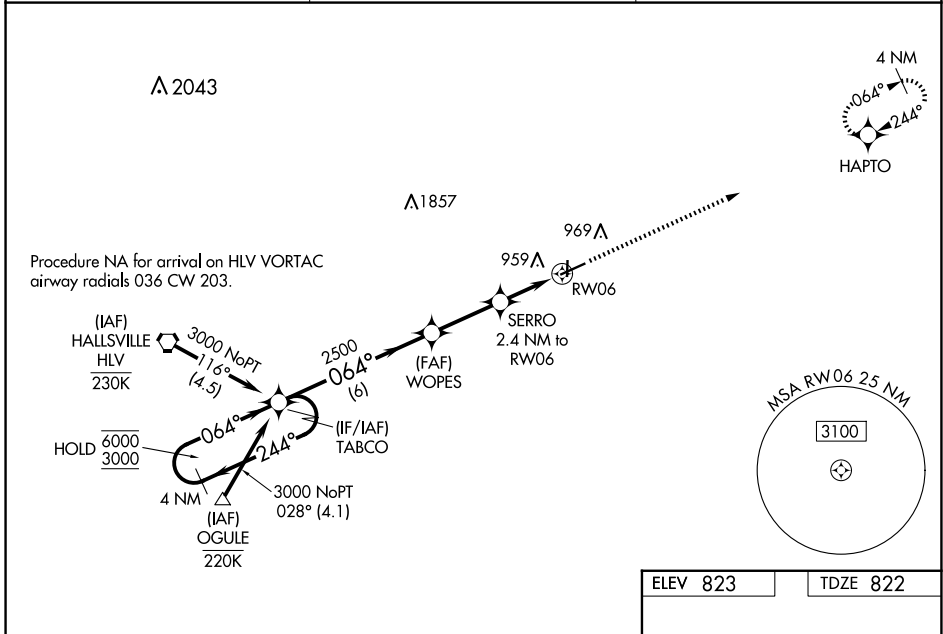
WAAS CH 97423 W06A	APP CRS 064°	Rwy Idg TDZE Apt Elev	5301 822 823
----------------------------------------	------------------------	-----------------------------	-----------------------------------------

RNAV (GPS) RWY 6

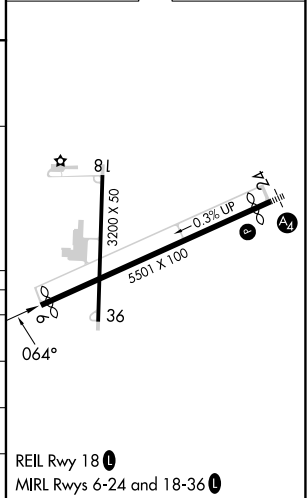
MEXICO MEML (MYJ)

RNP APCH - GPS.	<p>MISSED APPROACH: Climb to 3000 direct HAPTO and hold.</p>
<p>NA Baro-VNAV and VDP NA when using Columbia altimeter setting. For uncompensated Baro-VNAV systems, LNAV/VNAV NA below -16°C or above 54°C. When local altimeter setting not received, use Columbia altimeter setting: increase LPV DA to 1146 feet and visibilities 1/4 SM; increase LNAV/VNAV DA to 1167 feet and visibilities 1/8 SM; increase all MDAs 80 feet and LNAV visibility Cat C 3/8 SM and Circling visibility Cat C 1/2 SM.</p>	

AWOS-3PT 120.575	MIZU APP CON 124.375	CTAF 122.90
----------------------------	--------------------------------	-----------------------



ELEV 823	TDZE 822
----------	----------



	A	B	C	D
LPV DA	1072-3/4	250 (300-3/4)		NA
LNAV/VNAV DA	1093-7/8	271 (300-7/8)		NA
LNAV MDA	1200-1	378 (400-1)		NA
CIRCLING	1280-1	457 (500-1)	1420-1 1/2 597 (600-1 1/2)	NA

NC-3, 16 APR 2026 to 14 MAY 2026

NC-3, 16 APR 2026 to 14 MAY 2026