

WAAS CH <b>93536</b> <b>W09A</b>	APP CRS <b>094°</b>	Rwy Ldg TDZE Apt Elev	<b>4004</b> <b>38</b> <b>38</b>
--	------------------------	-----------------------------	---------------------------------------

# RNAV (GPS) RWY 9

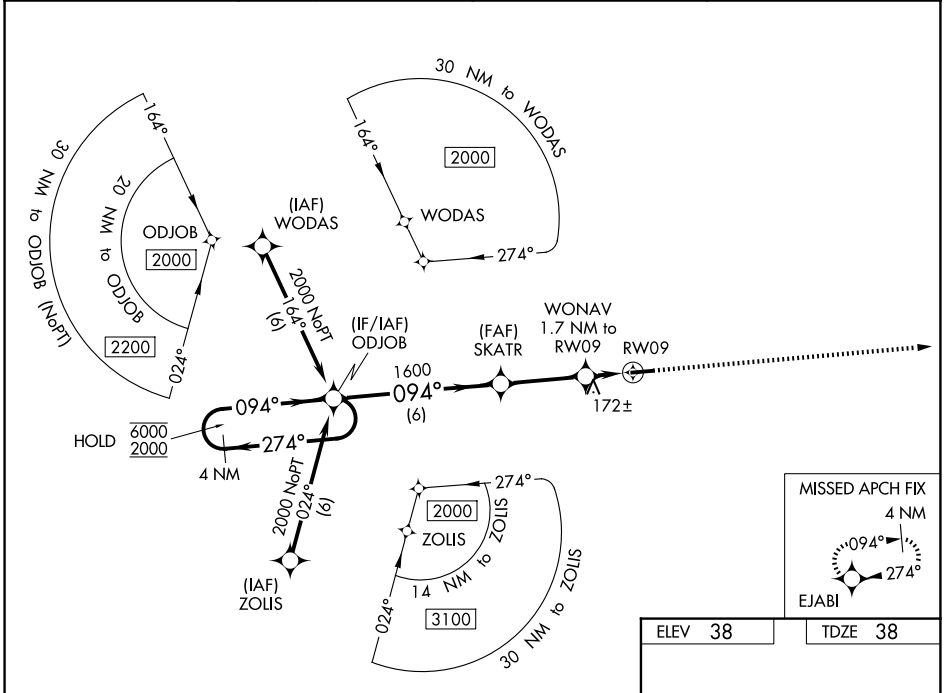
WALLACE-PENDER (ACZ)

RNP APCH - GPS.

**▼** Rwy 9 helicopter visibility reduction below 1 SM NA. Baro-VNAV NA.  
**▲** NA When local altimeter not received, use Kenansville altimeter setting.  
 Straight-in and Circling Rwy 9 NA at night.

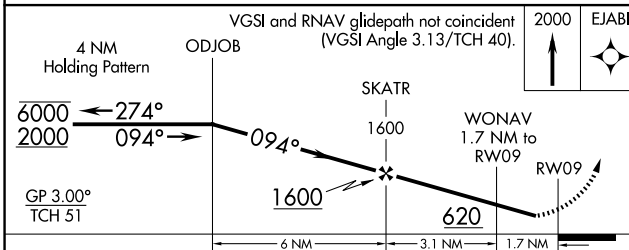
MISSED APPROACH: Climb to 2000 direct EJABI and hold.

AWOS-3P <b>121.07</b>	WILMINGTON APP CON ★ <b>135.75 317.425</b>	UNICOM <b>122.8 (CTAF) 0</b>
--------------------------	---	---------------------------------

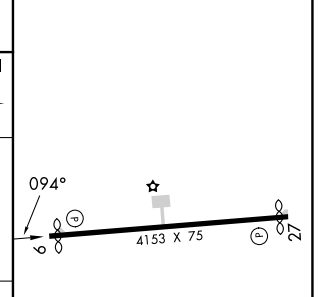


SE-2, 16 APR 2026 to 14 MAY 2026

SE-2, 16 APR 2026 to 14 MAY 2026



ELEV 38	TDZE 38
---------	---------



CATEGORY	A	B	C	D
LPV DA		401-1	363 (400-1)	
LNAV/VNAV DA		538-1½	500 (500-1½)	
LNAV MDA	500-1	462 (500-1)	500-1¾	462 (500-1¾)
CIRCLING	620-1	582 (600-1)	820-2¼ 782 (800-2¼)	820-2½ 782 (800-2½)

MIRL Rwy 9-27 0