

APP CRS 312°	Rwy Ldg TDZE Apt Elev	2690 133 135
------------------------	-----------------------------	---

RNAV (GPS) Y RWY 31R

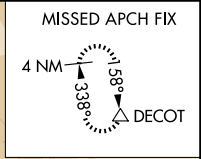
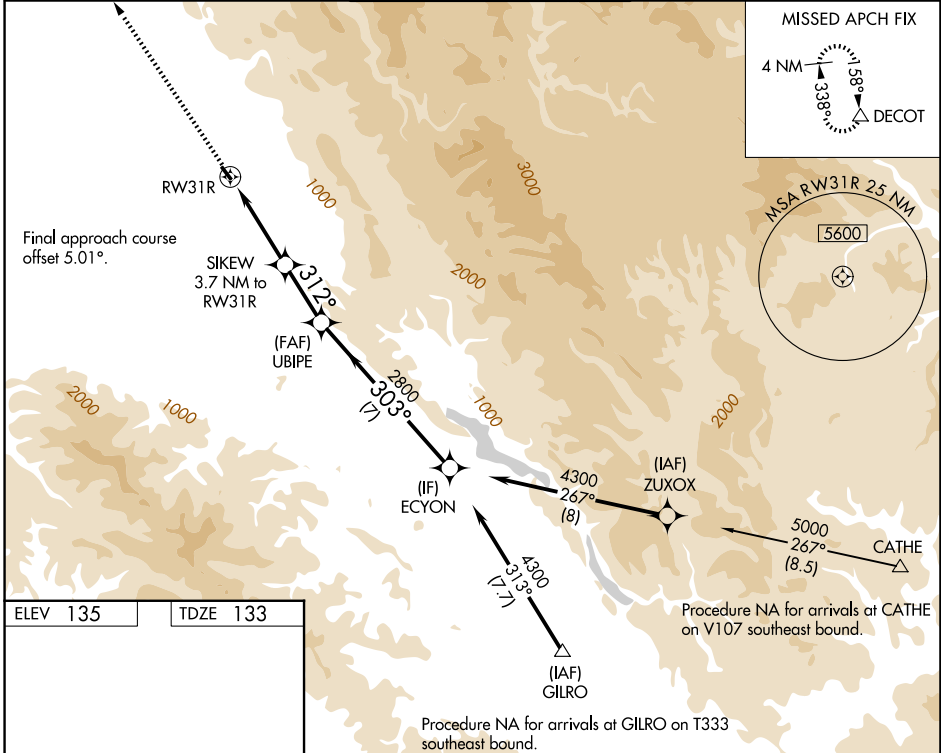
REID-HILLVIEW OF SANTA CLARA COUNTY (R.H.V)

RNP APCH.

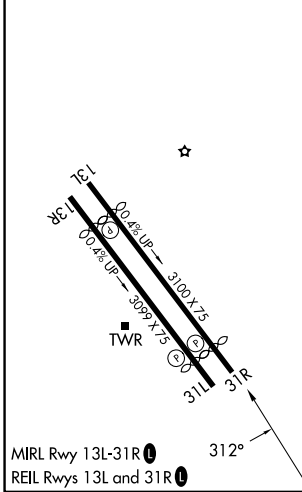
NA Circling Rwy 31L NA at night. Rwy 31R helicopter visibility reduction below ¾ SM NA. VDP NA when using Norman Y Mineta San Jose Intl altimeter setting. Circling east of Rwy 13L-31R NA at night. When control tower closed, use Norman Y Mineta San Jose Intl altimeter setting and increase all MDAs 40 feet.

MISSED APPROACH: Climb to 4000 direct DECOT and hold.

ATIS 125.2	NORCAL APP CON 120.1 290.25	REID-HILLVIEW TOWER * (Rwy 13L-31R) (Rwy 13R-31L) 119.8 (CTAF) 0 126.1	GND CON 121.65	UNICOM 122.95
----------------------	---------------------------------------	---	--------------------------	-------------------------



ELEV 135	TDZE 133
----------	----------



4000	↑	DECOT	△
RWY 31R		SIKEW 3.7 NM to RWY 31R	UBIPE
2.6 NM to RWY 31R		2.6 NM to RWY 31R	ECYON
1760		≤ 4.00° TCH 45	4300
2.6 NM		1.1 NM	2.5 NM
A		B	
CATEGORY	A	B	C
LNAV MDA	1300-1¼ 1167 (1200-1¼)	1300-1½ 1167 (1200-1½)	NA
CIRCLING	1300-1¼ 1165 (1200-1¼)	1300-1½ 1165 (1200-1½)	NA

SW-2, 16 APR 2026 to 14 MAY 2026

SW-2, 16 APR 2026 to 14 MAY 2026