

WAAS CH <b>50237</b> <b>W06A</b>	APP CRS <b>062°</b>	Rwy Ldg TDZE Apt Elev	<b>3300</b> <b>9</b> <b>9</b>
--	------------------------	-----------------------------	-------------------------------------

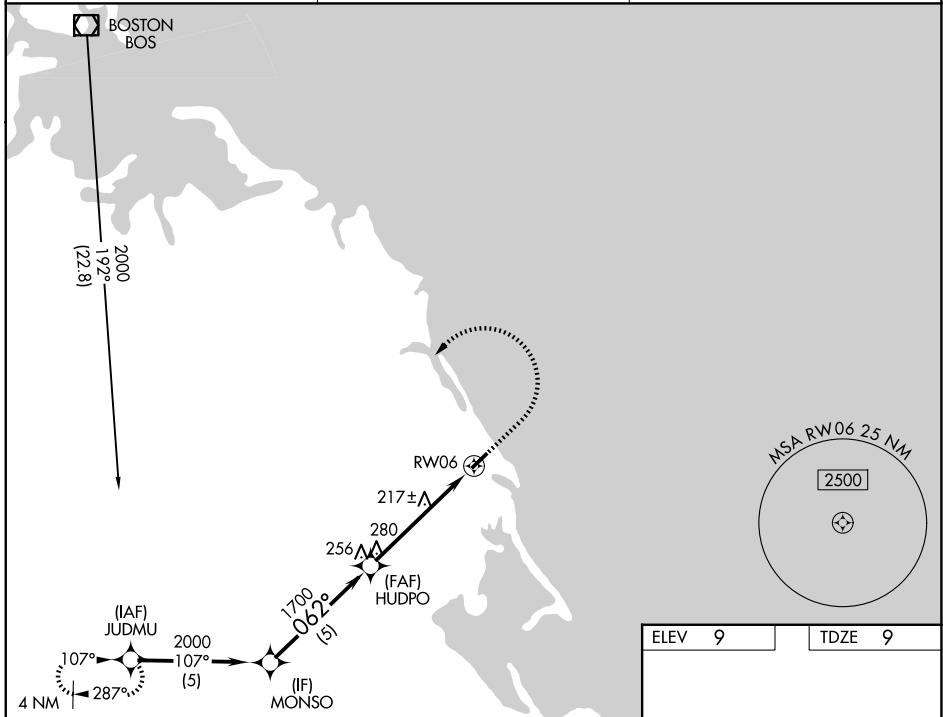
# RNAV (GPS) RWY 6

MARSHFIELD MUNI - GEORGE HARLOW FLD (GHG)

**⚠** For uncompensated Baro-VNAV systems, LNAV/VNAV NA below -15°C (5°F) or above 54°C (130°F). DME/DME RNP-0.3 NA. Baro-VNAV and VDP NA when using Plymouth altimeter setting. Helicopter visibility reduction below ¾ SM NA. When local altimeter setting not received, use Plymouth altimeter setting and increase all DA 47 feet and all MDA 60 feet, increase LPV and LNAV/VNAV all Cats visibility ½ mile.

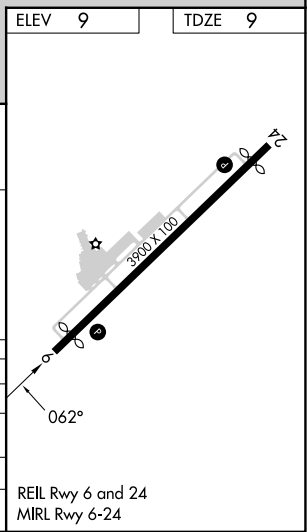
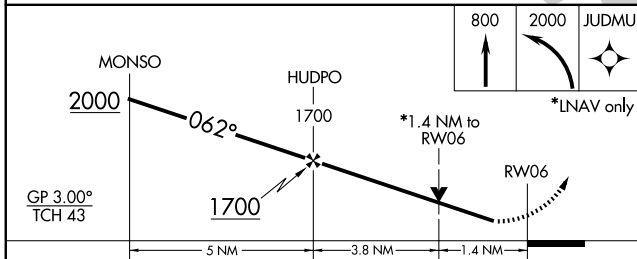
**MISSED APPROACH:** Climb to 800 then climbing left turn to 2000 direct JUDMU and hold.

AWOS-3 <b>120.0</b>	BOSTON APP CON <b>124.1</b>	UNICOM <b>122.8 (CTAF) 0</b>
------------------------	--------------------------------	---------------------------------



NE-1, 16 APR 2026 to 14 MAY 2026

NE-1, 16 APR 2026 to 14 MAY 2026



CATEGORY	A	B	C	D
LPV DA	282-7/8	273 (300-7/8)		NA
LNAV/VNAV DA	445-1½	436 (500-1½)		NA
LNAV MDA	480-1	471 (500-1)		NA
CIRCLING	500-1 491 (500-1)	880-1¼ 871 (900-1¼)		NA

REIL Rwy 6 and 24  
MIRL Rwy 6-24

# RNAV (GPS) RWY 6