

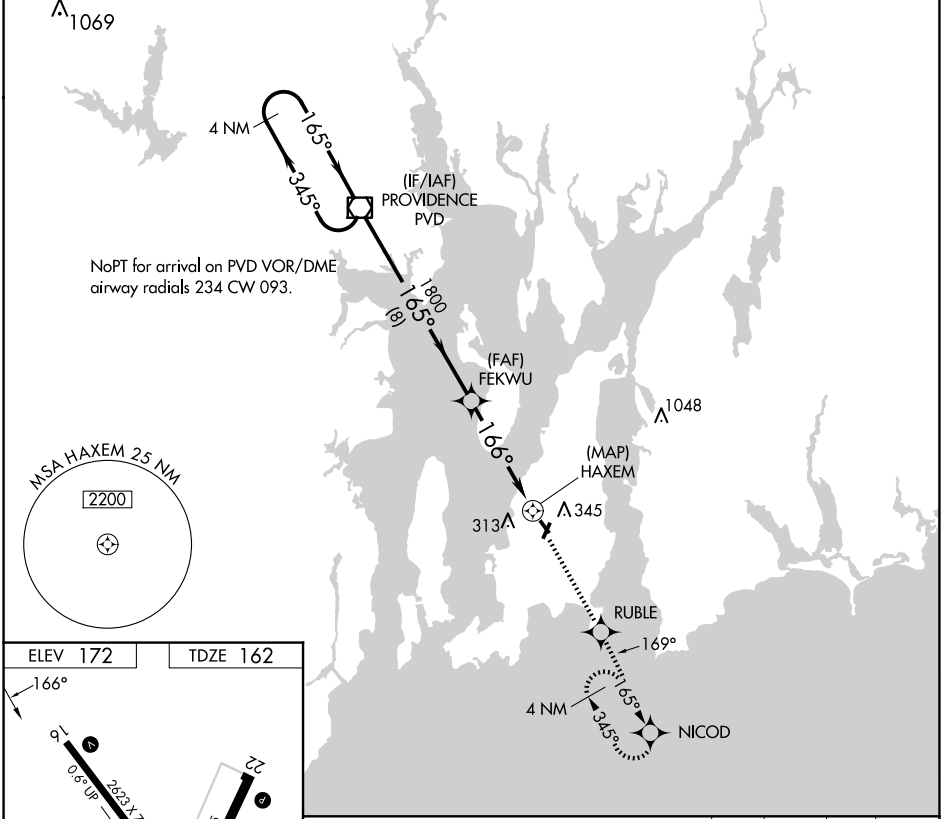
APP CRS <b>166°</b>	Rwy Ldg <b>2623</b>
	TDZE <b>162</b>
	Apt Elev <b>172</b>

# RNAV (GPS) RWY 16

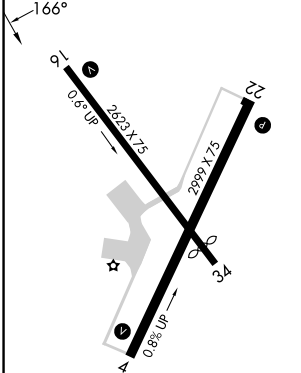
NEWPORT STATE (UUU)

RNP APCH	When local altimeter setting not received, use Providence altimeter setting and increase all MDAs 60 feet. Circling Rwy 4, 22, 34 NA at night. Rwy 16 helicopter visibility reduction below $\frac{3}{4}$ SM NA.	MISSED APPROACH: Climb to 2100 direct RUBLE and via 169° track to NICOD and hold.
----------	---	---

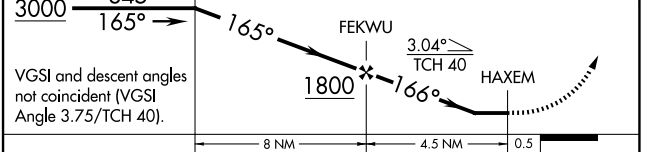
ASOS <b>132.075</b>	PROVIDENCE APP CON* <b>128.7 269.525</b>	CLNC DEL <b>127.25</b>	UNICOM <b>123.05 (CTAF)</b>
------------------------	---	---------------------------	--------------------------------



ELEV 172	TDZE 162
----------	----------



4 NM Holding Pattern	PVD VOR/DME	2100	RUBLE	tr 169°	NICOD
----------------------	-------------	------	-------	---------	-------



CATEGORY	A	B	C	D
LNAV MDA	600-1	438 (500-1)	600-1 $\frac{1}{4}$ 438 (500-1 $\frac{1}{2}$ )	NA
CIRCLING	700-1 528 (600-1)	760-1 588 (600-1)	780-1 $\frac{3}{4}$ 608 (700-1 $\frac{3}{4}$ )	NA

REIL Rwy 22  
MIRL Rws 4-22 and 16-34

NE-1, 16 APR 2026 to 14 MAY 2026

NE-1, 16 APR 2026 to 14 MAY 2026