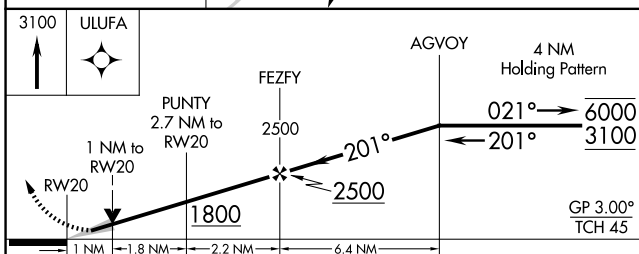
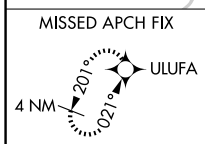
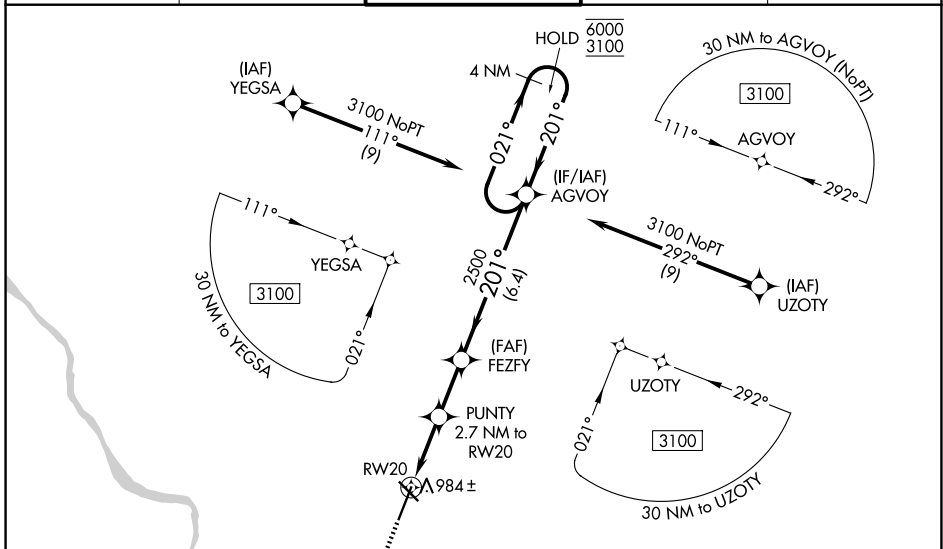


WAAS CH <b>93599</b> <b>W20A</b>	APP CRS <b>201°</b>	Rwy Ldg TDZE Apt Elev	<b>7401</b> <b>889</b> <b>889</b>
--	------------------------	-----------------------------	---

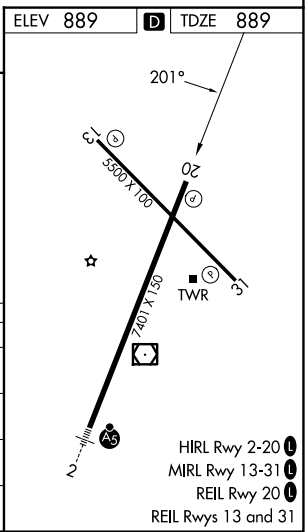
# RNAV (GPS) RWY 20

COLUMBIA RGNL (COU)

RNP APCH - GPS.		MISSED APPROACH: Climb to 3100 direct ULUFA and hold.	
<p><b>▽</b> For uncompensated Baro-VNAV systems, LNAV/VNAV NA below -18°C or above 54°C. Circling NA for Cat D west of Rwy 2 and 13.</p>			
ATIS <b>128.45</b>	MIZZU APP CON <b>124.375 353.925</b>	COLUMBIA TOWER ★ <b>119.3 (CTAF) 363.25</b>	GND CON <b>121.6</b>
		UNICOM <b>122.95</b>	



CATEGORY	A	B	C	D
LPV DA		1139-3/4	250 (300-3/4)	
LNAV/VNAV DA		1145-3/4	256 (300-3/4)	
LNAV MDA		1240-1	351 (400-1)	
CIRCLING	1300-1 411 (500-1)	1340-1 451 (500-1)	1360-1 1/2 471 (500-1 1/2)	1440-2 551 (600-2)



NC-3, 16 APR 2026 to 14 MAY 2026

NC-3, 16 APR 2026 to 14 MAY 2026