

LOC/DME I-FGH 109.35 Chan 30 (Y)	APP CRS 041°	Rwy Ldg 4775 TDZE 58 Apt Elev 72
------------------------------------------------------	------------------------	-------------------------------------------------------------

ILS or LOC RWY 4

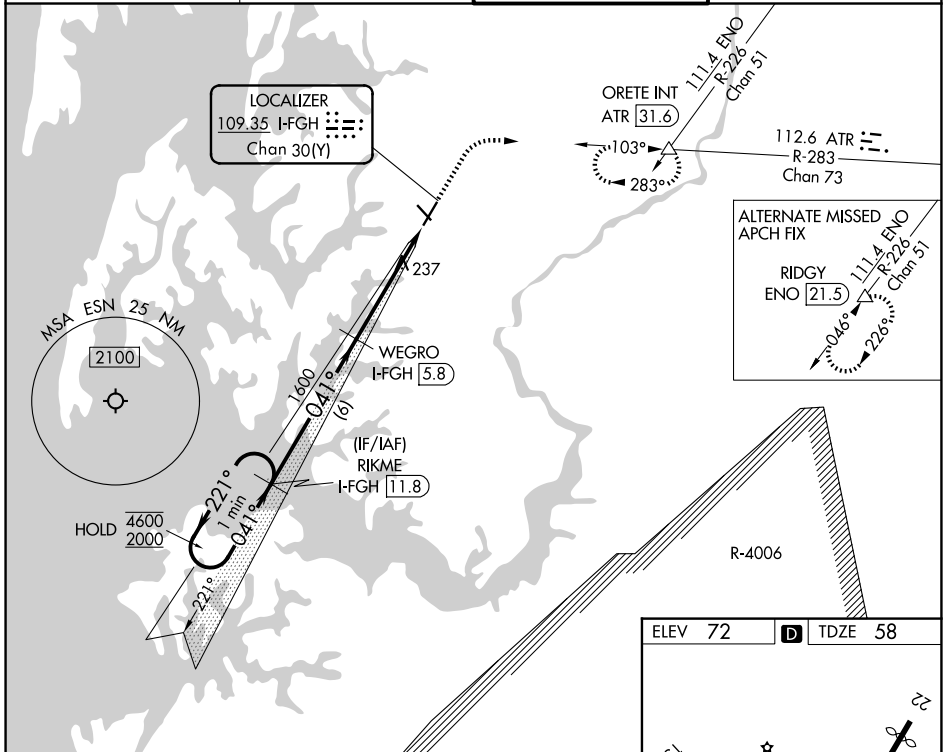
EASTON/NEWNAM FLD (ESN)

RADAR and DME required for procedure entry. DME required for LOC only.

⚠ Circling Rwy 15, 33 NA at night. Autopilot coupled approach NA below 1000.

MISSED APPROACH: Climb to 2000 on heading 041° and on ATR VOR/DME R-283 to ORETE INT/ATR 31.6 DME and hold.

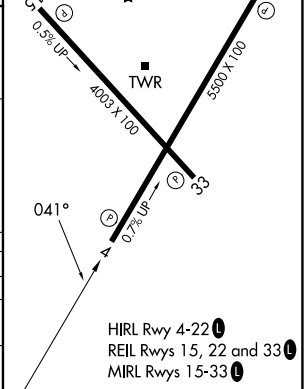
ATIS 124.475	POTOMAC APP CON 133.75 254.35	EASTON TOWER ★ 118.525 (CTAF) 0	GND CON 119.075
------------------------	-----------------------------------------	-------------------------------------------	---------------------------



NE-3, 16 APR 2026 to 14 MAY 2026

NE-3, 16 APR 2026 to 14 MAY 2026

One Minute Holding Pattern	GS unusable below 600.	2000	ATR R-283	ORETE
4600 ← 221°	RIKME I-FGH (11.8)	↑ hdg 041°	△	
2000 → 041°	WEGRO I-FGH (5.8)	* I-FGH (2.5)		* LOC only
GS 3.00° TCH 44	1600	I-FGH (1)		
	6 NM	3.4 NM	1.4 NM	
CATEGORY	A	B	C	D
S-ILS 4		600-1 ⁵ / ₈	542 (600-1 ⁵ / ₈)	
S-LOC 4	540-1	482 (500-1)	540-1 ³ / ₈	482 (500-1 ³ / ₈)
CIRCLING	540-1 468 (500-1)	640-1 568 (600-1)	640-1 ¹ / ₂ 568 (600-1 ¹ / ₂)	740-2 ¹ / ₄ 668 (700-2 ¹ / ₄)



HIRL Rwy 4-22
REIL Rws 15, 22 and 33
MIRL Rws 15-33