

|  |                        |   |
|--|------------------------|---|
| WAAS<br>CH <b>40207</b><br><b>W22A</b> | APP CRS<br><b>221°</b> | Rwy Ldg <b>5175</b><br>TDZE <b>72</b><br>Apt Elev <b>72</b> |
|--|------------------------|---|

# RNAV (GPS) RWY 22

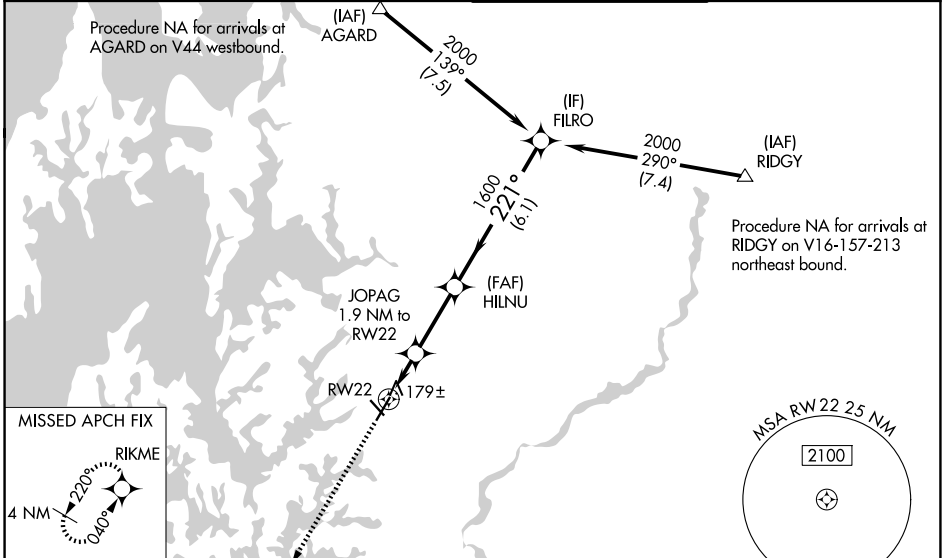
EASTON/NEWNAM FLD (E5N)

RNP APCH.

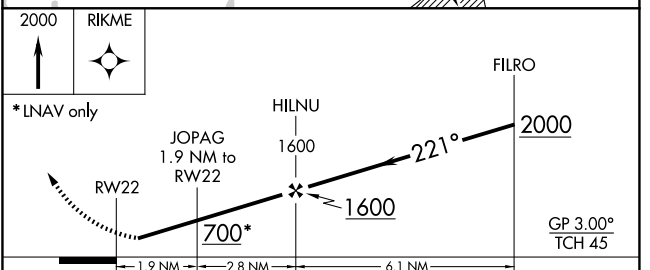
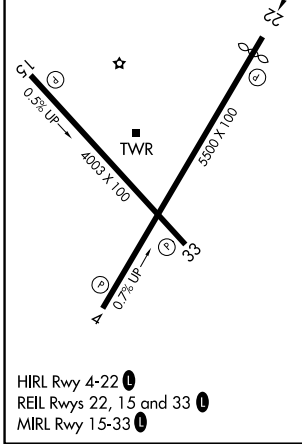
▼ Baro-VNAV NA when using Baltimore altimeter setting. For uncompensated Baro-VNAV systems, LNAV/VNAV NA below -15°C or above 43°C. Rwy 22 helicopter visibility reduction below 3/4 SM NA. When local altimeter setting not received, use Baltimore altimeter setting and increase all DA 93 feet and all MDA 100 feet; increase LPV all Cats visibility 1/8 SM, increase LNAV/VNAV all Cats visibility 1/4 SM, and increase LNAV Cats C and D 1/4 SM.

MISSED APPROACH: Climb to 2000 direct RIKME and hold.

|                        |   |   |                           |
|------------------------|---|---|---------------------------|
| ATIS<br><b>124.475</b> | POTOMAC APP CON<br><b>133.75 254.35</b> | EASTON TOWER ★<br><b>118.525</b> (CTAF) 0 | GND CON<br><b>119.075</b> |
|------------------------|---|---|---------------------------|



|         |          |         |
|---------|----------|---------|
| ELEV 72 | <b>D</b> | TDZE 72 |
|---------|----------|---------|



| CATEGORY     | A | B     | C           | D |
|--------------|---|-------|-------------|---|
| LPV DA       |   | 322-1 | 250 (300-1) |   |
| LNAV/VNAV DA |   | 362-1 | 290 (300-1) |   |
| LNAV MDA     |   | 440-1 | 368 (400-1) |   |

NE-3, 16 APR 2026 to 14 MAY 2026

NE-3, 16 APR 2026 to 14 MAY 2026