

WAAS CH 86905 W04A	APP CRS 040°	Rwy Ldg TDZE 58 Apt Elev 72	4775
--	------------------------	---	-------------

RNAV (GPS) RWY 4

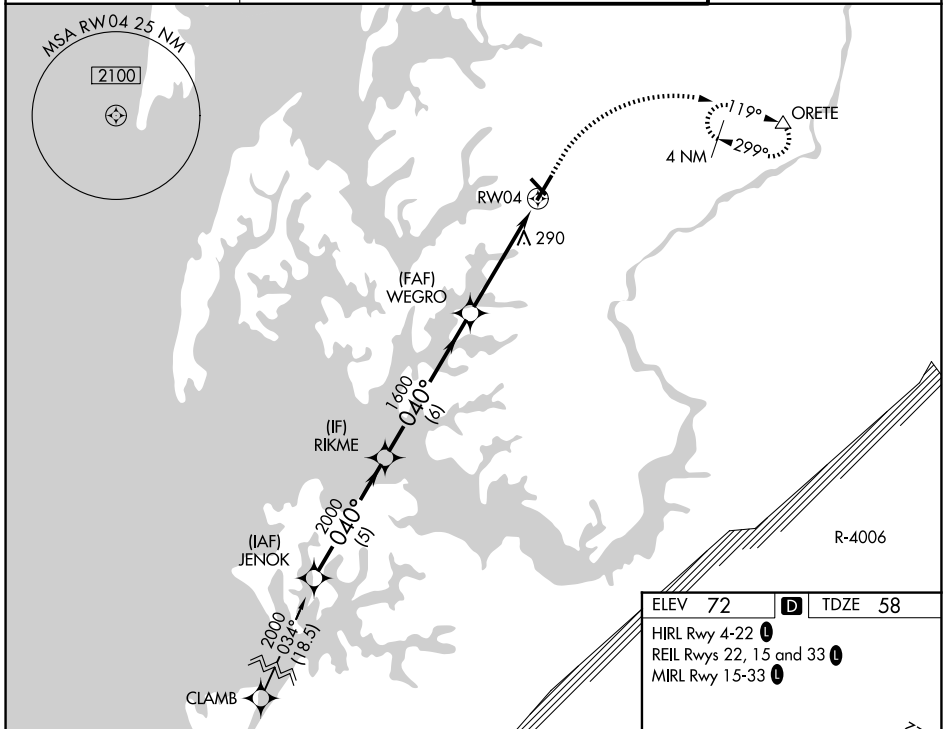
EASTON/NEWNAM FLD (ESN)

RNP APCH - GPS.

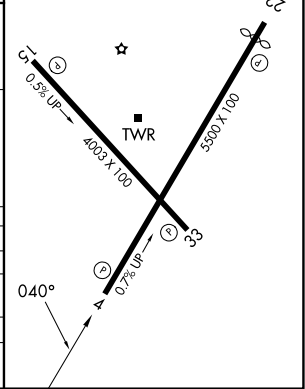
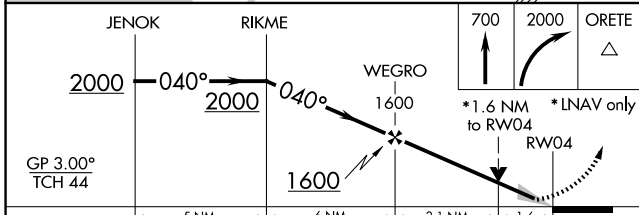
⚠ When local altimeter setting not received, use Cambridge altimeter setting; increase LPV DA to 303 feet, LNAV/VNAV DA to 670 feet and visibility 1/8 SM; increase all MDA's 60 feet and visibility LNAV Cat C/D and Circling Cat C 1/8 SM, and Circling Cat D 1/4 SM. VDP and Baro-VNAV NA when using Cambridge altimeter setting. Circling Rwy 15, 33 NA at night. For uncompensated Baro-VNAV systems, LNAV/VNAV NA below -15°C or above 54°C.

MISSED APPROACH:
Climb to 700 then climbing right turn to 2000 direct ORETE and hold.

ATIS 124.475	POTOMAC APP CON 133.75 254.35	EASTON TOWER ★ 118.525 (CTAF) 0	GND CON 119.075
------------------------	---	---	---------------------------



ELEV 72	D	TDZE 58
HIRL Rwy 4-22 0		
REIL Rwy 22, 15 and 33 0		
MIRL Rwy 15-33 0		



CATEGORY	A		B		C		D
LPV DA	258-3/4		200 (200-3/4)				
LNAV/VNAV DA	625-1 1/8		567 (600-1 1/8)				
LNAV MDA	600-1		542 (600-1)		600-1 1/8		542 (600-1 1/8)
CIRCLING	600-1		640-1		640-1 1/8		740-2
	528 (600-1)		568 (600-1)		568 (600-1 1/8)		668 (700-2)

NE-3, 16 APR 2026 to 14 MAY 2026

NE-3, 16 APR 2026 to 14 MAY 2026