

WAAS CH 97320 W26A	APP CRS 255°	Rwy Ldg TDZE Apt Elev	4858 636 650
--	------------------------	-----------------------------	---

RNAV (GPS) RWY 26R

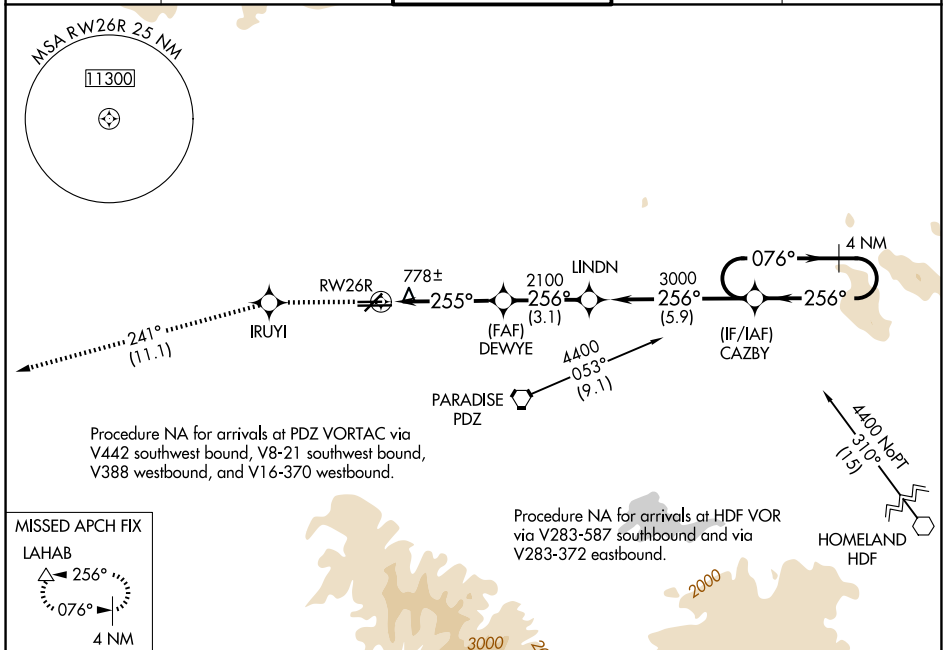
CHINO (CNO)

RNP APCH-GPS.

For uncompensated Baro-VNAV systems, LNAV/VNAV NA below -16°C or above 54°C. Helicopter visibility reduction below ¼ SM NA.

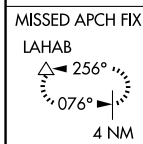
MISSED APPROACH: Climb to 4000 direct IRUYI and via 241° track to LAHAB and hold.

ATIS 125.85	SOCAL APP CON 135.4 377.125	CHINO TOWER * 118.5 (CTAF)	GND CON 121.6	UNICOM 122.95
-----------------------	---------------------------------------	--------------------------------------	-------------------------	-------------------------

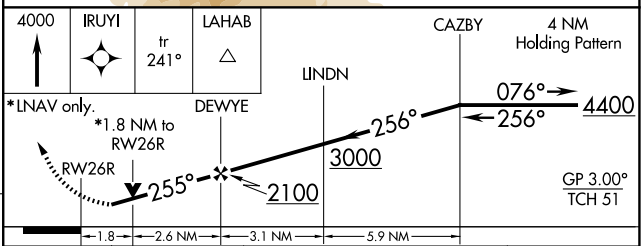
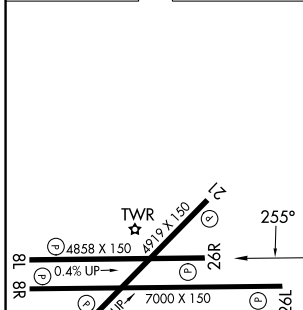


Procedure NA for arrivals at PDZ VORTAC via V442 southwest bound, V8-21 southwest bound, V388 westbound, and V16-370 westbound.

Procedure NA for arrivals at HDF VOR via V283-587 southbound and via V283-372 eastbound.



ELEV 650	TDZE 636
----------	----------



CATEGORY	A	B	C	D
LPV DA	1030-1¼ 394 (400-1¼)			
LNAV/VNAV DA	1177-2 541 (600-2)			
LNAV MDA	1260-1 624 (700-1)	1260-1¾ 624 (700-1¾)	1260-2 624 (700-2)	
CIRCLING	1260-1¾ 610 (700-1¾)			1340-2¼ 690 (700-2¼)

REIL Rwy 3 and 21
MIRL Rwy 3-21 and 8R-26L
HIRL Rwy 8L-26R

SW-3, 16 APR 2026 to 14 MAY 2026

SW-3, 16 APR 2026 to 14 MAY 2026