

APP CRS	Rwy Ldg	5425
138°	TDZE	20
	Apt Elev	20

RNAV (GPS) RWY 14

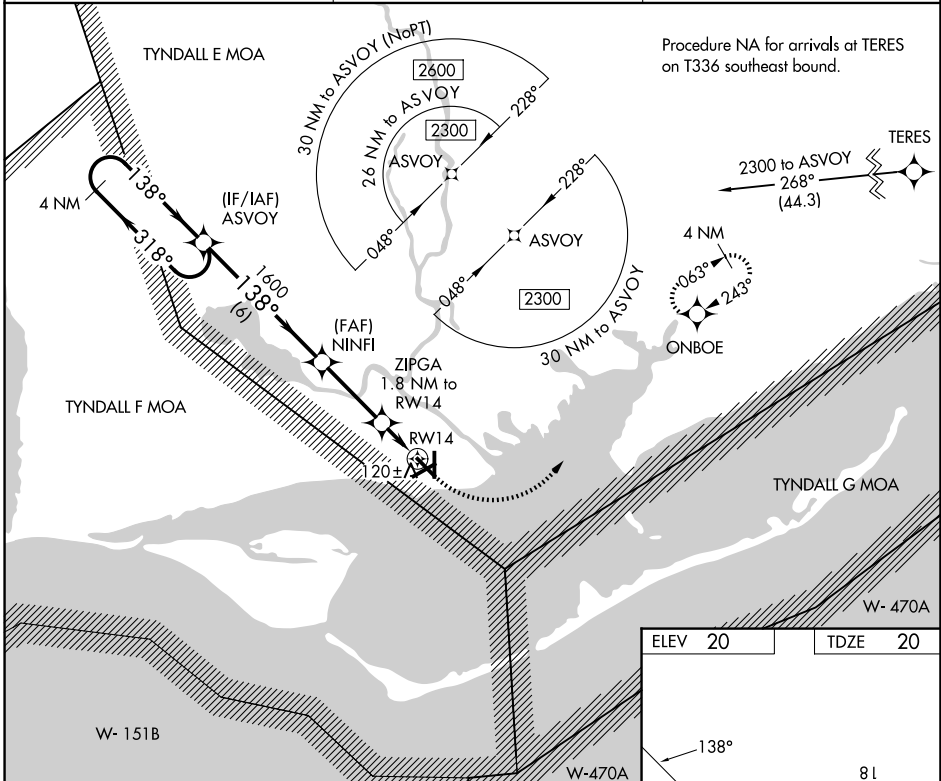
APALACHICOLA RGNL-CLEVE RANDOLPH FLD (AAF)

RNP APCH - GPS

⚠ Rwy 14 helicopter visibility reduction below $\frac{3}{4}$ SM NA. When local altimeter setting not received, use ECP altimeter setting and increase all MDAs 140 feet and LNAV visibility Cat C/D $\frac{3}{8}$ SM, and Circling visibility Cat C/D $\frac{1}{2}$ SM. Circling Rwy 6, 18, 24, 32, 36 NA at night.

MISSED APPROACH: Climb to 500 then climbing left turn to 3000 direct ONBOE and hold, continue climb-in-hold to 3000.

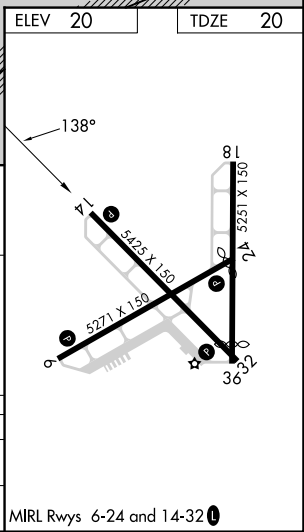
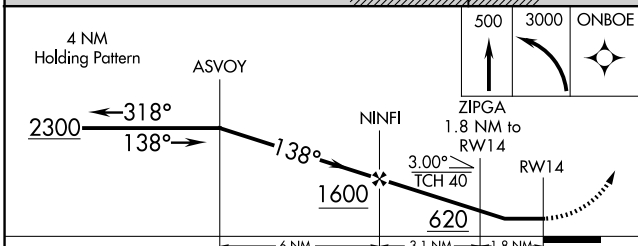
ASOS 119.925	TYNDALL APP CON ★ 124.15	UNICOM 122.8 (CTAF)
------------------------	------------------------------------	-------------------------------



Procedure NA for arrivals at TERES on T336 southeast bound.

SE-3, 16 APR 2026 to 14 MAY 2026

SE-3, 16 APR 2026 to 14 MAY 2026



CATEGORY	A	B	C	D
LNAV MDA	400-1	380 (400-1)	400-1 $\frac{1}{8}$	380 (400-1 $\frac{1}{8}$)
CIRCLING	520-1	500 (500-1)	680-1 $\frac{3}{4}$ 660 (700-1 $\frac{3}{4}$)	680-2 660 (700-2)

MIRL Rwys 6-24 and 14-32

RNAV (GPS) RWY 14