

APP CRS	Rwy Ldg	5271
063°	TDZE	20
	Apt Elev	20

RNAV (GPS) RWY 6

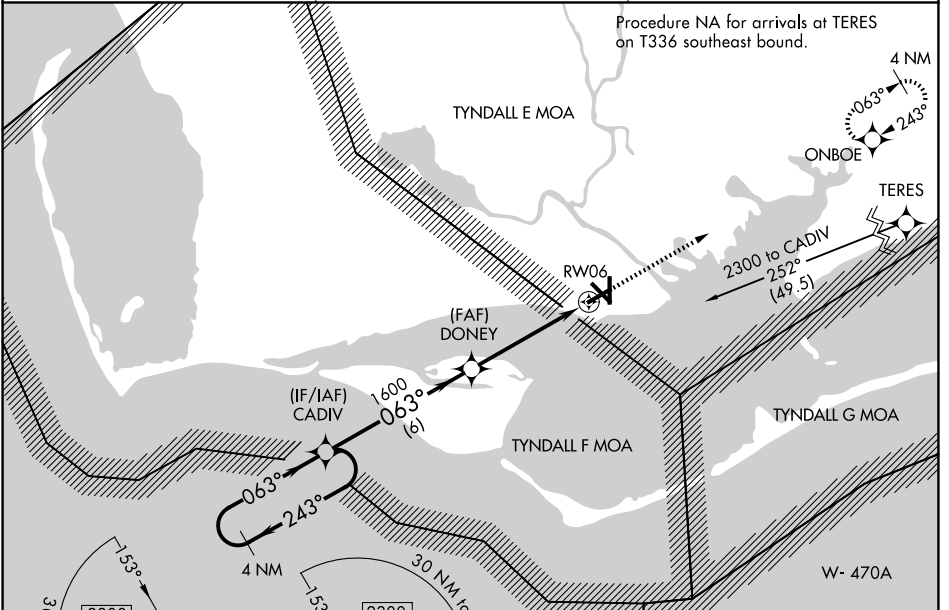
APALACHICOLA RGNL-CLEVE RANDOLPH FLD (AAF)

RNP APCH - GPS.

▼ Rwy 6 helicopter visibility reduction below 1 SM NA. When local altimeter setting not received, use ECP altimeter setting and increase all MDAs 140 feet and LNAV visibility Cat C/D 3/8 SM, and Circling visibility Cat C/D 1/2 SM. Straight-in Rwy 6 NA at night, Circling Rwy 6, 18, 24, 32, 36 NA at night.

MISSED APPROACH: Climb to 3000 direct ONBOE and hold.

ASOS 119.925	TYNDALL APP CON * 124.15	UNICOM 122.8 (CTAF) 0
------------------------	------------------------------------	---------------------------------

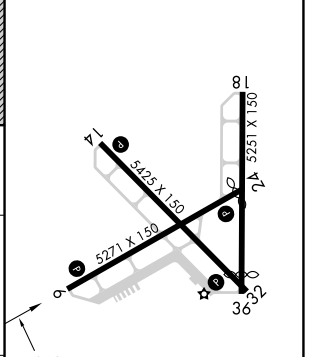
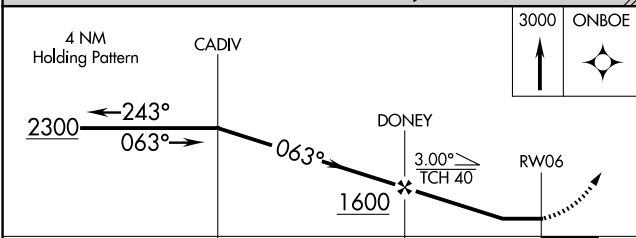


Procedure NA for arrivals at TERES on T336 southeast bound.

SE-3, 16 APR 2026 to 14 MAY 2026

SE-3, 16 APR 2026 to 14 MAY 2026

ELEV	20	TDZE	20
------	----	------	----



CATEGORY	A	B	C	D
LNAV MDA	460-1	440 (500-1)	460-13/8	440 (500-13/8)
CIRCLING	520-1	500 (500-1)	680-13/4 660 (700-13/4)	680-2 660 (700-2)

MIRL Rwy 6-24 and 14-32 0

RNAV (GPS) RWY 6