


LOC I-LWB <b>110.35</b>	APP CRS <b>045°</b>	Rwy Ldg TDZE Apt Elev	<b>7003</b> <b>2288</b> <b>2302</b>
----------------------------	------------------------	-----------------------------	---

# ILS or LOC RWY 4

## GREENBRIER VALLEY (LWB)

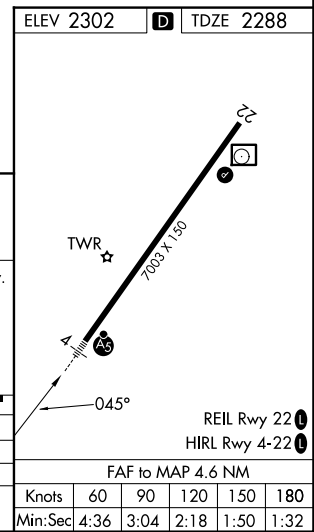
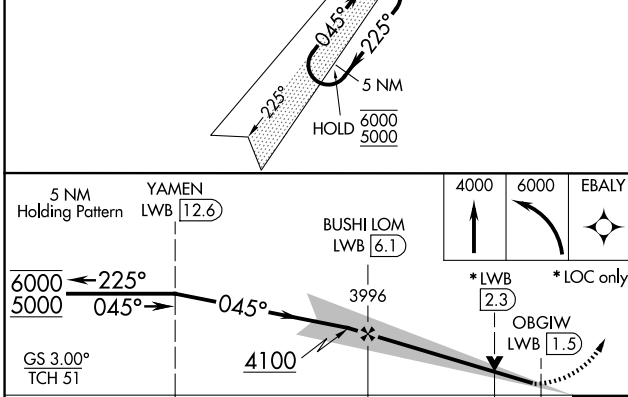
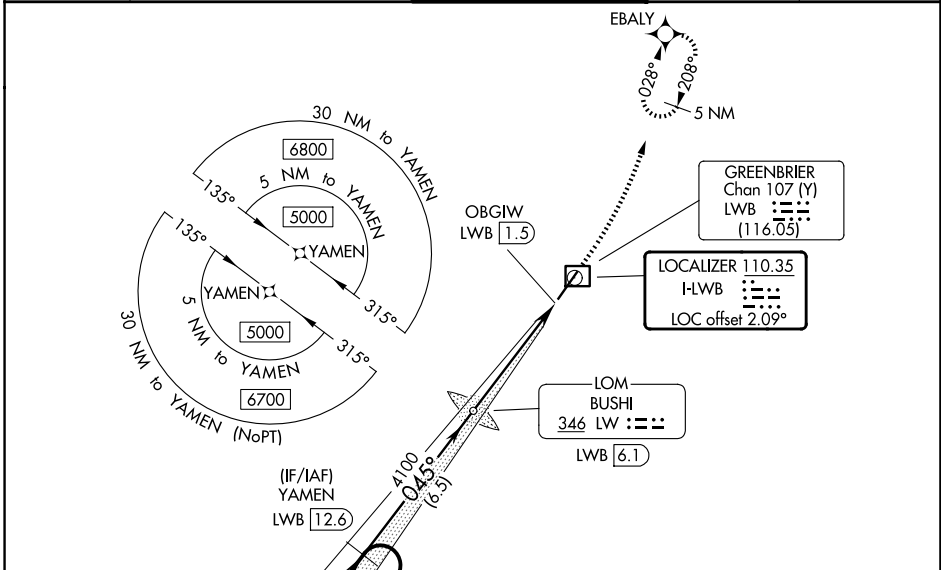
RNAV 1-GPS required.  
ADF or DME required for LOC only.

**▼** Autopilot coupled approach NA below 2700. Rwy 4 helicopter visibility reduction below 3/4 SM NA. For inop ALS increase S-ILS 4 all Cats visibility to 7/8 SM, increase S-LOC 4 Cats A/B to 1 1/8 SM.

MALSR 

MISSED APPROACH: Climb to 4000 then climbing left turn to 6000 direct EBALY and hold, continue climb-in-hold to 6000.

ATIS <b>121.4</b>	WASHINGTON CENTER <b>125.725 134.4 353.9</b>	LEWISBURG TOWER ★ <b>118.9 (CTAF) 0</b>	GND CON <b>121.9</b>	UNICOM <b>122.95</b>
----------------------	---	--	-------------------------	-------------------------



CATEGORY	A	B	C	D
S-ILS 4		2559-3/4	271 (300-3/4)	
S-LOC 4		2720-3/4	432 (500-3/4)	
CIRCLING	2840-1 538 (600-1)	3040-1 738 (800-1)	3280-3 978 (1000-3)	3680-3 1378 (1400-3)

NE-4, 16 APR 2026 to 14 MAY 2026

NE-4, 16 APR 2026 to 14 MAY 2026