


LOC I-HWV <b>108.95</b>	APP CRS <b>059°</b>	Rwy Ldg TDZE Apt Elev	<b>4201</b> <b>77</b> <b>81</b>
----------------------------	------------------------	-----------------------------	---------------------------------------

# ILS or LOC RWY 6

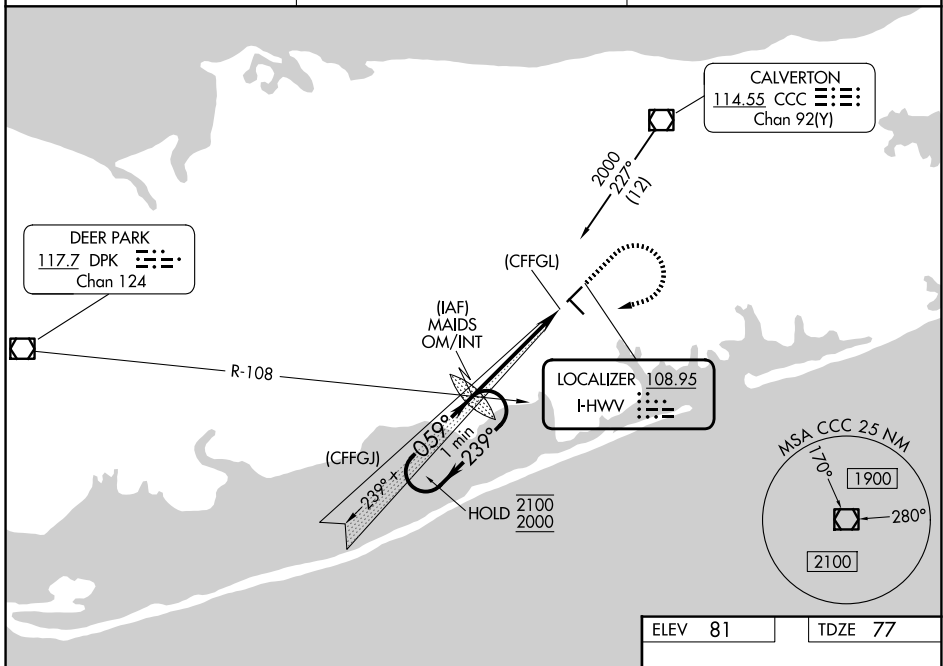
BROOKHAVEN (HWV)

**⚠** Rwy 6 helicopter visibility reduction below 1 SM NA. When local altimeter setting not received, use ISP altimeter setting and increase S-ILS 6 DA to 367; increase all MDAs 40 feet. For inop ALS, increase S-ILS 6 all Cats visibility to 7/8 SM and increase S-LOC 6 all Cats visibility to 1 SM. ILS localizer unusable 0.5 NM to threshold. Circling Rwy 6, 1.5 NA at night.

**MALSR** 

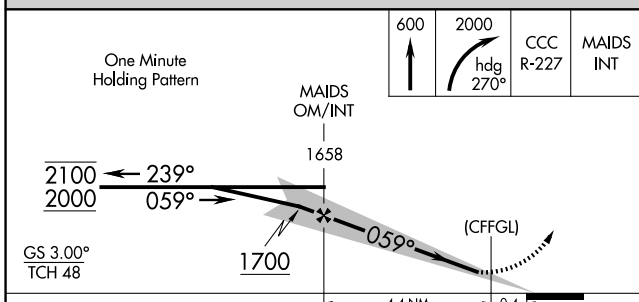
**MISSED APPROACH:** Climb to 600 then climbing right turn to 2000 on heading 270° and CCC VOR/DME R-227 to MAIDS OM/INT and hold, continue climb-in-hold to 2000.

ASOS <b>119.625</b>	NEW YORK APP CON <b>120.05 343.75</b>	UNICOM <b>122.8 (CTAF)</b>
------------------------	--	-------------------------------

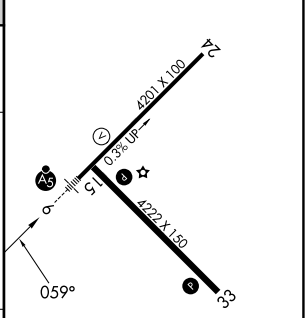


NE-2, 16 APR 2026 to 14 MAY 2026

NE-2, 16 APR 2026 to 14 MAY 2026



ELEV 81	TDZE 77
---------	---------



CATEGORY	A	B	C	D
S-ILS 6	339-3/4	262 (300-3/4)		NA
S-LOC 6	540-3/4	463 (500-3/4)		NA
CIRCLING	560-1	479 (500-1)		NA

REIL Rwy 15, 24 and 33	
MIRL Rwy 6-24 and 15-33	
FAF to MAP 4.4 NM	
Knots	60 90 120 150 180
Min:Sec	4:24 2:56 2:12 1:46 1:28