


WAAS CH 57925 W06A	APP CRS 059°	Rwy Ldg TDZE Apt Elev	4201 77 81
--	------------------------	-----------------------------	---------------------------------------

RNAV (GPS) RWY 6

BROOKHAVEN (HWV)

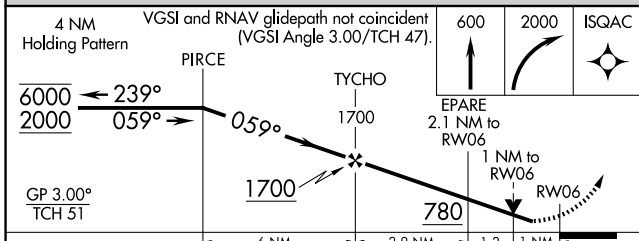
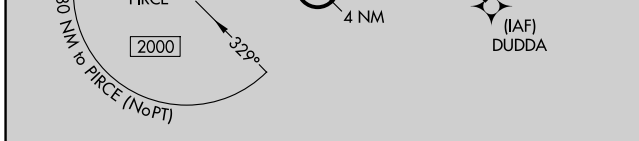
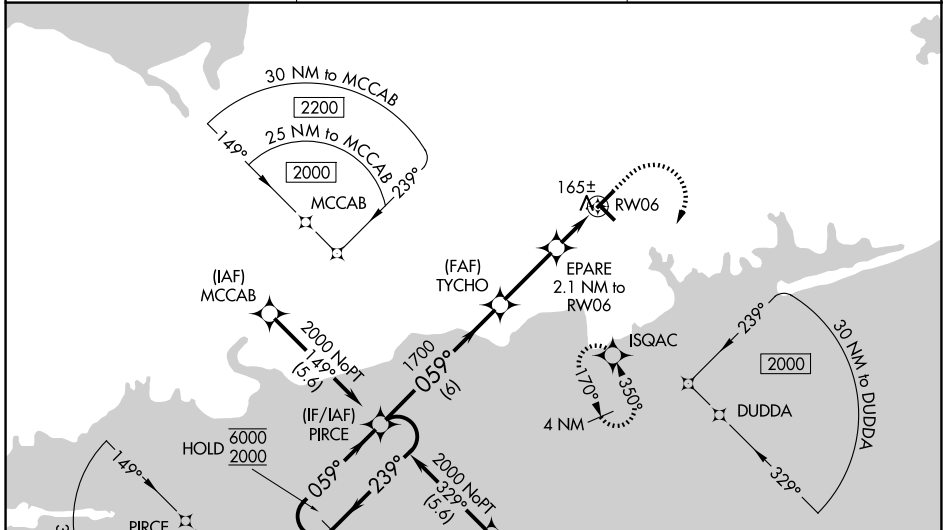
RNP APCH - GPS.

⚠ For uncompensated Baro-VNAV systems, LNAV/VNAV NA below -15°C or above 54°C.
 ⚠ Rwy 6 helicopter visibility reduction below 1 SM NA. Baro-VNAV and VDP NA when using ISP altimeter setting. When local altimeter setting not received, use ISP altimeter setting and increase LPV DA to 368 feet; increase LNAV/VNAV DA to 355 feet; increase all MDAs 40 feet. Inop table does not apply to LNAV/VNAV. For inop ALS, increase LPV all Cats visibility to 7/8 SM, increase LNAV all Cats visibility to 1 SM. For inop ALS when using ISP altimeter setting, increase LPV and LNAV/VNAV all Cats visibility to 7/8 SM, increase LNAV all Cats visibility to 1 SM. Circling Rwy 6, 15 NA at night.

MALSRS 

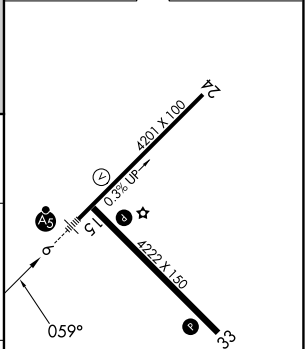
MISSED APPROACH: Climb to 600 then climbing right turn to 2000 direct ISQAC and hold.

ASOS 119.625	NEW YORK APP CON 120.05 343.75	UNICOM 122.8 (CTAF) 1
------------------------	--	---------------------------------



CATEGORY	A	B	C	D
LPV DA	340-3/4	263 (300-3/4)		NA
LNAV/VNAV DA	327-3/4	250 (300-3/4)		NA
LNAV MDA	420-3/4	343 (400-3/4)		NA
CIRCLING	560-1	479 (500-1)		NA

ELEV 81	TDZE 77
---------	---------



REIL Rwy 15, 24 and 33 1
 MIRL Rwy 6-24 and 15-33 1

NE-2, 16 APR 2026 to 14 MAY 2026

NE-2, 16 APR 2026 to 14 MAY 2026