

WAAS CH <b>40427</b> <b>W25A</b>	APP CRS <b>253°</b>	Rwy Ldg TDZE Apt Elev	<b>4153</b> <b>730</b> <b>730</b>
--	------------------------	-----------------------------	---

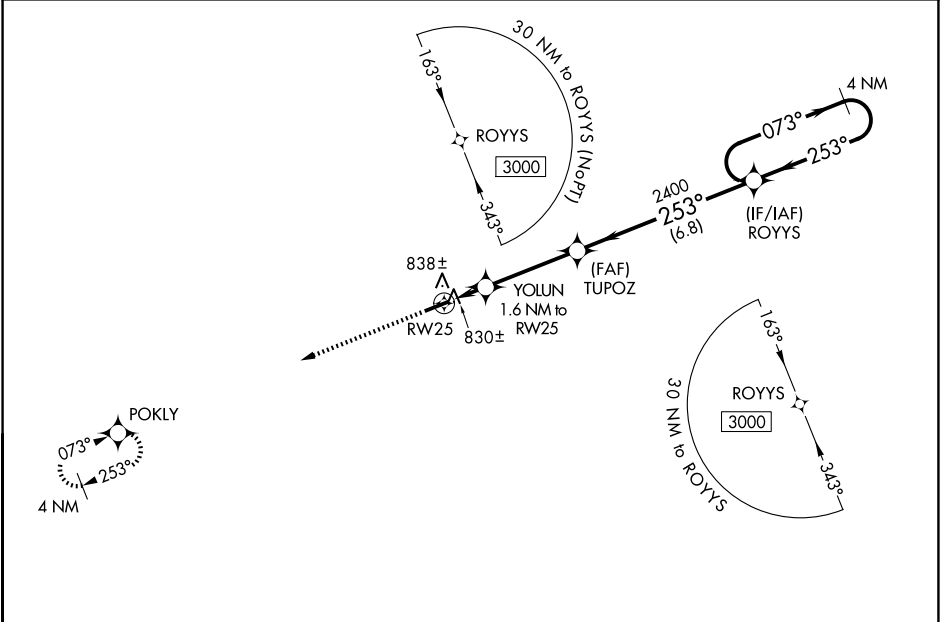
# RNAV (GPS) RWY 25

WILLIAMS COUNTY (ØG6)

**⚠** When VGSI inop, Straight-in/Circling Rwy 25 procedure NA at night. DME/DME RNP-0.3 NA. Helicopter visibility reduction below 1 SM NA. Use Defiance Meml altimeter setting; when not received, use Auburn/Dekalb Exec altimeter setting; increase all MDAs 60 feet and LP and LNAV and Circling visibility Cats C/D ¼ SM.

**⚠ NA** MISSED APPROACH: Climb to 3000 direct POKLY and hold.

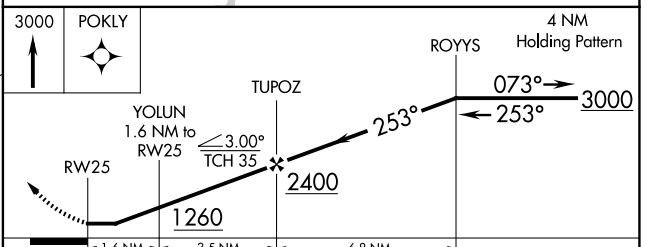
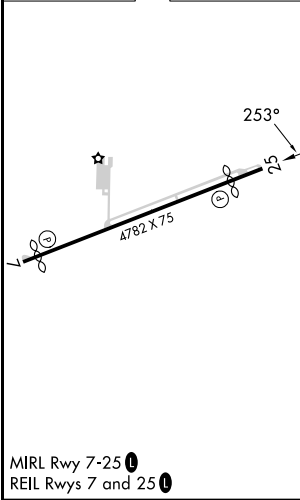
DFI ASOS <b>121.425</b>	TOLEDO APP CON <b>134.35 307.0</b>	UNICOM <b>122.8 (CTAF)</b>	<b>123.0</b> <b>Ø</b>
----------------------------	---------------------------------------	-------------------------------	-----------------------



EC-2, 16 APR 2026 to 14 MAY 2026

EC-2, 16 APR 2026 to 14 MAY 2026

ELEV 730	TDZE 730
----------	----------



CATEGORY	A	B	C	D
LP MDA	1120-1	390 (400-1)	1120-1½	390 (400-1½)
LNAV MDA	1140-1	410 (500-1)	1140-1½	410 (500-1½)
CIRCLING	1300-1	570 (600-1)	1300-1½ 570 (600-1½)	1520-2½ 790 (800-2½)