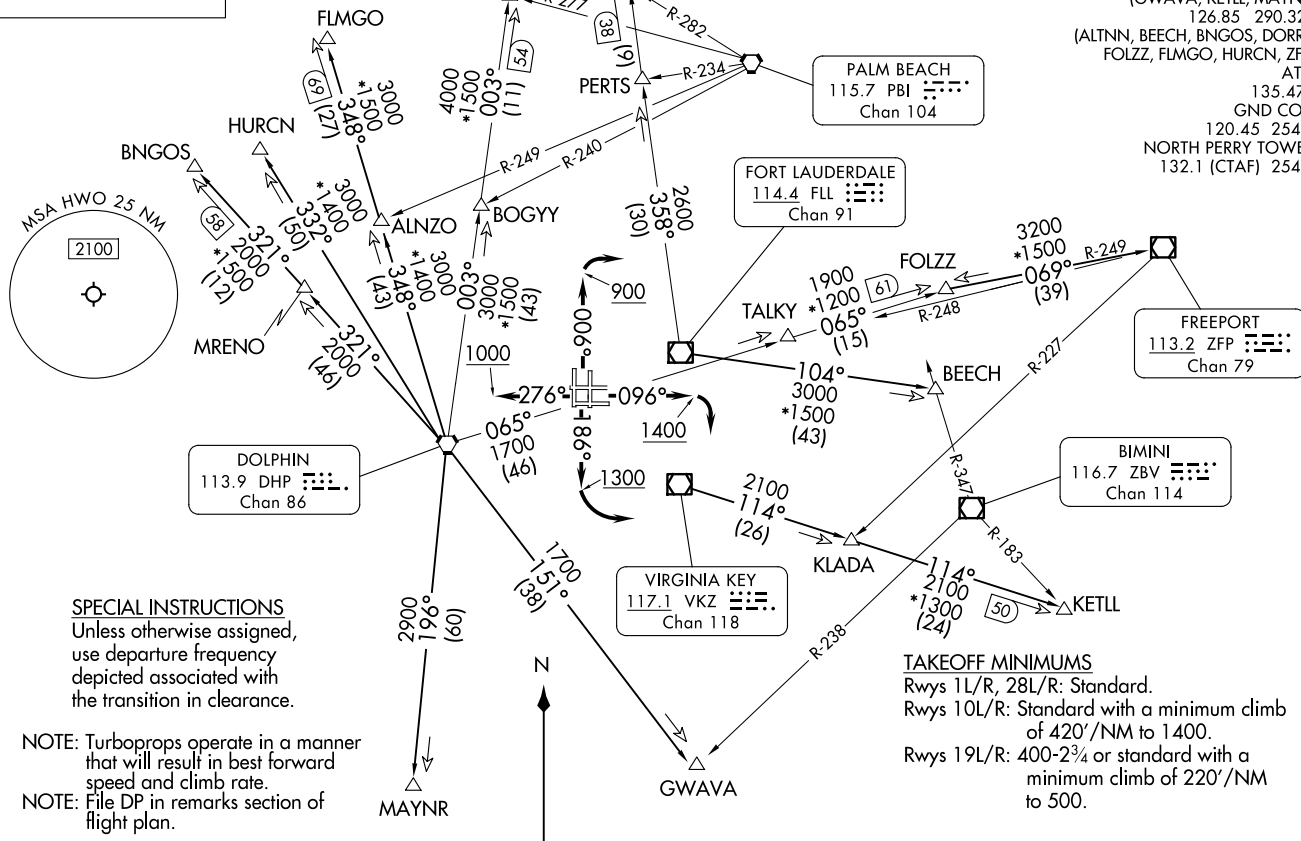


MIAMI TWO DEPARTURE
(MIA2.MIA) 26DEC24

HOLLYWOOD, FLORIDA
NORTH PERRY (HWO)

TOP ALTITUDE: AS ASSIGNED BY ATC

RADAR and DME required.



SPECIAL INSTRUCTIONS
Unless otherwise assigned, use departure frequency depicted associated with the transition in clearance.

NOTE: Turboprops operate in a manner that will result in best forward speed and climb rate.

NOTE: File DP in remarks section of flight plan.

NOTE: Chart not to scale.

MIAMI DEP CON
125.5 354.1
(GWAVA, KETLL, MAYNR)
126.85 290.325
(ALTNN, BEECH, BNGOS, DORRL,
FOLZZ, FLMGO, HURCN, ZFP)
ATIS
135.475
GND CON
120.45 254.3
NORTH PERRY TOWER*
132.1 (CTAF) 254.3

FORT LAUDERDALE
114.4 FLL
Chan 91

DOLPHIN
113.9 DHP
Chan 86

VIRGINIA KEY
117.1 VKZ
Chan 118

PALM BEACH
115.7 PBI
Chan 104

FREEPORT
113.2 ZFP
Chan 79

BIMINI
116.7 ZBV
Chan 114

TAKEOFF MINIMUMS
Rwys 1L/R, 28L/R: Standard.
Rwys 10L/R: Standard with a minimum climb of 420'/NM to 1400.
Rwys 19L/R: 400-2¾ or standard with a minimum climb of 220'/NM to 500.

(CONTINUED ON FOLLOWING PAGE)

(MIA2.MIA) 25331
MIAMI TWO DEPARTURE

AL-5606 (FAA)

NORTH PERRY (HWO)
HOLLYWOOD, FLORIDA

MIAMI TWO DEPARTURE



DEPARTURE ROUTE DESCRIPTION

TAKEOFF RUNWAYS 1L/R: Climb on heading 006° to 900 before turning right, thence...
TAKEOFF RUNWAYS 10L/R: Climb on heading 096° to 1400 before turning right, thence...
TAKEOFF RUNWAYS 19L/R: Climb on heading 186° to 1300 before turning left, thence...
TAKEOFF RUNWAYS 28L/R: Climb on heading 276° to 1000, thence...

... on transition, maintain ATC assigned altitude. Expect filed altitude 10 minutes after departure.

ALTNN TRANSITION (MIA2.ALTNN): From over FLL VOR/DME on FLL R-358 to ALTNN.

BEECH TRANSITION (MIA2.BEECH): From over FLL VOR/DME on FLL R-104 to BEECH.

BNGOS TRANSITION (MIA2.BNGOS): From over DHP VORTAC on DHP R-321 to BNGOS.

DORRL TRANSITION (MIA2.DORRL): From over DHP VORTAC on DHP R-003 to DORRL.

FLMGO TRANSITION (MIA2.FLMGO): From over DHP VORTAC on DHP R-348 to FLMGO.

FOLZZ TRANSITION (MIA2.FOLZZ): From over DHP VORTAC on DHP R-065 to FOLZZ.

FREEPORT TRANSITION (MIA2.ZFP): From over DHP VORTAC on DHP R-065 to FOLZZ then on ZFP R-249 to ZFP VOR/DME.

GWAVA TRANSITION (MIA2.GWAVA): From over DHP VORTAC on DHP R-151 to GWAVA.

HURCN TRANSITION (MIA2.HURCN): From over DHP VORTAC on DHP R-332 to HURCN.

KETLL TRANSITION (MIA2.KETLL): From over VKZ VOR/DME on VKZ R-114 to KETLL.

MAYNR TRANSITION (MIA2.MAYNR): From over DHP VORTAC on DHP R-196 to MAYNR.

SE-3, 16 APR 2026 to 14 MAY 2026

SE-3, 16 APR 2026 to 14 MAY 2026