

WAAS CH <b>42508</b> <b>W30A</b>	APP CRS <b>295°</b>	Rwy Ldg TDZE Apt Elev	<b>7002</b> <b>5628</b> <b>5673</b>
--	------------------------	-----------------------------	---

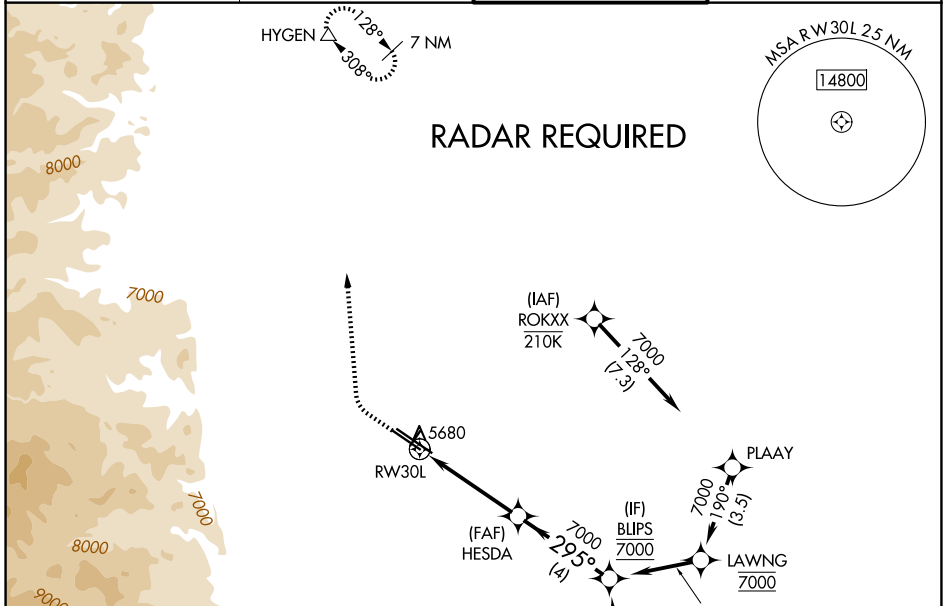
# RNAV (GPS) RWY 30L

ROCKY MOUNTAIN METRO (B.JC)

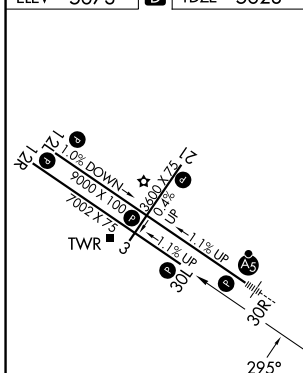
**NA** Baro-VNAV and VDP NA when using Denver Intl altimeter setting. For uncompensated Baro-VNAV systems, LNAV/VNAV NA below -26°C (-14°F) or above 47°C (116°F). DME/DME RNP-0.3 NA. When local altimeter setting not received, use Denver Intl altimeter setting and increase all DA 82 feet and all MDA 100 feet. Increase LPV all Cats, LNAV/VNAV all Cats, LNAV Cats C/D and Circling Cat C visibility ¼ mile.

**MISSED APPROACH:** Climb to 6300 then climbing right turn to 10300 direct HYGEM and hold, continue climb-in-hold to 10300.

ATIS <b>126,25</b>	DENVER APP CON <b>125.125 263,025</b>	METRO TOWER* <b>118.6 (CTAF) 233.7</b>	GND CON <b>121.7</b>
-----------------------	--	---	-------------------------



ELEV 5673 **D** TDZE 5628



	6300	10300	HYGEN	HESDA	BLIPS
Category	A	B	C	D	
LPV DA		5828-3/4	200 (200-3/4)		
LNAV/VNAV DA		5926-1 1/8	298 (300-1 1/8)		
LNAV MDA		5960-1	332 (300-1)		
CIRCLING	6180-1 507 (600-1)	6240-1 567 (600-1)	6360-2 687 (700-2)	6860-3 1187 (1200-3)	

GP 3.00° TCH 41

HIRL Rwy 12L-30R  
 MIRL Rwy 3-21 and 12R-30L  
 REIL Rwy 12L, 12R and 30L

SW-1, 16 APR 2026 to 14 MAY 2026

SW-1, 16 APR 2026 to 14 MAY 2026