

|  |                        |                         |                    |                    |
|--|------------------------|-------------------------|--------------------|--------------------|
| VOR/DME BJC<br><b>115.4</b><br>Chan <b>101</b> | APP CRS<br><b>284°</b> | Rwy Ldg<br><b>7002</b>  | 30L<br><b>9000</b> | 30R<br><b>5599</b> |
|  |                        | TDZE<br><b>5628</b>     | <b>5599</b>        |                    |
|  |                        | Apt Elev<br><b>5673</b> | <b>5673</b>        |                    |

# VOR/DME RWY 30L/R

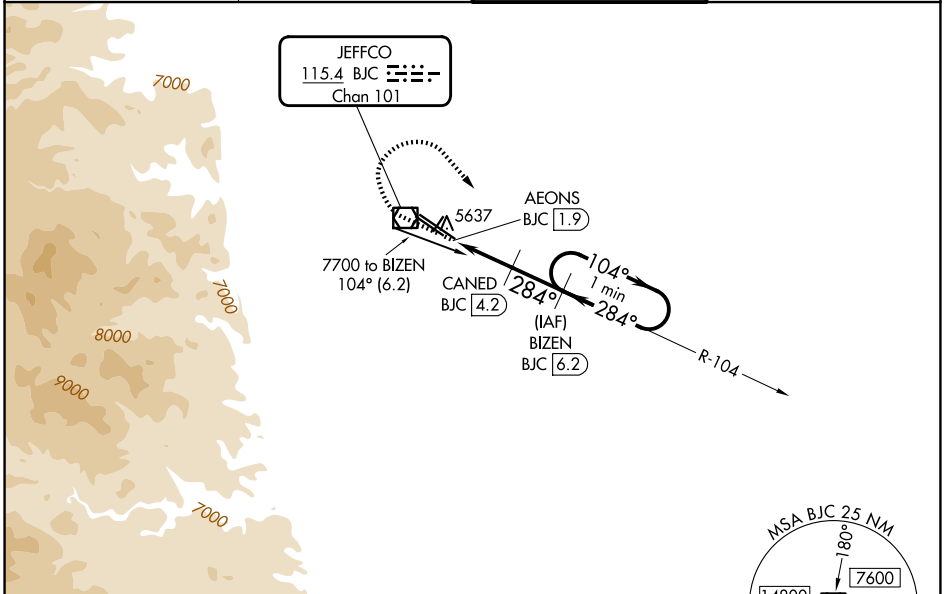
ROCKY MOUNTAIN METRO (BJC)

**NA** When local altimeter setting not received, use Denver Intl altimeter setting and increase all MDA 100 feet. Increase S-30L Cats C/D visibility to 1 mile and Circling Cat C to 2¼ mile. For inoperative MALSRS, increase S-30R all Cats visibility to 1 mile. For inoperative MALSRS, when using Denver Intl altimeter setting, increase S-30R Cats C/D visibility to 1½ mile.

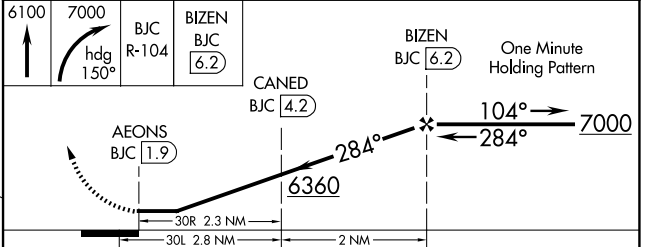
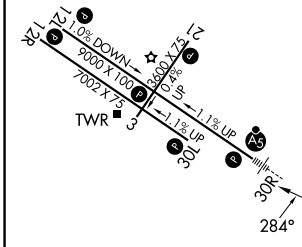
MALSRS  
Rwy 30R

**MISSED APPROACH:** Climb to 6100 then climbing right turn to 7000 on heading 150° and on BJC VOR/DME R-104 to BIZEN/BJC 6.2 DME and hold.

|                       |  |   |                         |
|-----------------------|--|---|-------------------------|
| ATIS<br><b>126.25</b> | DENVER APP CON<br><b>125.125 263.025</b> | METRO TOWER*<br><b>118.6 (CTAF) 233.7</b> | GND CON<br><b>121.7</b> |
|-----------------------|--|---|-------------------------|



|                  |                               |
|------------------|-------------------------------|
| ELEV <b>5673</b> | <b>D</b> TDZE 30L <b>5628</b> |
|                  | TDZE 30R <b>5599</b>          |



| CATEGORY | A                     | B                     | C                     | D                       |
|----------|-----------------------|-----------------------|-----------------------|-------------------------|
| S-30R    | 5920-½                | 321 (300-½)           | 5920-¾                | 321 (300-¾)             |
| S-30L    | 5920-1                | 292 (300-1)           | 5920-7/8              | 292 (300-7/8)           |
| CIRCLING | 6180-1<br>507 (600-1) | 6240-1<br>567 (600-1) | 6360-2<br>687 (700-2) | 6860-3<br>1187 (1200-3) |

HIRL Rwy 12L-30R **L**  
MIRL Rwy 3-21 and 12R-30L **L**  
REL Rwy 12L, 12R and 30L **L**

SW-1, 16 APR 2026 to 14 MAY 2026

SW-1, 16 APR 2026 to 14 MAY 2026