

(WNGSS1 . WNGSS) 26022

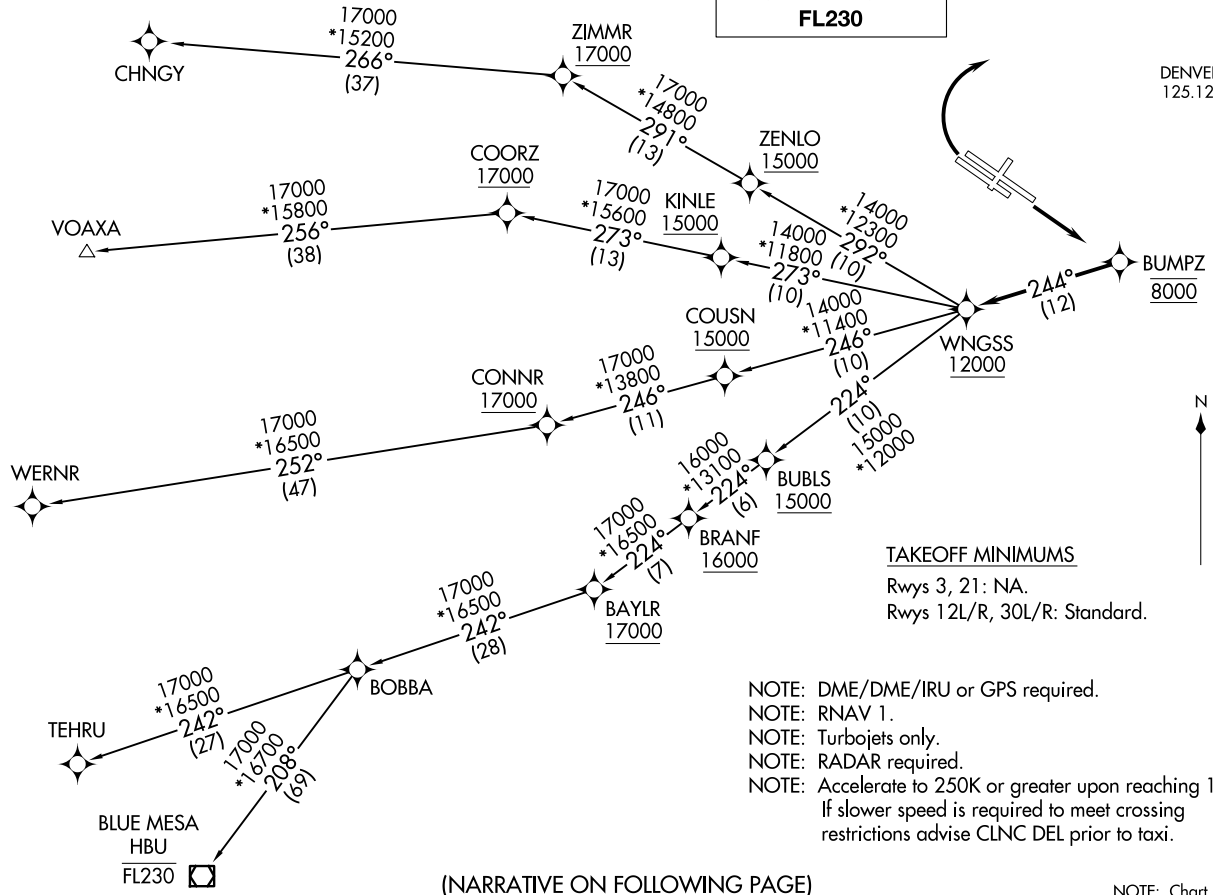
WNGSS ONE DEPARTURE (RNAV)

AL-5612 (FAA)

ROCKY MOUNTAIN METRO (B/C)
DENVER, COLORADO

ATIS
126.25
CLNC DEL
132.6
DENVER DEP CON
125.125 263.025

**TOP ALTITUDE:
FL230**



(NARRATIVE ON FOLLOWING PAGE)

NOTE: Chart not to scale.

WNGSS ONE DEPARTURE (RNAV)
(WNGSS1 . WNGSS) 26MAR20

DENVER, COLORADO
ROCKY MOUNTAIN METRO (B/C)



DEPARTURE ROUTE DESCRIPTION

TAKEOFF RUNWAYS 12L/R: Climb on a heading between 350° CW 150° as assigned by ATC. Thence. . . .

TAKEOFF RUNWAYS 30L/R: Climbing right turn on a heading between 350° CW 113° as assigned by ATC. Thence. . . .

. . . .expect RADAR vectors to cross BUMPZ at 8000 then on track 244° to cross WNGSS at or above 12000 then on (transition) maintain FL230 or filed lower altitude. Expect higher filed altitude ten minutes after departure.

BLUE MESA TRANSITION (WNGSS1.HBU)

CHNGY TRANSITION (WNGSS1.CHNGY)

TEHRU TRANSITION (WNGSS1.TEHRU)

VOAXA TRANSITION (WNGSS1.VOAXA)

WERNR TRANSITION (WNGSS1.WERNR)

SW-1, 16 APR 2026 to 14 MAY 2026

SW-1, 16 APR 2026 to 14 MAY 2026