

APP CRS	Rwy Ldg	5001
095°	TDZE	684
	Apt Elev	684

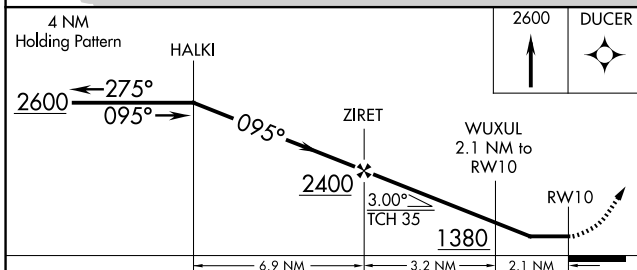
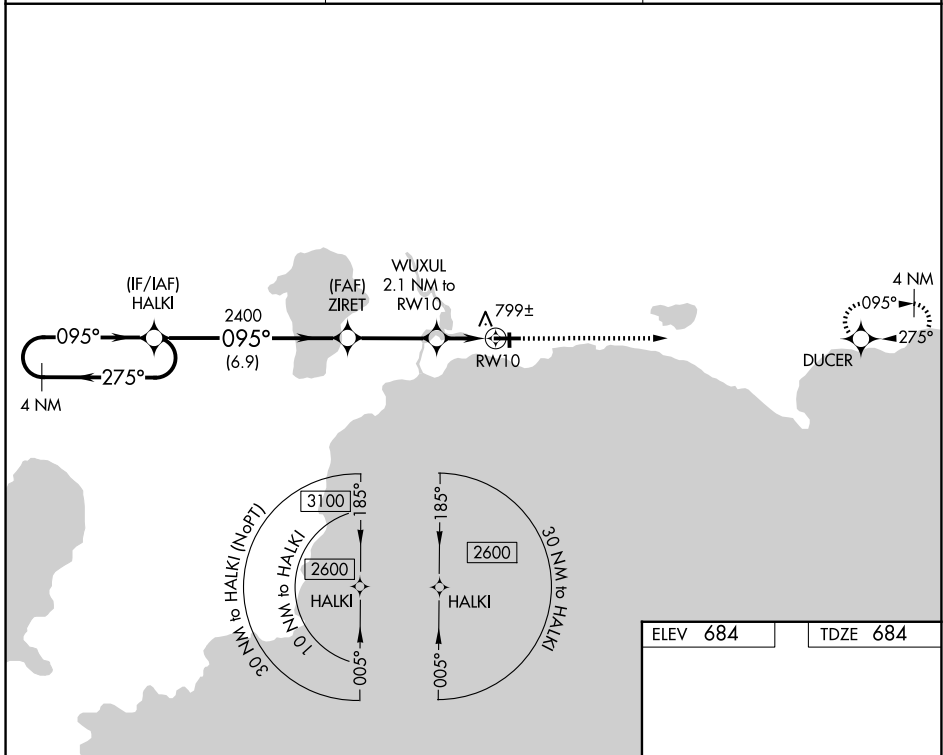
RNAV (GPS) RWY 10

SCHOOLCRAFT COUNTY (ISQ)

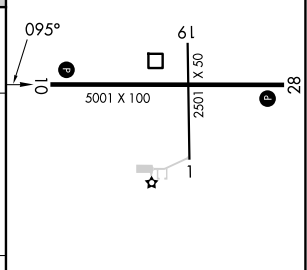
⚠ DME/DME RNP-0.3 NA. Helicopter visibility reduction below 1 SM NA. When local altimeter setting not received, use Beaver Island altimeter setting and increase all MDA 80 feet, increase LNAV Cat C and D visibility $\frac{3}{8}$ SM, Circling Cat C visibility $\frac{1}{2}$ SM and Circling Cat D visibility $\frac{1}{4}$ SM. When VGSI inop, Straight-In/Circling Rwy 10 procedure NA at night. Night landing: Rwy 1, 19 NA.

⚠ MISSED APPROACH: Climb to 2600 direct DUCER and hold.

AWOS-3P 118.775	MINNEAPOLIS APP CON 134.6 354.05	UNICOM 122.8 (CTAF) ①
---------------------------	--------------------------------------------	---------------------------------



ELEV 684	TDZE 684
----------	----------



CATEGORY	A	B	C	D
LNAV MDA	1060-1 376 (400-1)			
CIRCLING	1120-1 436 (500-1)	1140-1 456 (500-1)	1280-1½ 596 (600-1½)	1300-2 616 (700-2)

REIL Rwy 28 ①
MRL Rwy 10-28 ①

EC-1, 16 APR 2026 to 14 MAY 2026

EC-1, 16 APR 2026 to 14 MAY 2026