

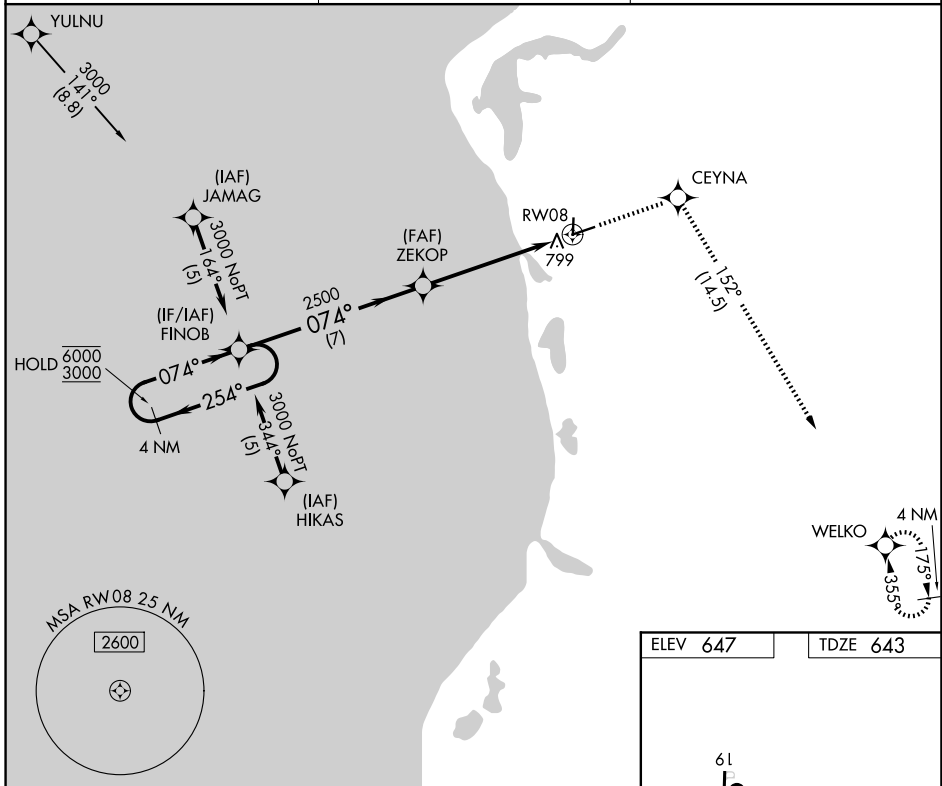
APP CRS	Rwy Ldg	<b>5003</b>
<b>074°</b>	TDZE	<b>643</b>
	Apt Elev	<b>647</b>

# RNAV (GPS) RWY 8

MASON COUNTY (LDM)

RNP APCH-GPS.	MISSED APPROACH: Climb to 3000 direct CEYNA and on track 152° to WELKO and hold.
<p>▼ Circling Rwy 1, 19 NA at night.</p> <p>▲ Rwy 8 helicopter visibility reduction below ¾ SM NA.</p>	

AWOS-3P <b>119.925</b>	MINNEAPOLIS CENTER <b>120.85 322.35</b>	UNICOM <b>123.0 (CTAF) 0</b>
---------------------------	--	---------------------------------



EC-1, 16 APR 2026 to 14 MAY 2026

EC-1, 16 APR 2026 to 14 MAY 2026

ELEV <b>647</b>	TDZE <b>643</b>
-----------------	-----------------

Detailed diagram of the final approach segment. It shows the path from CEYNA to RWY 8. Key altitudes include 3603 X 75 and 5003 X 75. The distance from CEYNA to RWY 8 is 1.5 NM. The final approach angle is 074°. The diagram also shows the runway layout and the location of RWY 26 and RWYs 8-26 and 1-19.

4 NM Holding Pattern	Visual Segment - Obstacles.	3000	CEYNA	tr 152°	WELKO
<p>6000 ← 254°</p> <p>3000 ← 074°</p>	<p>FINOB</p> <p>ZEKOP</p> <p>1.5 NM to RWY 8</p> <p>RWY 8</p>				
		7 NM	4.2 NM	1.5	
CATEGORY	A	B	C	D	
RNAV MDA	1140-1	497 (500-1)	1140-1 3/8	497 (500-1 3/8)	
CIRCLING	1160-1 513 (600-1)	1200-1 553 (600-1)	1260-1 3/4 613 (700-1 3/4)	1460-2 3/4 813 (900-2 3/4)	