

WAAS CH 97499 W18A	APP CRS 181°	Rwy Ldg TDZE 331 Apt Elev 331	5008
--	------------------------	---	-------------

RNAV (GPS) RWY 18

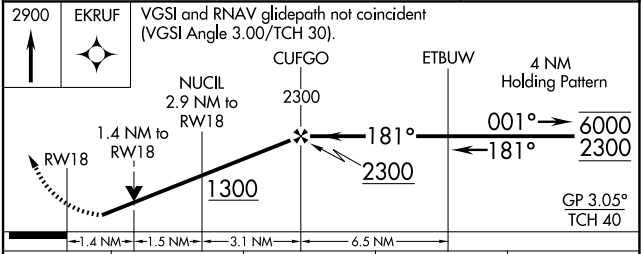
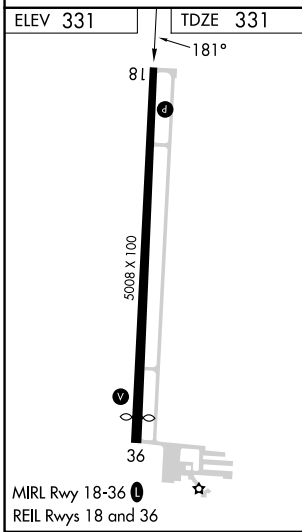
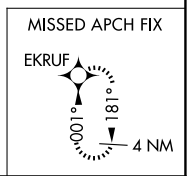
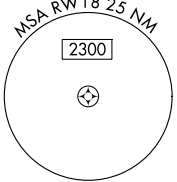
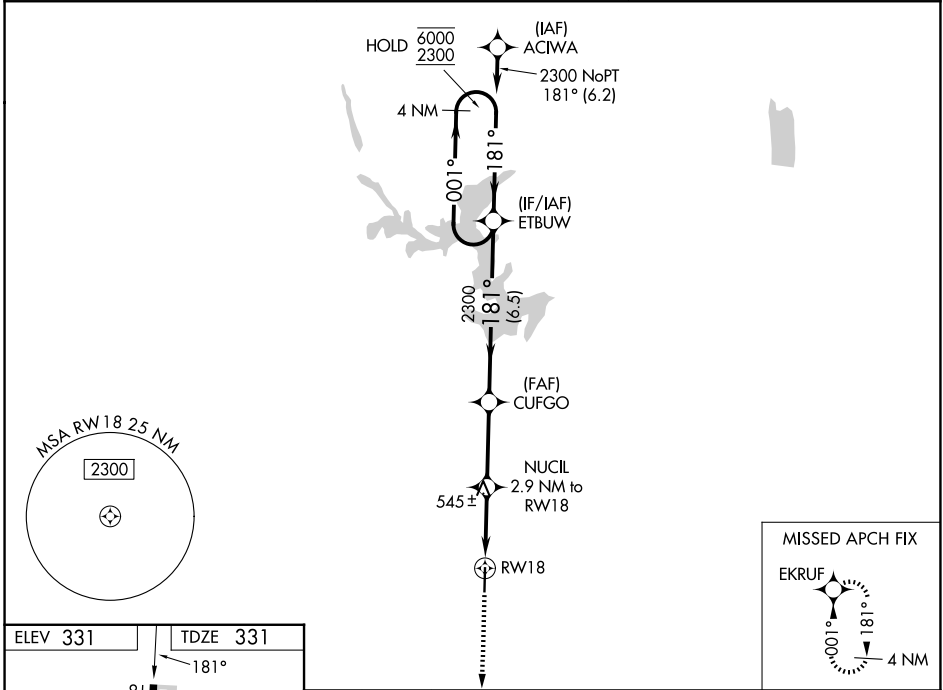
POPLAR BLUFF RGNL BUSINESS (POI^F)

RNP APCH - GPS.

⚠ Rwy 18 helicopter visibility reduction below ¾ SM NA. For uncompensated Baro-VNAV systems, LNAV/VNAV NA below -1.5°C or above 54°C.

MISSED APPROACH: Climb to 2900 direct EKRUF and hold.

ASOS 124.225	MEMPHIS CENTER 120.075 289.4	UNICOM 123.0 (CTAF) 0
------------------------	--	---------------------------------



CATEGORY	A	B	C	D
LPV DA	634-7/8		303 (400-7/8)	
LNAV/VNAV DA	768-1 1/4		437 (500-1 1/4)	
LNAV MDA	800-1 469 (500-1)		800-1 3/8 469 (500-1 3/8)	
CIRCLING	840-1 509 (600-1)	920-1 589 (600-1)	920-1 1/2 589 (600-1 1/2)	980-2 649 (700-2)

NC-3, 16 APR 2026 to 14 MAY 2026

NC-3, 16 APR 2026 to 14 MAY 2026