

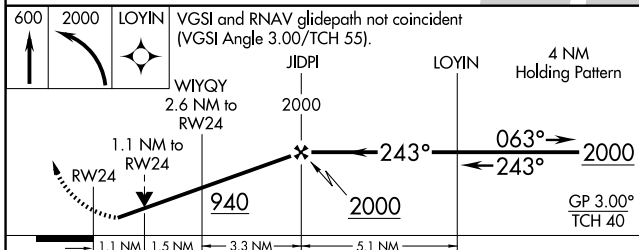
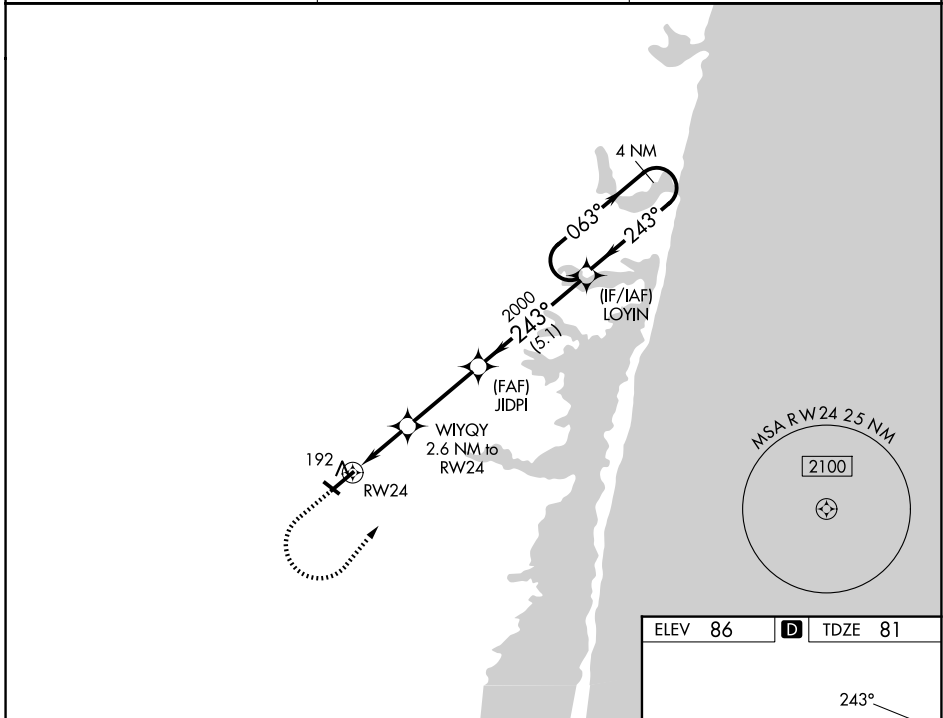
WAAS CH <b>86433</b> <b>W24A</b>	APP CRS <b>243°</b>	Rwy Ldg TDZE Apt Elev	<b>5835</b> <b>81</b> <b>86</b>
--	------------------------	-----------------------------	---------------------------------------

# RNAV (GPS) RWY 24

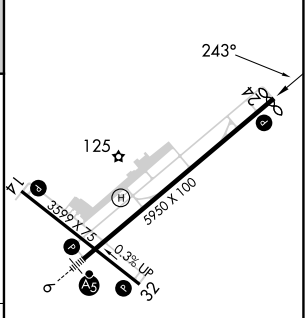
OCEAN COUNTY (MJX)

RNP APCH - GPS.	MISSED APPROACH: Climb to 600 then climbing left turn to 2000 direct to LOYIN and hold.
-----------------	---

AWOS-3PT <b>119.875</b>	MC GUIRE APP CON <b>126.475 363.8</b>	UNICOM <b>122.7 (CTAF)</b>
----------------------------	--	-------------------------------



ELEV 86	<b>D</b>	TDZE 81
---------	----------	---------



CATEGORY	A	B	C	D
LPV DA		331-3/4	250 (300-3/4)	
LNAV/VNAV DA		358-7/8	277 (300-7/8)	
LNAV MDA		460-1	379 (400-1)	
CIRCLING	540-1	560-1	580-1 1/2	700-2
	454 (500-1)	474 (500-1)	494 (500-1 1/2)	614 (700-2)

MIRL Rwy 14-32 **L**  
 HIRL Rwy 6-24 **L**  
 REIL Rwy 14, 24 and 32 **L**

NE-2, 16 APR 2026 to 14 MAY 2026

NE-2, 16 APR 2026 to 14 MAY 2026