

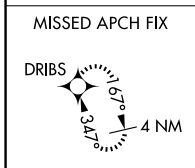
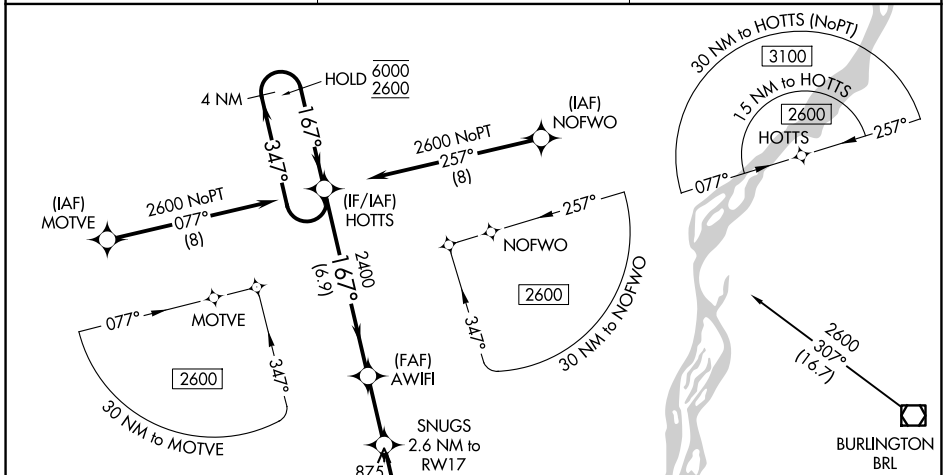
WAAS CH 82641 W17A	APP CRS 167°	Rwy Ldg TDZE Apt Elev	4000 722 722
--	------------------------	-----------------------------	---

RNAV (GPS) RWY 17

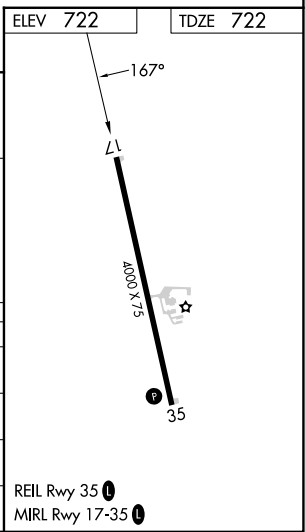
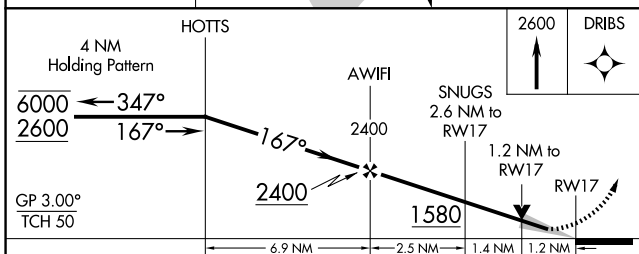
FORT MADISON MUNI (F'SW)

RNP APCH - GPS.	<p>MISSED APPROACH: Climb to 2600 direct DRIBS and hold.</p>
<p>⚠ For uncompensated Baro-VNAV systems, LNAV/VNAV NA below -16°C or above 54°C. Baro-VNAV and VDP NA when using BRL altimeter setting. When local altimeter setting not received, use BRL altimeter setting; increase LPV DA to 1004 feet; increase LNAV/VNAV DA to 1004 feet; increase all MDAs 40 feet and LNAV visibility Cats C and D ¼ SM, and Circling visibility Cat D ¼ SM.</p>	

AWOS-3 120.925	CHICAGO CENTER 135.6 316.1	UNICOM 122.8 (CTAF) 📻
--------------------------	--------------------------------------	--



Procedure NA for arrival on BRL VOR/DME airway radials 241 CW 015.



CATEGORY	A	B	C	D
LPV DA	972-1		250 (300-1)	
LNAV/VNAV DA	972-1		250 (300-1)	
LNAV MDA	1140-1	418 (500-1)	1140-1½	418 (500-1½)
CIRCLING	1200-1		1260-1½	1500-2½
			538 (600-1½)	778 (800-2½)

NC-3, 16 APR 2026 to 14 MAY 2026

NC-3, 16 APR 2026 to 14 MAY 2026