

VOR/DME BRL <b>115.55</b> Chan <b>102(Y)</b>	APP CRS <b>253°</b>	Rwy Ldg TDZE Apt Elev	<b>N/A</b> <b>N/A</b> <b>722</b>
--	------------------------	-----------------------------	--

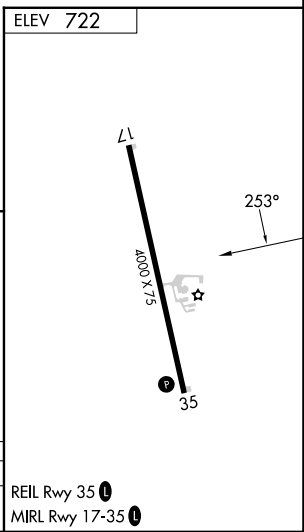
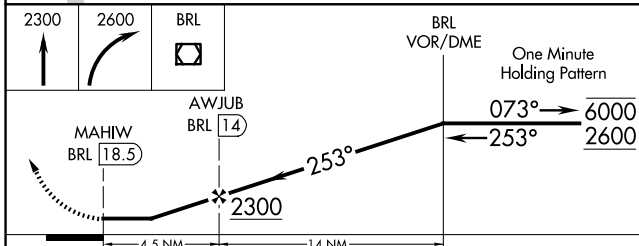
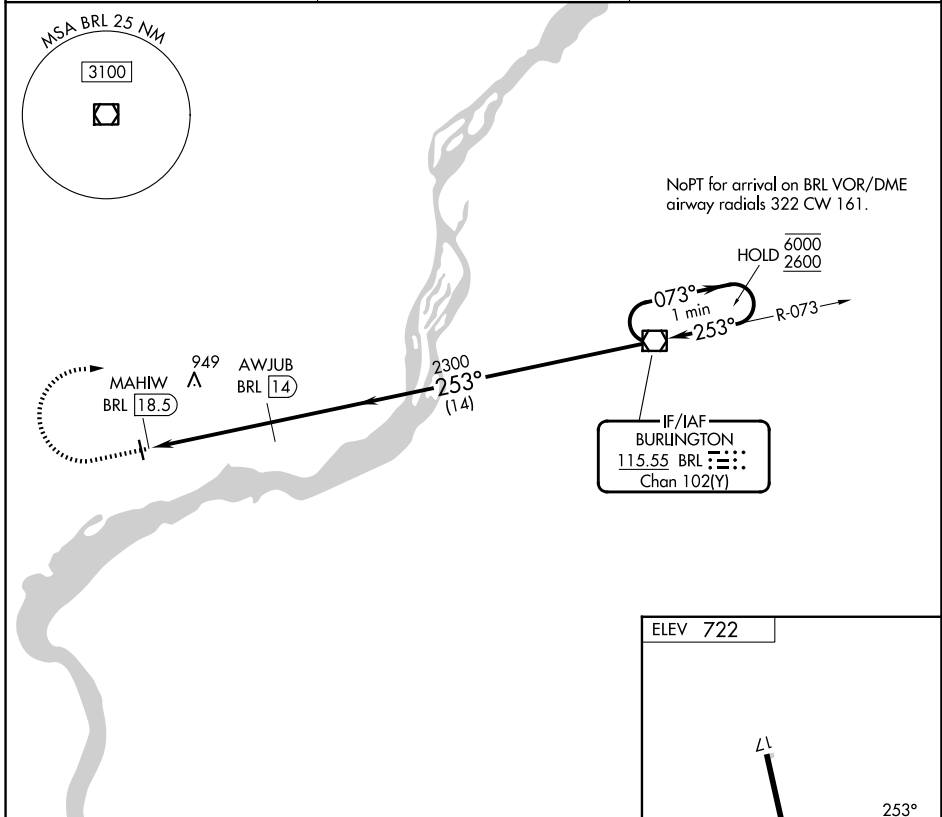
**VOR-A**  
FORT MADISON MUNI (F'SW)

DME required.

⚠ Visibility reduction by helicopters NA. When local altimeter not received, use BRL altimeter setting and increase all MDAs 40 feet and Circling visibility Cat D ¼ SM.

MISSED APPROACH: Climb to 2300 then climbing right turn to 2600 direct BRL VOR/DME and hold.

AWOS-3 <b>120.925</b>	CHICAGO CENTER <b>135.6 316.1</b>	UNICOM <b>122.8 (CTAF) 0</b>
--------------------------	--------------------------------------	---------------------------------



CATEGORY	A	B	C	D
CIRCLING	1220-1	498 (500-1)	1260-1½ 538 (600-1½)	1500-2½ 778 (800-2½)

REIL Rwy 35 0  
MRL Rwy 17-35 0

NC-3, 16 APR 2026 to 14 MAY 2026

NC-3, 16 APR 2026 to 14 MAY 2026