

LOC I-MMV 110.9	APP CRS 218°	Rwy Idg 5420
		TDZE 161
		Apt Elev 163

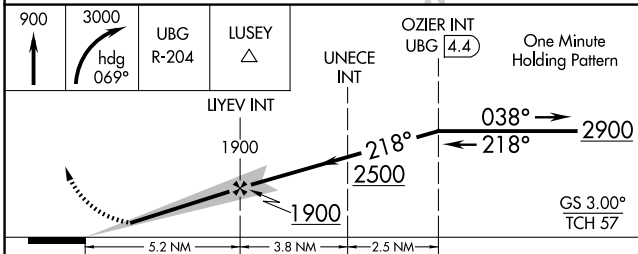
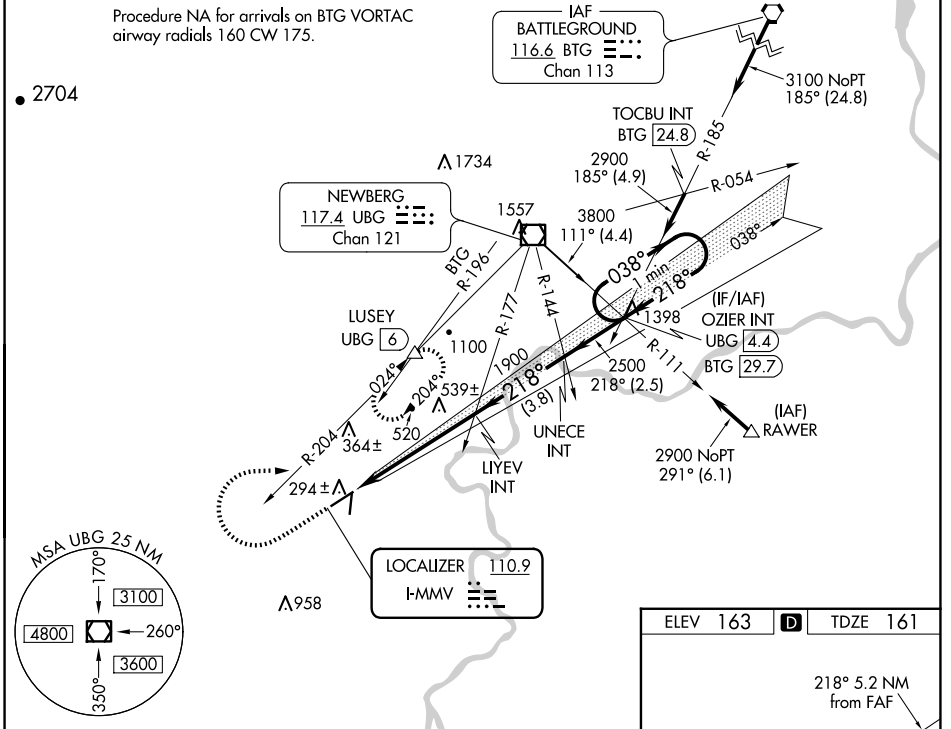
ILS or LOC RWY 22

MC MINNVILLE MUNI (MMV)

⚠ DME required. When local altimeter setting not received, use Aurora State altimeter setting: increase all DA to 403 feet; increase all MDA 60 feet and S-LOC 22 all Cats and Circling Cat C visibility 1/4 SM.

MALS
MISSED APPROACH: Climb to 900 then climbing right turn to 3000 via heading 069° and UBG VOR/DME R-204 to LUSEY/UBG VOR/DME 6 DME and hold, continue climb-in-hold to 3000.

ASOS 135.675	PORTLAND APP CON 126.0 284.6 (NORTH)	SEATTLE CENTER 125.8 291.7 (SOUTH)	CLNC DEL 118.35	UNICOM 123.0 (CTAF) 0
------------------------	--	--	---------------------------	--



ELEV 163	D	TDZE 161
----------	----------	----------

REIL Rwy 4 0	
HIRL Rwy 4-22 0	
FAF to MAP 5.2 NM	
Knots	60 90 120 150 180
Min:Sec	5:12 3:28 2:36 2:05 1:44

CATEGORY	A	B	C	D
S-ILS 22		361-1/2	200 (200-1/2)	
S-LOC 22	600-1/2	439 (500-1/2)	600-3/4 439 (500-3/4)	600-1 439 (500-1)
CIRCLING	660-1 497 (500-1)	840-1 677 (700-1)	920-2 1/4 757 (800-2 1/4)	1320-3 1157 (1200-3)

NW-1, 16 APR 2026 to 14 MAY 2026

NW-1, 16 APR 2026 to 14 MAY 2026