

WAAS CH <b>50309</b> <b>W22A</b>	APP CRS <b>218°</b>	Rwy Idg TDZE Apt Elev	<b>5420</b> <b>161</b> <b>163</b>
--	------------------------	-----------------------------	---

# RNAV (GPS) RWY 22

MC MINNVILLE MUNI (MMV)

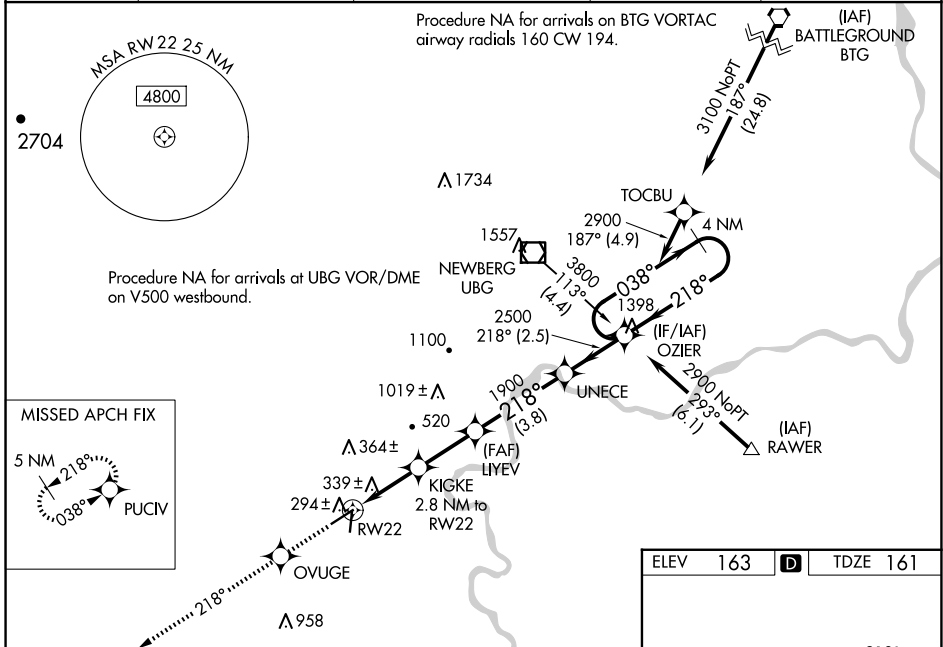
**RNP APCH.**

▼ Baro-VNAV NA when using Aurora State altimeter setting. For uncompensated Baro-VNAV systems, LNAV/VNAV NA below -15°C or above 48°C. When local altimeter setting not received, use Aurora State altimeter setting; increase LPV DA to 534 feet, LNAV/VNAV DA to 703 feet; increase all MDAs 60 feet and visibility LNAV Cats C and D ½ SM. For inop ALS, increase LPV all Cats visibility to ¾ SM, LNAV/VNAV all Cats to 1 ½ SM, LNAV Cat A/B to 1 SM and Cat C/D to 1 ½ SM. For inop ALS when using Aurora State altimeter setting, increase LNAV/VNAV all Cats visibility to 1 ½ SM, LNAV Cat A/B to 1 SM and Cat C/D to 1 ½ SM. VDP NA when using Aurora State altimeter setting.

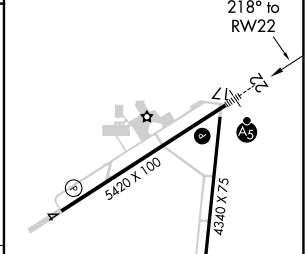
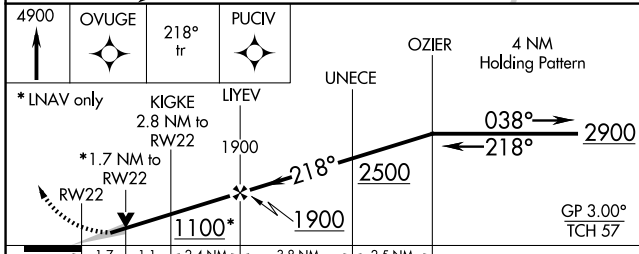
**MALSR**  
AS

**MISSED APPROACH:**  
Climb to 4900 direct OVUGE then on 218° track to PUCIV and hold, continue climb-in-hold to 4900.

ASOS <b>135.675</b>	PORTLAND APP CON <b>126.0 284.6</b> (NORTH)	SEATTLE CENTER <b>125.8 291.7</b> (SOUTH)	CLNC DEL <b>118.35</b>	UNICOM <b>123.0</b> (CTAF) <b>1</b>
------------------------	--	--	---------------------------	--



ELEV 163	<b>D</b>	TDZE 161
----------	----------	----------



CATEGORY	A	B	C	D
LPV DA	474-¾ 313 (400-¾)			
LNAV/VNAV DA	643-1¼ 482 (500-1¼)			
LNAV MDA	740-¾ 579 (600-¾)		740-1¼ 579 (600-1¼)	

REIL Rwy 4 **1**

HIRL Rwy 4-22 **1**

NW-1, 16 APR 2026 to 14 MAY 2026

NW-1, 16 APR 2026 to 14 MAY 2026