

WAAS CH <b>86801</b> <b>W03A</b>	APP CRS <b>026°</b>	Rwy Ldg TDZE <b>315</b> Apt Elev <b>315</b>
--	------------------------	---

# RNAV (GPS) RWY 3

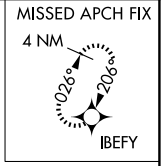
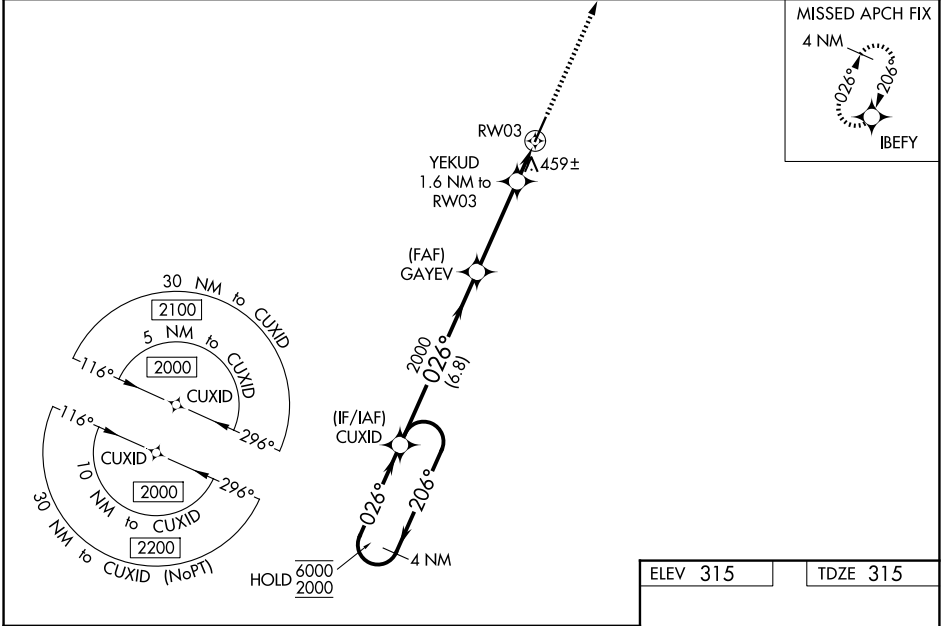
SIKESTON MEML MUNI (SIK)

RNP APCH.

**▽** Rwy 3 helicopter visibility reduction below 3/4 SM NA. Baro-VNAV NA when using Cape Girardeau altimeter setting. For uncompensated Baro-VNAV systems, procedure NA below -15°C or above 54°C. When local altimeter setting not received, use Cape Girardeau altimeter setting and increase all DA 49 feet and all MDA 60 feet. Increase LNAV and Circling Cat C/D visibility 1/4 SM.

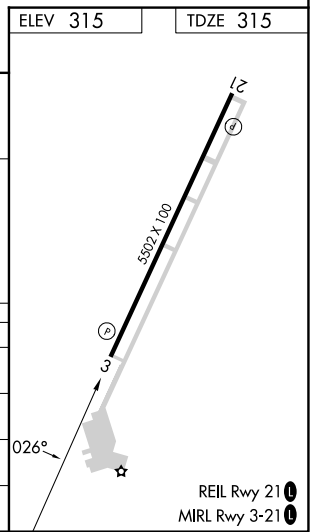
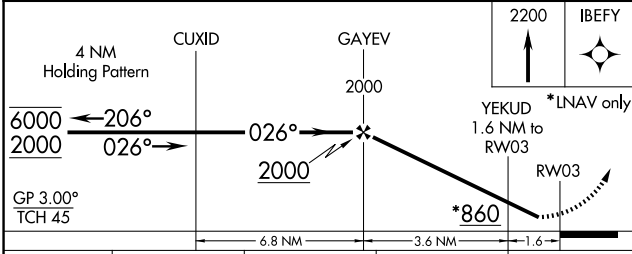
**△** NA MISSED APPROACH: Climb to 2200 direct IBEFY and hold.

AWOS-3 <b>119.175</b>	MEMPHIS CENTER <b>133.65 292.15</b>	UNICOM <b>122.8 (CTAF)</b>
--------------------------	--	-------------------------------



NC-3, 16 APR 2026 to 14 MAY 2026

NC-3, 16 APR 2026 to 14 MAY 2026



CATEGORY	A	B	C	D
LPV DA	629-1 314 (400-1)			
LNAV/VNAV DA	769-1 3/8 454 (500-1 3/8)			
LNAV MDA	720-1	405 (500-1)	720-1 1/8	405 (500-1 1/8)
CIRCLING	840-1 525 (600-1)	860-1 545 (600-1)	1080-2 1/4 765 (800-2 1/4)	1160-2 3/4 845 (900-2 3/4)